

Waterlodge Waterlodge Two



Year:	2022	Heads:	1
Location:	Southampton	Cabins:	1
LOA:	36' 0" (10.97m)	Berths:	0
Beam:	14' 0" (4.27m)	Keel:	
Draft:		Engines:	0

Remarks:

Waterlodge Two brings 26 sq m of internal living space, with generous one or two bedroom space, storage/utility room and up to 32 sq m of outdoor living and entertainment space. An optional sofa bed in the lounge means she will sleep up to six people in comfort. Ideal for families with space for overnight guests. Various locations are available please call to discuss.

£109,950 Tax Not Paid

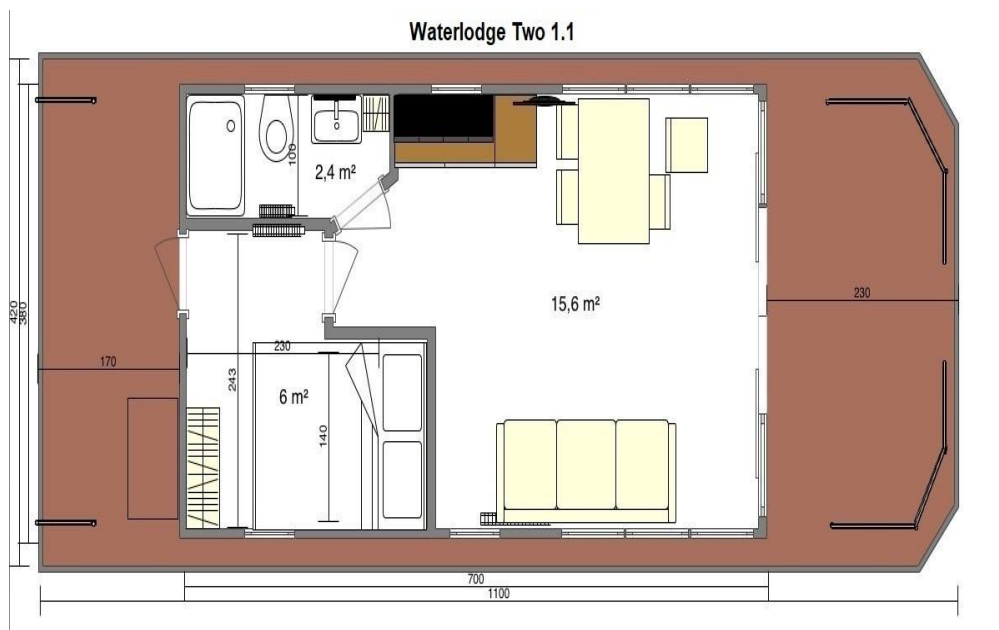
E: hamble@boatpoint.co.uk **T:** 02382 120000

www.networkyachtbrokers.com | over 700 boats listed

REF: 66F6984573

WATERLODGE

FLOATING APARTMENTS



Mechanical and Rigging

Inventory

Accommodation

The Concept

Waterlodge is a range of contemporary & iconic floating homes, built with design flair and quality fittings.

They're designed to look good in any location where there's enough water to float.

Multi-purpose design means they work as city-centre studio flats, family or retirement luxury apartments.

Standard Equipment

Galvanised Steel Sub Frame
Foam filled Polyethylene Floats
External cladding in timber or PVC
460 litre fresh water and black water tanks
Box for two gas cylinders or external storage
Gas or electric central heating installation
Timber decking
Stainless Steel railings around lower decks
5 cm foam insulation
Interior LED lighting throughout
Bathroom
Shower, Basin, Electric WC, heated towel rail
Mirror, Extractor
Kitchen
Gas or Electric Hob, Fridge and Sink
Double glazed windows and doors
Stainless Steel Mooring Cleats x 4
Stainless Steel boarding ladder

Optional Extras

Off grid power pack
5000W Inverter
2x240ah 12 batteries
Two 270W solar panels

Roof terrace with railings and stairs
Upgrade to marine grade stainless railings
Outside LED lights
Two full height side windows
Opening portholes
Rubber fendering
Upgrade to 7.5cm foam insulation
Under floor heating in living room
Curtains for patio doors

Blinds for side windows
Flexi teak flooring on roof terrace
Under floor storage box (470 cubic litres)
Forward deck canopy enclosure
Living Room Furniture Pack
Sofa bed
Dining table with 4 chairs
Coffee table
Bedroom Furniture Pack
Double bed
Built in Combination microwave/oven
Air conditioning
Radio with 2 speakers
Two outside speakers
32' TV with antenna
Freshwater connection
Two additional floor sockets
Dimmer for LED lights in living room
Remote control for heating
Bedroom reading lights
Hot Tub
TracVision Marine satellite TV system

Disclaimer

The Company offers the details of this vessel in good faith but cannot guarantee or warrant the accuracy of this information nor warrant the condition of the vessel. A buyer should instruct his agents, or his surveyors, to investigate such details as the buyer desires validated. This vessel is offered subject to prior sale, price change, or withdrawal without notice.

Remarks :

Waterlodge Two brings 26 sq m of internal living space, with generous one or two bedroom space, storage/utility room and up to 32 sq m of outdoor living and entertainment space. An optional sofa bed in the lounge means she will sleep up to six people in comfort. Ideal for families with space for overnight guests.

Various locations are available please call to discuss.

Contact: NYB Hamble Deacons Marina Bridge Road Bursledon Southampton SO31 8AZ

Tel: 02382 120000

Email: hamble@boatpoint.co.uk