

Shipman 28



YEAR 1974 | €9950 | VAT PAID | CORK OFFICE



Summary

Manufacturer: Shipman 28

Price: €9950

Location: Cork

Year: 1974

ID no.: 5661

DIMENSIONS

- **LOA:** 28' 10" (8.80m)
- **Beam:** 8' 6" (2.60m)
- **Draft:** 5' 1" (1.55m)
- **Keel:** Fin Keel

ACCOMMODATION

- **Berths:** 6
- **Cabins:** 0
- **Heads:** 1
- **Showers:** 0

PERFORMANCE

- **Top Speed:** 6 knots
- **Cruising Speed:** 5 knots

TANKAGE

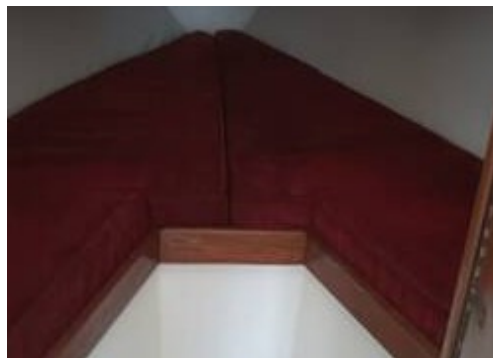
- **Fuel:** Diesel
- **Fuel Tank Size:** 70 Litres
- **Water Tank Size:** 80 Litres

MACHINERY

- **Engine Make:** Beta
- **Horsepower:** 20
- **Drive Type:** Shaft drive

OTHERS

- **Aircon:**
- **Heating:**



Shipman 28

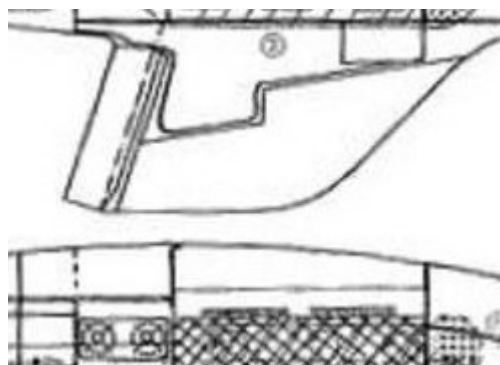
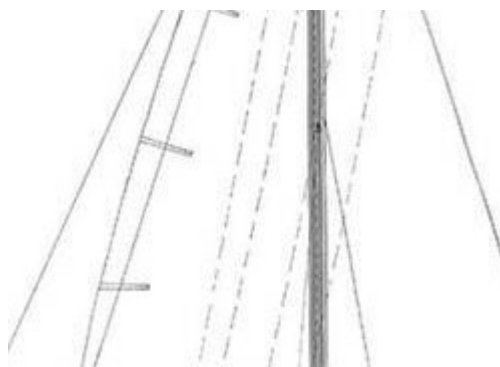
Broker Remarks

This 1974 Shipman 28, is in good condition for her year. Her inventory includes a (2011) 20HP "Beta" diesel engine with only 65 running hours, six berths, two mainsails, genoa, working jib, Navman Chart-plotter, depth, log, yard trailer and more. She is a fine cruising boat with nice lines and is excellent value. Viewing recommended.



Mechanical and Rigging

2011 Beta 20hp with only 65 running hours



Construction

GRP. Hull and deck

Fin keel, with a skeg hung rudder with tiller.

Navy blue topsides with teak capping

Rig and Sails

Bermudan sloop

Deck stepped aluminium mast with a single set of spreaders

Mainsheet track in the cockpit

2 x Mainsails in good condition

Genoa with hanks in good condition

Working jib with hanks in good condition

Mainsail cover

On Deck

Tiller with tiller extension

2 x Genoa sheet winches in the cockpit

Pulpit, pushpit, stanchions and guardrails

2 x Anchors with chain and warp

Stainless steel stem-head fitting with bow roller

Mooring cleats fore and aft

Fenders and mooring lines,

Outboard bracket on the pushpit

Cockpit lockers

Numerous grab rails

Accommodation

Saloon with a settee berth to port and dinette to starboard. Saloon table can convert to a double berth.

Quarter berth to starboard aft.

Sink, portable single burner gas cooker on gimbals and storage lockers in the galley.

Jabsco Marine toilet is located between the main saloon and fore cabin to starboard with a slide out wash hand basin.

The forward cabin has a V berth with storage space and opening deck hatch.

Plenty of storage space throughout.

Electrics and Navigation

12V. Engine Battery

12V. Services Battery

2 x Solar panels

Electric distribution panel with switches

Bulkhead Compass

Navman Tracker Chart-plotter

Clipper Duet (Depth and Speed)

Simrad Tiller-Pilot

Radar reflector

Safety

Horseshoe Buoy

Electric bilge pump and Manual bilge pump

Fire Extinguisher

Boat hook

Other

Yard trailer (requires some attention)

3 x blade fixed propeller

Owner's Comments

This boat has had light use in my ownership for about 14 years and has been well minded.

Broker's Comments

She is a nice cruiser and has the potential

to race around the cans too.

Disclaimer

The Company offers the details of this vessel in good faith but cannot guarantee or warrant the accuracy of this information nor warrant the condition of the vessel. A buyer should instruct his agents, or his surveyors, to investigate such details as the buyer desires validated. This vessel is offered subject to prior sale, price change, or withdrawal without notice.

Contact

CORK OFFICE

Address:

Network Yacht Brokers Cork Crosshaven Boatyard Crosshaven Co. Cork Ireland

Telephone: +353 (0)21 4831161

Email: hugh@crosshavenboatyard.com

Disclaimer : The company offers the details of this vessel for sale but cannot guarantee or warrant the accuracy of the information contained in the specification or warrant the condition of the vessel or equipment. A buyer should instruct his agents, or surveyors, to investigate such details as the buyer desires validated. This vessel is offered for sale subject to no prior sale, price change, or withdrawal without notice.

