

Westerly Centaur 26

YEAR 1979 | €11000 | CORK OFFICE



Summary

Manufacturer: Westerly Centaur 26

Price: €11000

Location: Cork OFFICE

Year: 1979

ID no.: 5644

DIMENSIONS

- **LOA:** 26' 0" (7.92m)
- **Beam:** 8' 5" (2.57m)
- **Draft:** 3' 0" (0.91m)
- **Keel:** Twin Keel

ACCOMMODATION

- **Berths:** 0
- **Cabins:** 0
- **Heads:** 0
- **Showers:** 0

PERFORMANCE

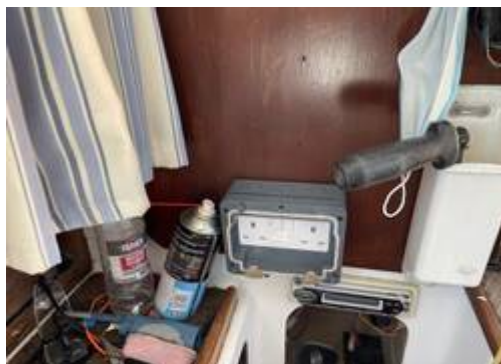
- **Top Speed:** 6
- **Cruising Speed:** 5

TANKAGE

- **Fuel:** Diesel
- **Fuel Tank Size:** 50 Litres
- **Water Tank Size:** 0

MACHINERY

- **Engine Make:** Volvo
- **Horsepower:** 18
- **Drive Type:** Shaft drive



Westerly Centaur 26

Broker Remarks

This 1979 Westerly Centaur 26 (bilge keels) comes with 4 berths, 1998 Volvo 18hp diesel engine (looks good), 1998 "Selden" mast and boom, in-mast furling mainsail, furling genoa, 2013 standing rigging, cooker, marine toilet, chart-plotter/GPS, DSC VHF, sprayhood, cockpit cushions and more. Viewing recommended.



Mechanical and Rigging

Volvo 2002 Series



Construction

Hull Number K2338

The hull is built in solid GRP. The foredeck is of balsa sandwich to give added strength.

The Westerly Centaur is the twin keel version of the Westerly Pembroke.

Rig, Sails and Winches

Bermudan sloop

1998 Selden Alloy mast with in-mast furling

Single set of spreaders

2013 Standing rigging

Selden Furling genoa system

Mainsheet track in the cockpit aft of the helm

In-mast furling mainsail in good condition

Furling Genoa in good condition

2 x Genoa sheet winches in the cockpit

2 x Winches on the coachroof

On Deck

Roomy sheltered cockpit with tiller

Anchor with chain and warp

3 x Mooring cleats

Fenders and mooring lines,

Sprayhood

A number of the lines are lead aft through clutch jammers on the coachroof

Teak slatted cockpit floor

Transom mounted boarding ladder

Accommodation

A Layout

There is a quarter berth to port and a settee berth further forward and two singles in the forward cabin that can convert to a double. Large windows on either side of the saloon which makes the saloon light and airy. The companion way steps are easily removed to give access to the engine.

Saloon table.

A separate toilet compartment and hanging locker are located between the main saloon and fore-cabin.

Opening deck hatch in the forward cabin.

The galley is to starboard and comes with a 2 x burner gas cooker with oven and grill, sink with fresh water via manual pump.

Fire blanket

Plenty of storage space throughout

Headlining is in good condition

Electrics and Navigation

2 x 12 Volt Batteries

Bulkhead Compass

Raymarine ST40 Wind (speed/angle)

2007 Garmin GPSmap 525s

Standard Horizon DSC VHF radio

Other

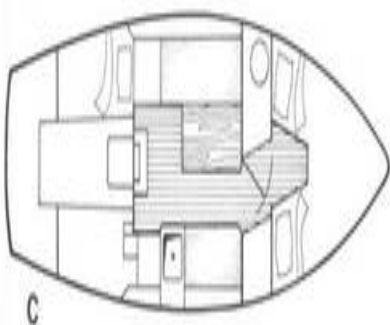
Cockpit cushions

Manual bilge pump

Winch handle

Broker's Comments

This boat is a roomy family cruiser with a deep sheltered cockpit. Her twin keels gives her the freedom to dry out easily. She is in excellent condition for her year.



Contact

CORK OFFICE

Address:

Network Yacht Brokers Cork Crosshaven Boatyard Crosshaven Co. Cork Ireland

Telephone: +353 (0)21 4831161

Email: hugh@crosshavenboatyard.com

