

# MG Morgan Giles

**YEAR 1982   |   £4500   |   KENT OFFICE**



# Summary

**Manufacturer:** MG Morgan Giles

**Price:** £4500

**Location:** Kent OFFICE

**Year:** 1982

**ID no.:** 3899

## DIMENSIONS

- **LOA:** 30' 0" (9.14m)
- **Beam:** 8' 6" (2.59m)
- **Draft:** 5' 3" (1.6m)
- **Keel:** Fin keel

## ACCOMMODATION

- **Berths:** 5
- **Cabins:** 1
- **Heads:** 1
- **Showers:** 0

## PERFORMANCE

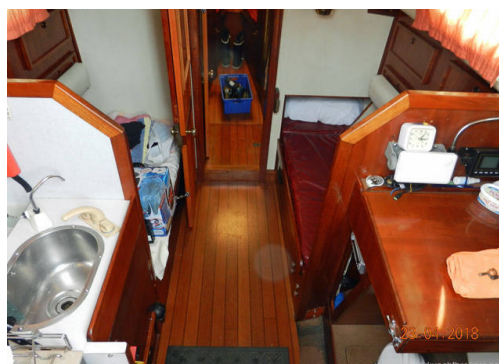
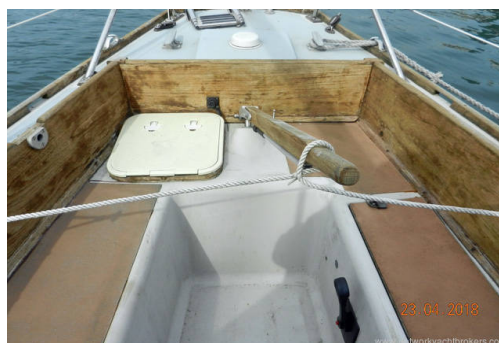
- **Top Speed:**
- **Cruising Speed:**

## TANKAGE

- **Fuel:** Diesel
- **Fuel Tank Size:** 15 Gallons
- **Water Tank Size:** 200 Litres

## MACHINERY

- **Engine Make:** Yanmar 2GM
- **Horsepower:** 10
- **Drive Type:** Shaft drive



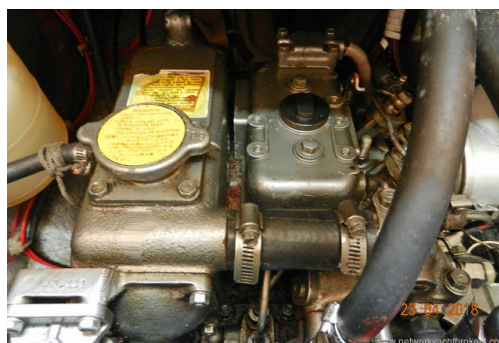


# MG Morgan Giles

## Broker Remarks

1982 MG30 Being sold by sealed BID for offers over £4,500 - Sealed Bid closes 12:00 Saturday 21st September.

This 1982 **Morgan Giles 30**, built by Samuel Plastics Limited. The boat which has had one owner from new is currently ashore and available for inspection by appointment. The **MG 30** is a well-regarded sailing yacht. It is an elegant long keeled fast cruiser, with a powerful diesel engine, superb and stiff sailing characteristics and feels safe and dry even in the worst of conditions. This **MG 30** is priced to sell due to the owner's health.



## Accommodation

Below decks, this **MG 30** is typical for her era, heavily constructed with lots of visible timber. It offers five berths in one cabin and the saloon with approx. 5' 11" maximum headroom. Forward is a V berth with infill which converts to double and has good storage with hanging locker. Between the forward cabin and saloon is the heads to port with a hand basin to starboard with hot and cold water. The saloon has two good sized settee berths and a pilot berth to starboard with under-berth storage. Two single settee berths with a teak drop-leaf saloon table.

To port is an L Shaped Galley with a work surface, single stainless-steel sink with hot and cold water. In the galley is a two burner gas cooker with grill and oven, cool box and lots of storage. Good sized chart table to Port with a panel for instruments and lots of storage space. Heated throughout by an Eberspacher diesel cabin heating system with two outlets.

Heated throughout by an Eberspacher diesel cabin heating system with two outlets. There is a large cockpit area with large storage lockers. The cockpit has lots of room to sit with tiller steering.

# Mechanical and Rigging

## Sails and Spars

Masthead Bermudan rigged sloop. Aluminium deck stepped mast and boom, Proctor 1990. Stainless steel standing rigging replaced 2010. Terylene running rigging, replaced as required, led aft to cockpit. Battened mainsail with lazy jacks and furling genoa (Rotostay). Manual backstay adjuster. Spinnaker pole. Slab reefing.

## Winches

4 x Sheet winches (Gibb 28RA)

2 x Halyard winches (Gibb 571)

1 x Other winch (Gibb 578A)

## Sails

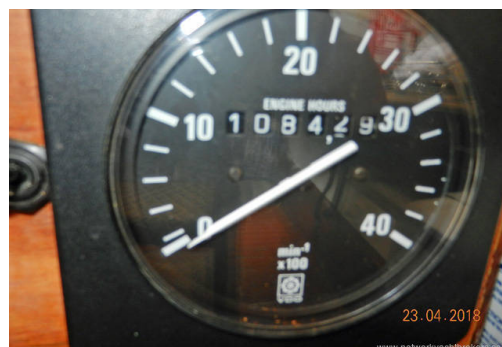
1 x Mainsail (1982 Arun fair condition last valeted 2013)

1 x Genoa (1982 Arun fair condition last valeted 2013)

1 x Spinnaker (1982 Arun fair condition last valeted 2013)

1 x Mainsail (2015 Wilkinson hardly used)

1 x Genoa (2015 Wilkinson hardly used)





### **Deck Equipment**

- 1 x Anchor (Plough 35lbs)
- Chain/Warp
- Mainsail cover
- Boom awning
- Sprayhood
- Cockpit awning
- 2 x Cockpit dodgers
- Boarding ladder
- 6 x Fenders
- Dinghy (Avon Redcrest)

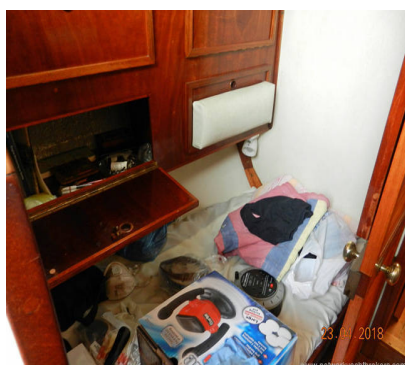
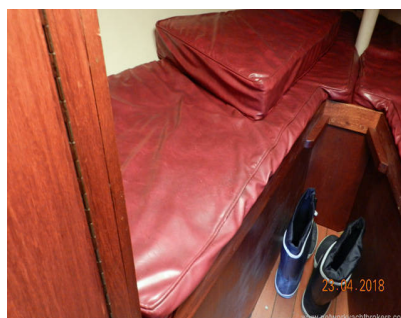
### **Navigation Equipment**

- Compass (Silva)
- Speed/Log (Navico)
- Windspeed/Direction (Navico)
- Autopilot (Navico)
- Navigation lights
- Navtex
- Paper charts
- Clock/Barometer

### **Safety Equipment**

- 2 x Fire extinguishers
- Fire blanket
- 2 x Jackstays
- 2 x Harnesses
- 4 x Lifejackets
- Deck light
- Horseshoe lifebuoy
- Liferaft (Seago 4 man)
- 2 x Bilge pumps (manual and electric)
- Radar reflector







# Contact

## Network Yacht Brokers Kent

### KENT OFFICE

**Address:**

Network Yacht Brokers Kent Chatham Maritime Marina Leviathan Way, Chatham, Kent ME4 4LP

**Telephone:** +44 (0)1634 571605

**Email:** [info@nybkent.com](mailto:info@nybkent.com)

