

Moonraker Moonraker 36

YEAR 1974 | £32,000 | KENT OFFICE



23.03.2018

Summary

Manufacturer: Moonraker Moonraker 36

Price: £32,000

Location: Kent OFFICE

Year: 1974

ID no.: 3894

DIMENSIONS

- **LOA:** 36' 0" (10.97m)
- **Beam:** 11' 6" (3.51m)
- **Draft:** 2' 4" (0.71m)
- **Keel:** Planing

ACCOMMODATION

- **Berths:** 6
- **Cabins:** 3
- **Heads:** 2
- **Showers:** 2

PERFORMANCE

- **Top Speed:**
- **Cruising Speed:**

TANKAGE

- **Fuel:** Diesel
- **Fuel Tank Size:** 0
- **Water Tank Size:** 200 Litres

MACHINERY

- **Engine Make:** Perkins Sabre
- **Horsepower:** 300
- **Drive Type:** Shaft drive



Moonraker Moonraker 36

Broker Remarks

“Proph-A’Sea” is a classic **Moonraker 36**, deservedly sought after thanks to their impressive combination of space, performance, economy and sea keeping. This is also arguably from the best build period for Moonraker, before the layout was altered and the preferred stainless-steel rails and fittings were changed on the later, lighter boats.



Accommodation

The **Moonraker 36** layout offers up to seven berths in two/three cabins with good headroom throughout and ensuite to the master cabin. **FORWARD CABIN:** Open plan to the saloon, a large V berth with infill to create a double berth with storage beneath. This could easily be separated from the main cabin with curtains or blinds allowing increased privacy when required whilst retaining the spacious feel of the saloon. **SALOON:** Dinette seating area to port with settee berth opposite, useful storage areas and cassette/radio stereo system. Socket for TV. **GALLEY:** Located aft to starboard and equipped with a 2-burner gas cooker with grill, separate oven, microwave, refrigerator, stainless steel sink and various storage cupboards. **HEADS COMPARTMENT:** Separate heads to port with marine toilet, washbasin, shower, mirror and stowage. **WHEELHOUSE:** Helm position with excellent visibility to starboard and full engine instrumentation, navigators position to port and access to aft cabin and deck aft. **AFT CABIN:** Double berth to starboard with dressing table, storage and Ensuite to port. Ensuite heads compartment with marine toilet, washbasin, shower, mirror and stowage. **GENERAL EQUIPMENT:** Hot and cold pressurised water system via immersion and calorifier. Beige chenille upholstery, heated throughout via a Webasto diesel heating system. **EXTERNAL SPACE:** The flybridge has a central helm position with bench seats either side. An aft deck provides access to the flybridge and room for sunbathing while full grab rails allow passage fore and aft safely.

Mechanical

Mechanical Systems

Located under the wheelhouse sole, twin Perkins Sabre M300TI 6-cylinder 300hp intercooled turbo diesel engines (replaced in 2004) 600 hours. Freshwater cooled via heat exchangers. Twin single lever controls at both helms. Dual station steering. Twin shaft drives to 4-bladed propellers. 909 Litre fuel capacity.

Electrical Systems

6 x 12/24v Batteries charged via engine alternators. Battery charger and management system Shore power system with ring mains. Full cabin lighting.



Deck Equipment

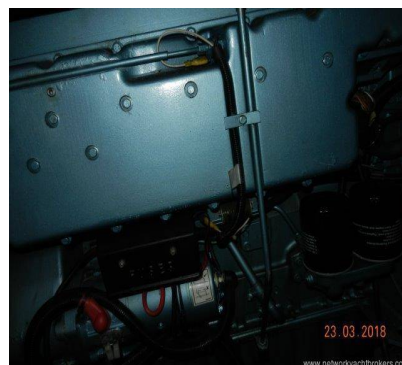
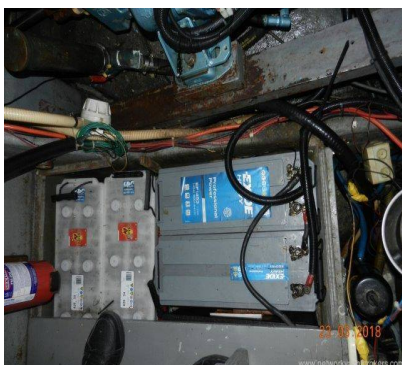
- 1 x Anchor Chain/Warp
- Windlass (electric)
- Lifeline gates
- Bathing platform
- Boarding ladder
- 8 x Fenders
- 4 x Mooring warps

Navigation Equipment

- Compass
- Depth
- Speed/Log
- 2 x VHF Radios
- GPS/Chartplotter (Raymarine)
- Radar
- AIS
- Autopilot
- Navtex
- Clock/Barometer
- Navigation lights

Safety Equipment

- 3 x Fire extinguishers
- Auto fire extinguisher engine compartment
- 2 x Life jackets
- 2 x Bilge pumps (electric and manual)



Contact

Network Yacht Brokers Kent

KENT OFFICE

Address:

Network Yacht Brokers Kent Chatham Maritime Marina Leviathan Way, Chatham, Kent ME4 4LP

Telephone: +44 (0)1634 571605

Email: info@nybkent.com

