

Bayliner Bayliner 285



YEAR 2006 | £38,995 | VAT PAID | KENT OFFICE



Summary

Manufacturer: Bayliner Bayliner 285

Price: £38,995

Location: Kent

Year: 2006

ID no.: 3864

DIMENSIONS

- **LOA:** 28' 6" (8.69m)
- **Beam:** 9' 10" (3.00m)
- **Draft:** 1' 8" (0.52m)
- **Keel:** Planing

ACCOMMODATION

- **Berths:** 6
- **Cabins:** 2
- **Heads:** 1
- **Showers:** 1

PERFORMANCE

- **Top Speed:**
- **Cruising Speed:**

TANKAGE

- **Fuel:** Petrol
- **Fuel Tank Size:** 102 Gallons
- **Water Tank Size:** 33 Gallons

MACHINERY

- **Engine Make:** Mercruiser 5.7L
- **Horsepower:** 350
- **Drive Type:** Sterndrive

OTHERS

- **Aircon:** No
- **Heating:** No

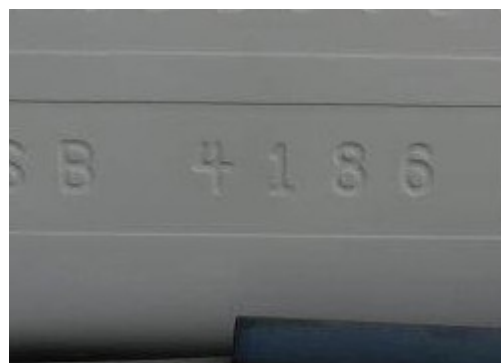


Bayliner Bayliner 285

Broker Remarks

2006 Bayliner 285 £38,995

The Bayliner 285 is one of the most popular in the range offering two permanent double berths, a practical dual cockpit layout and good performance. This high specification example is in good condition for its age. It is worth arranging a viewing.



Accommodation

This motorboat offers six berths in two cabins with 6'5" maximum headroom. The Forepeak has a sizeable double berth separated from the main cabin by a curtain. Saloon consisting of a dinette area which converts to form a double berth to starboard, small seat and a large linear galley to port with a 2-burner electric hob. Microwave, 12v fridge, stainless steel sink with pressurised hot and cold-water supply and storage.

Heads compartment to starboard with Jabsco marine toilet with macerator and holding tank, washbasin and shower with hot and cold water supply. Calorifier with 230v immersion coil. Generous aft double berth beneath cockpit floor with storage. Light multi coloured cabin upholstery and blue/beige curtains and carpets. Spacious dual cockpit design with ample seating.

Mechanical and Rigging

Mechanical:

Located under cockpit sole, Mercruiser 350hp 5.7ltr petrol engine with single lever controls with electric start. Mercruiser Bravo III outdrive. Trim tabs. Full engine instrumentation including temperature, oil pressure, rev counter, trim, fuel, and battery gauges.

Electrical:

2 x 12v Batteries charged via engine alternator. Shorepower connection with 240volt battery charger, 240 volt ring mains with immersion coil and inverter.



Deck Equipment:

- Anchor
- Windlass (electric)
- Full cockpit enclosure
- Tonneau cover
- Bathing platform
- Boarding ladder
- 6 x Fenders
- 3 x Mooring lines

Navigation Equipment:

- Compass
- Depth
- Speed/Log
- Chartplotter (Navman)

Safety Equipment:

- Fire extinguisher
- Fire blanket
- Gas alarm
- Life jackets

Contact

NETWORK YACHT BROKERS KENT KENT OFFICE

Address:

Network Yacht Brokers Kent Chatham Maritime Marina Leviathan Way, Chatham, Kent ME4 4LP

Telephone: +44 (0)1634 571605

Email: info@nybkent.com

Disclaimer : Network Yacht Brokers Kent offers the details of this vessel for sale but cannot guarantee or warrant the accuracy of the information contained in the specification or warrant the condition of the vessel or equipment. A buyer should instruct his agents, or surveyors, to investigate such details as the buyer desires validated. This vessel is offered for sale subject to no prior sale, price change, or withdrawal without notice.

