

# Sealine International S38

YEAR 2006 | £99950 | KENT OFFICE



This sports cruiser is being sold by an ABYA approved broker



## Summary

**Manufacturer:** Sealine International S38

**Price:** £99950

**Location:** Kent OFFICE

**Year:** 2006

**ID no.:** 38592

### DIMENSIONS

- **LOA:** 37' 10" (11.53m)
- **Beam:** 12' 2" (3.71m)
- **Draft:** 3' 1" (0.95m)
- **Keel:** Deep V Planing

### ACCOMMODATION

- **Berths:** 7
- **Cabins:** 3
- **Heads:** 1
- **Showers:** 1

### PERFORMANCE

- **Top Speed:** 28 Knots
- **Cruising Speed:** 20 Knots

### TANKAGE

- **Fuel:** Diesel
- **Fuel Tank Size:** 668 Litres
- **Water Tank Size:** 274 Litres

### MACHINERY

- **Engine Make:** Volvo Penta D4
- **Horsepower:** 260
- **Drive Type:** Sterndrive



# Sealine International S38

## Broker Remarks

**2007 specification Sealine S38 for sale in Kent Reduced to sell** - This October 2006 built to 2007 specification **Sealine S38** which has been owned by the current owner for the past eight years is a family-friendly sports cruiser offering comfortable accommodation with seven berths available in two cabins and the saloon. The master cabin has access to the shower compartment and separate toilet, while the guest cabin provides a spacious three-berth arrangement, with two capable of forming a king-size double. The spacious deck is ideal for entertaining and there is bathing platform that allows easy access to the boat and is equipped with a hot and cold transom shower. The combination of spacious accommodation, good performance, practical features, and Sealine build quality makes a **Sealine S38** a great choice. A berth in Chatham Marina is also available.

**This vessel will be available to view at the Used Boat Show in Chatham Marina, Kent, between 10:00 and 16:00 on Saturday, 12<sup>th</sup> April, and Sunday, 13<sup>th</sup> April 2025.**





## Accommodation

The **Sealine S38** offers seven berths in two cabins and the saloon. When you enter the boat from the bathing platform you are presented with a great entertaining space with a U-shaped seating area with table to starboard with inserts to convert to a sun pad for lounging around. To port is a fridge, wet bar with a Corian lifting lid and further forward is a chaise longue. Opposite is the double adjustable helmsman seat which provides great all-round visibility and access to the array of navigation equipment. Cockpit upholstery in Sandstone SilverTex material new in 2019

The sliding companion way hatch opens and secures to provide access down to the saloon with its 6ft 6 inches headroom. The saloon has a dinette to starboard which also converts to a double berth. The saloon has brown velour upholstery. Opposite is the well equipped galley which has 2 burner gas hob with oven and grill and twin sinks with pressurised hot and cold water. Hot water is provided by the engine and a 240v immersion heater. There is lots of storage throughout the saloon and galley area. There is a 22 inch LED TV with DVD player in the saloon and a further TV in the aft cabin. It has a Blaupunkt radio/DVD fitted with speakers fitted in

the saloon and cockpit areas.

The saloon offers access to the shower compartment to port and the heads compartment to starboard. The heads has a 113 litre holding tank fitted.

Forward of the saloon is the owners cabin with a large central island berth with storage lockers and hanging wardrobes. This cabin is very light and airy. There is also direct access to the shower and heads compartment from the forward cabin.

Aft of the saloon is access to the under cockpit aft cabin which has three single berths. The twin of which can be converted to a double berth. There is a hanging locker and lots of general storage space. Cabinet fitted with sink, with hot and cold water supply. Folding lid on top.

The overall feel of the boat is very light and airy, but because of the quality of the internal fittings and woodwork has a real rich and luxurious feel. This is enhanced on those cold evenings by the Eberspacher diesel cabin heating which has outlets in all cabins and makes the boat feel very cosy.

The forward deck has plenty of space to just sit out and relax when at anchor and enjoy a glass or two of wine. The canopies were replaced in April 2022 in WeatherMax materials by Bailey & Stone Ltd.

# Mechanical and Rigging

## Mechanical Systems:

This 2007 Sealine S38 has twin Volvo Penta D4 260 turbo charged diesel engines with stern drives to 2 fixed 4 bladed propellers.

Starboard DPH Aquamatic Drive replaced with brand new leg May 2023. Provided and fitted by French Marine Motors Ltd. Port DPH Aquamatic Drive rebuilt September 2024, all mechanical components replaced with new bearings, seals and bellows, New propellers fitted June 2024 on Port leg, All work undertaken by SB Marine of Dover. . The engines have 1197 hours as at 11th July 2024.

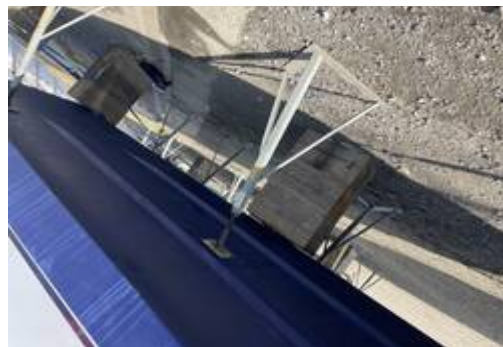
Engines are controlled by Volvo Penta EVC duel lever electronic controls. With Lewmar bow and SidePower stern thrusters making for close quarters manoeuvrability in marinas very easy. It is fitted with two aluminium fuel tanks which each hold 332L.

This cruiser has an approximate cruising speed of 20 knots and an approximate maximum speed of 28 knots, making this sports cruiser the perfect coastal and cross channel cruise. The engines will be fully serviced September 2023. A detailed service history is available upon request. The bellows were last changed in June 2023

## Electrical Systems:

This Sealine S38 is fitted with 3 x 12v Domestic batteries 105AH (2 new 2022, 1 new 2024), 2 x 12v 105AH engine batteries 105amp (new 2024) and 1x 12V Bow/stern thrusters 105AH (new 2019)

All batteries charged by the engine alternator 12v/40amp.and 240v battery charger. There is a Battery Management system (pro 63140) There is a 240v shorepower systems with full ring main with outlets in all cabins and saloon, immersion heater, battery charger and inverter. This boat was factory





- 1 x Delta anchor with chain and warp 35m of each
- Electric Windlass (Lewmar)
- Bimini -new 2022
- Cockpit enclosure - new 2022
- Teak covered bathing platform
- Boarding Ladder
- 8 x Fenders
- 8 x Mooring Warps
- Davits
- Water Hoses

**Navigation Equipment:**

- Compass - Richie
- Depth (Raymarine ST60)
- Speed/Log (Raymarine ST60)
- VHF (Raymarine 240 digital selective calling)
- Chart Plotter (Raymarine E80)
- Radar (Raymarine integrated in chart plotter)
- Radome Scanner
- Electronic Charts (Navionics)
- Deck Level Lights
- Paper Charts
- Clock and barometer

**Safety Equipment:**

- Fire Extinguisher x 3
- Engine room Fire Extinguisher
- 2 x Fire Blanket
- Gas Alarm
- 3 x Smoke Alarms
- Horseshoe Lifebuoy
- 2 x Manual Bilge Pumps
- 4 x Electric Bilge pumps
- First Aid Kit
- Radar Reflector

**Hull:**

Planning hull with hydraulic steering

**History and Construction:**

design and engineering, Sealine has always been quick to adapt and innovate. Right from its inception, it channelled its efforts into the design and production of GRP power cruisers for the recreational market - and the key design intent behind these craft was to ensure that every spare inch of space was profitably utilised for the benefit of the owner.

This Sealine S38 with its white GRP hull and superstructure with teak bathing platform and cockpit has been well maintained by the current owners who have owned the boat for the last eight years. They have used the boat to cruise the UK East Coast and also taken her across to Holland and France. The boat was last out of the water in March 2025 when the hull was polished to hand rail level, Re antifouled, Trim tab Anodes replaced, Propellers re antifouled and port engine exhaust hose replaced. The owner is only selling as they are looking to travel new horizons. The maintenance of this vessel and what work has been completed is well documented including documentation for the factory hull strengthening.

**This sports cruiser is currently moored at Chatham MDL Marina where she is available to view and a berth is available.**





# Contact

## Network Yacht Brokers Kent

### KENT OFFICE

**Address:**

Network Yacht Brokers Kent Chatham Maritime Marina Leviathan Way, Chatham, Kent ME4 4LP

**Telephone:** +44 (0)1634 571605

**Email:** [info@nybkent.com](mailto:info@nybkent.com)

