

# Carter Carter 30

**YEAR 1980   |   £9,750   |   KENT OFFICE**



## Summary

**Manufacturer:** Carter Carter 30

**Price:** £9,750

**Location:** Kent OFFICE

**Year:** 1980

**ID no.:** 3822

### DIMENSIONS

- **LOA:** 29' 9" (9.07m)
- **Beam:** 10' 1" (3.07m)
- **Draft:** 5' 3" (1.6m)
- **Keel:** Fin keel

### ACCOMMODATION

- **Berths:** 6
- **Cabins:** 2
- **Heads:** 1
- **Showers:** 1

### PERFORMANCE

- **Top Speed:** 7.0 Knots
- **Cruising Speed:** 6.0 Knots

### TANKAGE

- **Fuel:** Diesel
- **Fuel Tank Size:** 57 Litres
- **Water Tank Size:** 114 Litres

### MACHINERY

- **Engine Make:** Volvo Penta MD7A
- **Horsepower:** 13Hp
- **Drive Type:**



# Carter Carter 30

## Broker Remarks

This **Carter 30** was built in 1980 at the Teliga yard in Poland to a design by Dick Carter. She has a White GRP hull and superstructure with moulded non-slip deck surfaces. Lead fin keel. Tiller steering to skeg hung rudder. Self-draining aft cockpit. Teak toe rail. She offers six berths in two cabins. She is up for sale as the owner does not have the time to use the boat. This vessel has had approx six previous owners and has been owned by the current owner for the last nine years. This vessel is on the British Ships Part 1 Register. The owner is open to reasonable offers.



## Accommodation

This Carter 30 offers 6 berths in 2 cabins with approx. 6ft standing headroom. Forward cabin has a V-berth forward with infill converting to double and hatch to deck.

There is a separate heads compartment to port with stainless steel washbasin and shower.

The saloon has an L-shaped settee to port which converts to a double berth and a single settee berth to starboard, both approx. 6'3" long, and a central saloon table with folding leaves. The Chart table is to starboard with quarter berth aft. The Galley is to port consisting of a 2-burner gas hob and grill, cool box and stainless steel sink. It has a 114-litre freshwater tank. Upholstered in light brown check fabric throughout.

The companionway steps lead up to a reasonably sized cockpit which has good locker space.

# Mechanical and Rigging

## Mechanical and Rigging:

This Carter 30 has a 13hp Volvo Penta 2 cylinder MD 7A located under the cockpit sole with direct cooling. The engine is linked to a Saildrive 110s unit. Control is by a Volvo Penta single lever morse control. It has a folding 2 blade propeller.

There is an alloy fuel tank with a capacity of 57 litres. She has a cruising speed of 5-6 knots with a maximum speed of 7 knots.

## Electrical:

2 x 12 volt batteries (1 x engine + 1 x domestic) both 70ah, charging from alternator and 240 Volt Battery charger by shorepower system.

## Spars & Sails:

A Masthead Bermudan Sloop rig . Proctor Alloy Mast and boom with alloy Spinnaker pole. Stainless Steel standing rigging (new 2008) The running rigging material is Terylene. The Furling system is by Rotostay.

## Winches:

- 2 x Barlow 25 2 speed sheet winches
- 3 x Barlow 16 single speed Halyard winches
- 1 x Lewmar 30 single speed
- 2 x Barlow 16 single speed
- 1 x Lewmar 6 single speed on the boom

## Sails:

- 1 x Mainsail, Dacron,
- 1 x Working jib, Dacron,





**Safety Equipment:**

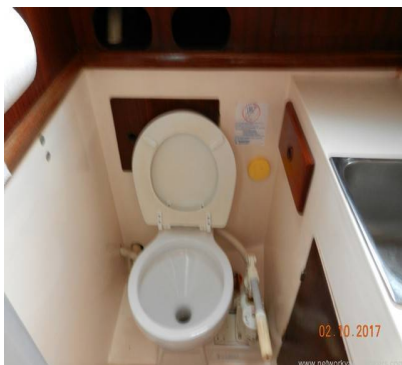
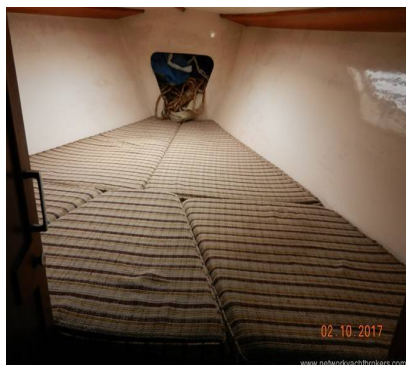
- 2 x Fire Extinguishers
- 1 x Fire Blanket
- 1 x Cockpit Harness point
- 1 x Deck light
- 1 x Horseshoe lifebuoy
- 1 x Floating light
- 1 x Electric bilge pump
- 2 x Manual bilge pump
- 1 X Radar reflector

**Navigation Equipment:**

- Compass, Plastimo mini contest x 2
- Depth, Nassa Clipper (pre 2008 )
- Speed/log, Nassa Clipper (pre 2008 )
- GPS, Garmin GPS 128
- Radar, Raytheon R11xx stand alone radar
- Autopilot, Simrad TP10
- VHF, Seavoice 550
- Deck and Mast level navigation lights
- Various South coast and some East coast charts

**Deck Equipment:**

- Anchors - 1 x CQR 9kg and 1 x kedge CQR anchor with 30m chain and warp
- Mainsail cover
- Boarding ladder
- 6 x Fenders
- 8 x Warps
- Boat hook and 2 x scrubbers



# Contact

## Network Yacht Brokers Kent

### KENT OFFICE

**Address:**

Network Yacht Brokers Kent Chatham Maritime Marina Leviathan Way, Chatham, Kent ME4 4LP

**Telephone:** +44 (0)1634 571605

**Email:** [info@nybkent.com](mailto:info@nybkent.com)

