

Sovereign 32

YEAR 1990 | £13,500 | KENT OFFICE



© Network Yacht Brokers 2020



Summary

Manufacturer: Sovereign 32

Price: £13,500

Location: Kent OFFICE

Year: 1990

ID no.: 38193

DIMENSIONS

- **LOA:** 31' 8" (9.65m)
- **Beam:** 10' 3" (3.12m)
- **Draft:** 5' 9" (1.75m)
- **Keel:** Fin keel

ACCOMMODATION

- **Berths:** 4
- **Cabins:** 2
- **Heads:** 1
- **Showers:** 1

PERFORMANCE

- **Top Speed:**
- **Cruising Speed:**

TANKAGE

- **Fuel:** Diesel
- **Fuel Tank Size:** 110 Litres
- **Water Tank Size:** 200 Litres

MACHINERY

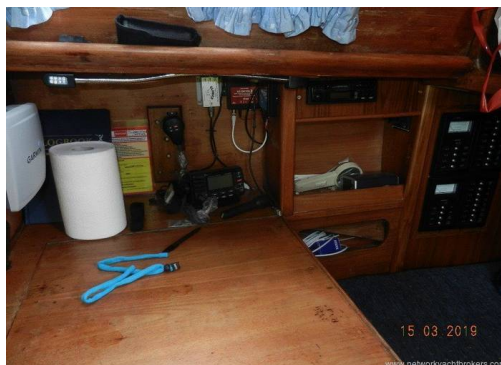
- **Engine Make:** Perkins
- **Horsepower:** 28
- **Drive Type:** Shaft drive



Sovereign 32

Broker Remarks

The **Sovereign 32** - ideal introduction to classic boating in style with this well-respected Ian Anderson design. "Kokui I" is a fine example of these robust and seaworthy long keelers put together at Uphams in Brixham. If you want to sail across an ocean or cruise the UK coastal waters. The **Sovereign 32** is an attractive and safe option and with a surprising turn of speed. Engine and gearbox replaced in 2013. A 2016 survey is available on request.



Accommodation

Forward large v-berth, with removable insert to convert to double. Shelf and storage lockers both sides. Full length hanging locker to starboard. Heads located to port. Jabsco toilet with handbasin with hot and cold pressurized water from mixer tap. Hot and cold shower from same mixer tap, Pump out shower tray. The saloon is a very spacious and well-lit living area, with four large and two small portlights. Main roof hatch. There are two settee berths, one of which converts into a double. Ample locker and shelf storage. The boat is upholstered in blue velour. A folding table serves both settees. The saloon is a large airy cabin, with 6'6" headroom. There are four large lockers, four bookshelves, and a drinks locker. Another six lockers are situated under the settee berths. Navigation Area with large chart table to starboard, also to starboard is a good-sized quarter berth and a wet hanging locker. The well-sized U-shaped galley is to port, and is equipped with a 2-burner hob, grill, and oven, Stainless steel sink with pressurized hot and cold water.

Mechanical and Rigging

Sails and Spars

Masthead Bermudian sloop. Anodised aluminium masts and booms by Selden. Stainless steel standing rigging. Terylene running rigging. Slab reefing mainsail. Furling head sail system.

Winches 2 x Sheet winches (self-tailing) 2 x Halyard Winches (self-tailing)

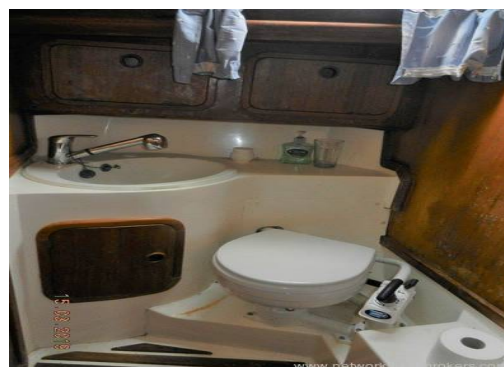
Sails 1 x Mainsail (Terylene good condition, last valeted 2018) 1 x Genoa (Terylene good condition, last valeted 2018)

Mechanical Systems

The **Sovereign 32** is powered by a single 2013 Perkins three-cylinder 28hp diesel engine, (240 hours as of March 2019) last serviced November 2017. Shaft drive to a 2 bladed fixed propellor. Stainless steel 110 litre fuel tank. Last out of water service 2017.

Electrical Systems

3 x 12-volt batteries (3 years old) charging from the engine alternator and 12-volt battery charger. 240-volt shore power connection with 240-volt ring main and inverter.



Deck Equipment

- 2 x Anchors (CQR & Bruce)
- Chain/Warp 60'
- Windlass (manual)
- Mainsail cover
- Sprayhood
- Cockpit dodgers
- Binnacle cover
- Boarding ladder
- 8 x Fenders
- 8 x Mooring warps
- Dinghy (Avon 3.7)
- Outboard engine (4hp Tomos)

Navigation Equipment

- Compass (Plastimo)
- Depth (NASA)
- Speed/Log (NASA)
- Windspeed/Direction (Raymarine)
- GPS/Chartplotter
- AIS receiver
- Autopilot (Raymarine)
- Navtex
- Electronic charts UK Eire
- Navigation lights
- Masthead lights
- Paper charts South Coast UK

Safety Equipment

- 4 x Fire extinguishers
- Engine room fire extinguisher
- Fire blanket
- Gas alarm
- CO detector
- Jackstays
- Cockpit harness points
- Harnesses
- 4 x Lifejackets
- Deck light
- Spotlight

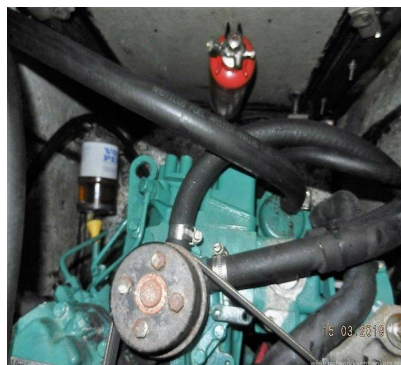
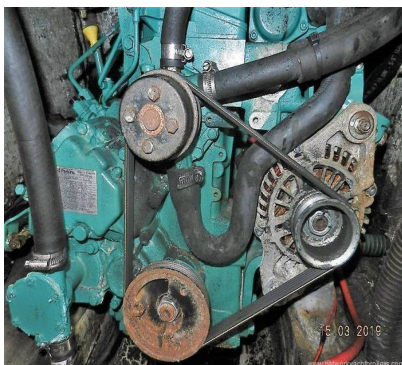
- Litterati (Fastimo 0-person, last service 2017)
- 2 x Bilge pumps (electric & manual)
- Radar reflector

Keel Hull

Fin Keel, Wheel steering.

History and Construction

The **Sovereign 32** is of White GRP construction, with the superstructure finished in cream. Wide decks finished in synthetic teak, with teak toe rails. Self-draining cockpit, the wheeled steering. Full epoxy treatment and copper coat 2013.



Contact

Network Yacht Brokers Kent

KENT OFFICE

Address:

Network Yacht Brokers Kent Chatham Maritime Marina Leviathan Way, Chatham, Kent ME4 4LP

Telephone: +44 (0)1634 571605

Email: info@nybkent.com

