

Broom 370

YEAR 2015 | £239,950 | KENT OFFICE



Summary

Manufacturer: Broom 370

Price: £239,950

Location: Kent OFFICE

Year: 2015

ID no.: 38187

DIMENSIONS

- **LOA:** 37' 10" (11.53m)
- **Beam:** 12' 4" (3.76m)
- **Draft:** 3' 4" (1.02m)
- **Keel:**

ACCOMMODATION

- **Berths:** 5
- **Cabins:** 3
- **Heads:** 2
- **Showers:** 2

PERFORMANCE

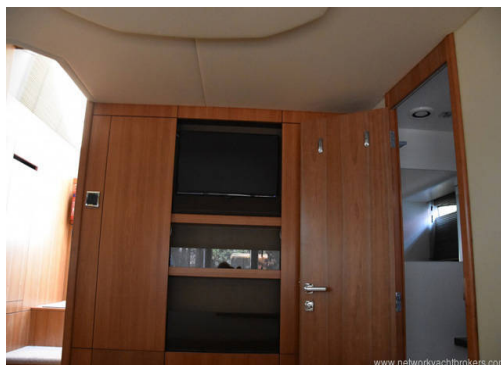
- **Top Speed:** 19
- **Cruising Speed:** 16

TANKAGE

- **Fuel:** Diesel
- **Fuel Tank Size:** 780 Litres
- **Water Tank Size:** 375 Litres

MACHINERY

- **Engine Make:** Volvo Penta
- **Horsepower:** 435
- **Drive Type:** Shaft drive



Broom 370

Broker Remarks

2015 Broom 370 £239,950 The Broom 370 was developed and refined to meet the demands of today's boat owner in terms of performance, style, ease of use, economy and around enjoyment. The Broom 370 is a good sea boat yet whilst being compact and manoeuvrable for use on inland waterways. This particular module has been specified to a very high standard and including both bow and stern thrusters, inverter, autopilot, warm air heating, TV's hydraulic mast lowering to name just a few. This motorboat must be seen to be believed.



Accommodation

The Broom 370 offers five berths in three cabins.

Forward Cabin: The forward cabin is fitted with twin berths, with premium foam mattresses with upholstered surrounds and hull linings. It has two large wardrobes, draws and shelves which give ample storage space. It also has a large opening deck hatch and portholes which makes it feel very light and airy. It has individual reading and roof lights fitted which make it feel very cosy at night.

Day Heads: Aft of the forward cabin and to port is day heads with lots of storage, white porcelain sink with pressurised hot and cold water and shower. It has a white marina electric heads with holding tank. There is lots of cupboard storage space and mirrors.

Galley: Opposite the Day Heads is the elegance and convenient U-shaped galley which has a large amount of work surface to prepare exciting meals. It has twin stainless steel sinks with hot and cold water, an electric 3 -burner hob unit with oven and grill, 12/240-volt electric refrigerator with freezer box and microwave. There is lots of storage space in the galley with additional large storage lockers beneath the teak floor. The galley is also fitted with an additional water purification system and an extractor fan above the oven. There are USB sockets fitted throughout the galley. From the galley three steps take you up to the Saloon

Saloon: The Saloon is extremely light and airy and provides a real luxury space in which to relax and entertain. There is a large U-shaped settee to starboard. There is a central table that can be moved around and opened out to fit your requirements. Opposite is an elegant chaise longue the

conceals the bottle storage and the LED TV which rises at a touch of a button. There are USB sockets fitted throughout the saloon. There is also a dedicated space for the Fusion home entertainment system. Opening skylights to the ceiling provide lots of natural light and ventilation. Custom made venetian blinds have been fitted throughout the boat. The central floor panels lift easily to provide good and easy access to the engine and battery banks.

Owners Master Aft Cabin: The owners master aft cabin which is down three steps with its ensuite heads with separate walk-in shower with electric head, heated towel rail and white walls is so light and spacious and provides an amazing feel of luxury to this cabin. The panoramic windows at the stern of the aft cabin give extensive views of the transom with fully recessed blinds for privacy. There is a very large central double bed with upholstered headboard, extensive wardrobes, locker space, mirrors, ceiling and reading lights. There is also a TV mounted on the companionway bulkhead. The aft cabin has warm air heating.

Cockpit: The aft cockpit provides extra space for relaxing and entertaining while enjoying the panoramic views. The full-width transom mounted bench seat, and convertible helm and navigators seat provides comfortable seating for up to six people. The helmsman's console has been laid out for safe and relaxing cruising. It has good all-round visibility and sight of engine instruments and navigation aids. The cockpit has a BBQ fitted. It has a large windscreen. The cockpit has a two part canopy which can be removed in sections. The mast has a powered electric/hydraulic lowering system. The cockpit also has warm air heating.

Mechanical

Mechanical Systems

This Broom 370 has a Volvo Penta D6-435 6 cylinder turbo diesel engine 435HP located under the saloon sole that was fitted in 2016. Freshwater cooled. It was last serviced in 2016 by Broom Marine Services and will be checked by Broom before completion of any sale. 780 Litre fuel tank. It has a shaft drive to a 4 blade bronze prop. Trim tabs. It has a 7HP Bowthrustrer and Sternthrustrer. this vessel will cruise at 16 knots and has a maximum speed of 19 knots

Electrical Systems

6 x 12 volt 165 AH AGM batteries (1 x engine + 3 x domestic 2 x bowthrustrer/sternthrustrer batteries) charging from alternator and via 240v shore power system with ring main, immersion heater and battery charger. 2Kw inverter.



- 1 x Anchor with 25m of chain and warp
- 1 x Anchor windlass - Electric - Lewmar
- Lifeline gates
- Cockpit enclosure in two sections
- Pair of hydraulic navigators seats in matching trim available by separate negotiation
- Cockpit Dodgers
- Teak cockpit table
- Cockpit speakers and remote control at helm
- Flexiteak Bathing platform
- Hot and cold water shower installed on the bathing platform
- Boarding ladder
- 6 x Fenders White
- 6 x Fenders Black
- Fender storage baskets
- 6 x Warps
- Cycle storage rack on bathing platform
- Cockpit electric barbeque with teak cover

Navigation Equipment

- Compass - Ricthie
- Depth - Airmard DST 800
- Speed/log Airmar DST 800
- VHF DSC Radio - Raymarine 260
- Handheld VHF - Raymarine 2015
- GPS - Raymarine RS130
- Chartplotter Raymarine E95 updated 2017
- Autopilot - Raymarine R70 updated 2017
- Clock and Barometer 2018

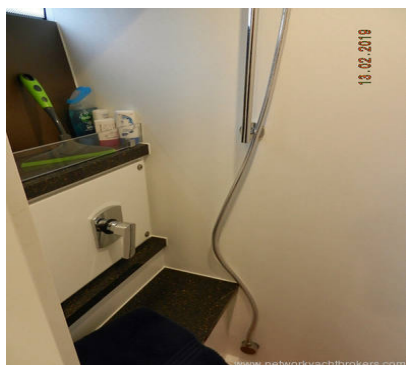
Safety Equipment

- 3 x Fire Extinguishers
- 1 x Auto Fire Extinguisher in engine bay
- 1 x Fire Blanket
- 1 x Coastal Flare pack
- 1 x Gas Alarm
- 1 x Smoke Alarm
- 1 x Decklight
- MOB Sling
- 3 x Electric bilge pumps

Deep Vee hull

Construction

Built in February 2015. White GRP hull and decks with moulded non-slip surfaces. Wheel steering. Stainless steel stanchions, pulpit. Glass windscreen with chrome surround. Walk through cockpit side gates to bathing platform. Flexiteak on bathing platform. Self-draining cockpit. She was out of the water in April 2018 when anodes changed and antifouled. She has currently been ashore since December 2018 and has just been antifouled (February 2019).



Contact

Network Yacht Brokers Kent

KENT OFFICE

Address:

Network Yacht Brokers Kent Chatham Maritime Marina Leviathan Way, Chatham, Kent ME4 4LP

Telephone: +44 (0)1634 571605

Email: info@nybkent.com

