



Fairline Fairline Targa

YEAR 2002 | £119,750 | VAT PAID | KENT OFFICE



Summary

Manufacturer: Fairline Fairline Targa

Price: £119,750

Location: Kent

Year: 2002

ID no.: 38174

DIMENSIONS

- **LOA:** 43' 0" (13.11m)
- **Beam:** 12' 6" (3.81m)
- **Draft:** 3' 4" (1.02m)
- **Keel:**

ACCOMMODATION

- **Berths:** 6
- **Cabins:** 2
- **Heads:** 2
- **Showers:** 2

PERFORMANCE

- **Top Speed:**
- **Cruising Speed:**

TANKAGE

- **Fuel:** Diesel
- **Fuel Tank Size:** 1060 Litres
- **Water Tank Size:** 280 Litres

MACHINERY

- **Engine Make:** Volvo Penta TAMD74P
- **Horsepower:** 480
- **Drive Type:** Shaft drive

OTHERS

- **Aircon:**
- **Heating:** Yes



Fairline Fairline Targa

Broker Remarks

2002 Fairline Targa 43 £119,750

The Fairline Targa 43 is rare within its class, offering timeless styling, great handling and performance whilst using shaft drives to improve reliability and reduce maintenance costs. Benefiting from Fairline's continuous development and famous build quality.



Accommodation

The accommodation offers up to six berths in two sleeping cabins and the saloon with good headroom throughout. (New upholstery 2017)

FORECABIN: Considered to be the owner's cabin and fitted with an island double berth with stowage beneath, large mirror, hanging locker and other useful storage. Ventilation and natural light provided by an opening hatch to foredeck and two opening portlights. Access to Ensuite heads compartment.

EN SUITE: Separate heads compartment fitted with an electric flush marine toilet, shower area with screen and extractor, wash basin, storage lockers and mirror.

SALOON: A 'U' shaped settee and two leather stools to starboard offers comfortable seating for 6+ around an oval table with folding leaves. Excellent stowage is provided beneath seating and in high level lockers. A stylish built in stereo system is fitted with speakers behind chrome grills whilst a round hatch and four portlights provide ample natural light and ventilation.

GALLEY: Linear galley to port and open plan to the saloon, equipped with a AEG ceramic 2-burner electric hob, Sharp combination microwave oven and grill, large 12/240v refrigerator, twin sinks with fitted covers and ample storage in various lockers and drawers. Fitted cocktail cabinet and crockery storage compartment

DAY HEADS: Separate heads compartment fitted with an electric flush marine toilet, shower area with screen and extractor, wash basin, storage lockers and mirror.

AFT CABIN: Offering twin berths with stowage beneath, wardrobe, small sofa, overhead lockers, mirrored storage, dressing area and two portlights.

GENERAL EQUIPMENT: Pressurised hot and cold freshwater system via a calorifier with shore power immersion coil. Cherry finish cabinetry combined with cream leather upholstery.

EXTERNAL SPACE: The teak laid self-draining aft cockpit has a dual helm position with adjustable seat to starboard, BBQ griddle and forward-facing navigators seating to port with chart storage area. Aft to starboard is a large C-shaped seating area with cockpit table which converts to a double sunbed. Opposite to port is a wet bar with second refrigerator and storage. Large aft sun pad with warp and fender stowage beneath over a tender garage which easily accommodates an inflatable dinghy, outboard and other equipment. Storage locker aft to starboard with access to exhausts, calorifier and other systems. Full cockpit canopy with zipped door and forward section converting to Bimini top. Walk-thru transom to large teak laid bathing platform with hot and cold shower and concealed swim ladder.

Mechanical and Rigging

Mechanical Systems

Located beneath cockpit sole, twin Volvo Penta TAMD74P 480hp 6-cylinder turbo diesel engines. Fresh water cooled via heat exchangers. Dual lever EDC electronic engine controls. Hydraulic wheel power steering. Twin stainless steel shafts via gearboxes to 3-bladed propellers. Full engine instrumentation. Bowthruster (Sleipner new 2017) joystick control. Hydraulic trim tabs.

Electrical Systems

4 x 12v Batteries charged via engine alternators. Shorepower system with ring mains, battery charger and immersion coil. Onan genset remote start. 12v Sockets. Full cabin and cockpit lighting. Electrical distribution panel with amp and volt



Deck Equipment

- Anchor/Chain/Warp
- Windlass
- Full cockpit enclosure
- Bathing platform
- Boarding ladder
- Fenders
- Mooring warps

Navigation Equipment

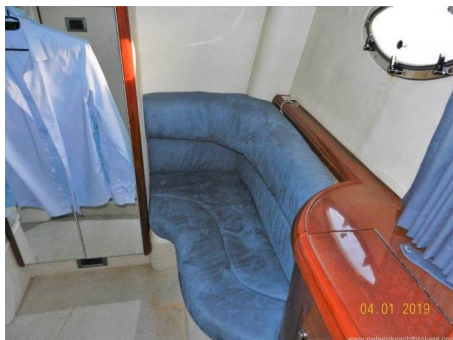
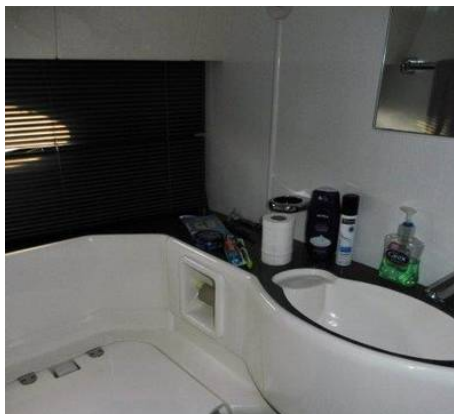
- Compass
- Depth
- Speed/Log
- VHF Radio
- GPS Chartplotter (Raymarine)
- Autopilot (Raymarine)

Safety Equipment

- Fire extinguishers
- Engine room fire extinguisher - new 2017
- Bilge pumps

History and Construction

Fairline Targa 43 built by Fairline Boats Ltd. in 2003 to a Bernard Olesinski and Fairline design. GRP blue and white planing hull with white superstructure, radar arch and decks with moulded non-slip surfaces. Integrated teak laid GRP bathing platform. Teak laid cockpit sole.



Contact

NETWORK YACHT BROKERS KENT KENT OFFICE

Address:

Network Yacht Brokers Kent Chatham Maritime Marina Leviathan Way, Chatham, Kent ME4 4LP

Telephone: +44 (0)1634 571605

Email: info@nybkent.com

Disclaimer : Network Yacht Brokers Kent offers the details of this vessel for sale but cannot guarantee or warrant the accuracy of the information contained in the specification or warrant the condition of the vessel or equipment. A buyer should instruct his agents, or surveyors, to investigate such details as the buyer desires validated. This vessel is offered for sale subject to no prior sale, price change, or withdrawal without notice.

