

Prior Coaster 33

YEAR 1974 | £21,995 | KENT OFFICE



Summary

Manufacturer: Prior Coaster 33

Price: £21,995

Location: Kent OFFICE

Year: 1974

ID no.: 38142

DIMENSIONS

- **LOA:** 32' 9" (9.98m)
- **Beam:** 10' 2" (3.10m)
- **Draft:** 4' 6" (1.37m)
- **Keel:** Long keel

ACCOMMODATION

- **Berths:** 6
- **Cabins:** 2
- **Heads:** 1
- **Showers:** 1

PERFORMANCE

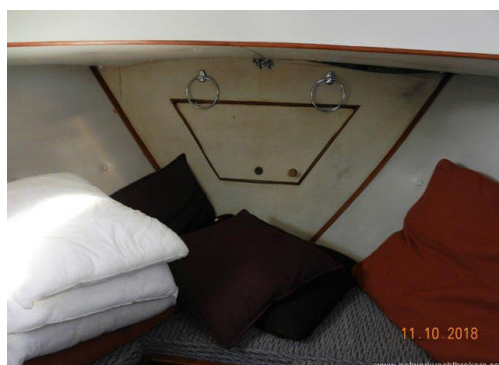
- **Top Speed:** 6.0 Knots
- **Cruising Speed:** 5.0 Knots

TANKAGE

- **Fuel:** Diesel
- **Fuel Tank Size:** 315 Litres
- **Water Tank Size:** 270 Litres

MACHINERY

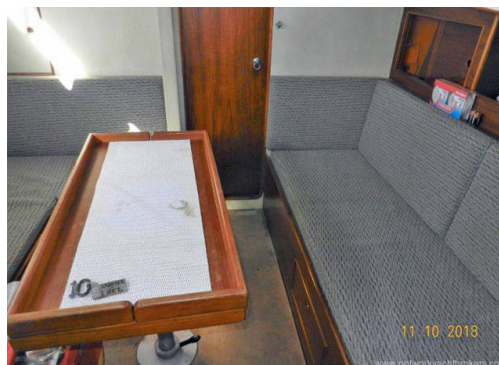
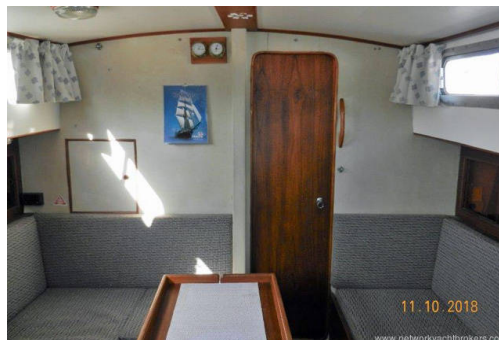
- **Engine Make:** Mercedes OM636
- **Horsepower:** 40
- **Drive Type:**



Prior Coaster 33

Broker Remarks

1974 Prior Coaster 33 £21,995 The **Prior Coaster 33** is a well-built motorsailer by designer Alan Hill which performs well under power or sail. With an easily handled with a long keel, ketch rig, sheltered wheelhouse and good accommodation, they make excellent cruising yachts for anyone wanting to spend extended time aboard in comfort. This good example that has been very lightly used with only 1500 hours on the engine as at 11th October 2018.



Accommodation

The layout offers six berths with two double sleeping cabins separate from the main accommodation. In the forecabin, V berth with infill and stowage under. Opening hatch to foredeck.

In saloon which has over 6ft of headroom there is a dinette to port with settee opposite. Fixed table with drop leaves. Separate heads compartment to port with marine toilet with holding tank and washbasin.

The galley is to starboard with a two burner gas cooker with oven and grill, microwave, 12V Fridge. It has a stainless steel sink with hot and cold pressurised water system with 90 gallon freshwater capacity. Hot water heated from engine and 240v immersion heater. In aft cabin there are two single berths.

Wallas diesel fired hot air central heating, new 2017, with the beige cloth upholstery and carpet gives this yacht a real cosy feel.

Mechanical and Rigging

Sails and Spars:

Ketch rigged. Anodised aluminium masts and booms. Stainless steel standing rigging. Terylene running rigging replaced as required. Slab reefing mainsail. Furling headsail system.

Winches:

- 2 x Lewmar halyard winches.
- 2 x Lewmar sheet winches.

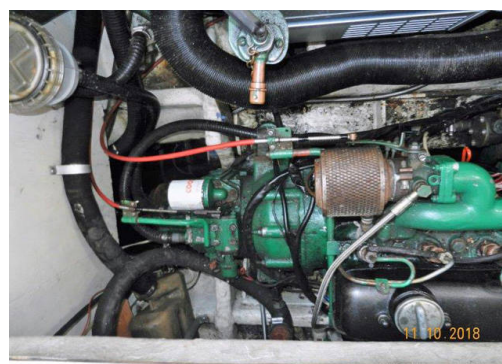
Sails:

- Mainsail, Dacron, age unknown condition fairly good - Tan
- Furling Genoa, Dacron, age unknown, the condition fairly good - Tan
- Mizzen, Dacron, age unknown condition fairly good - Tan
- Storm Jib, Heavy Dacron, age unknown, condition like new - Tan

Mechanical Systems:

Located under the cockpit, Mercedes 636 four cylinder 40hp diesel with 1500 engine hours, as at 11th October 2018, since new in 1974. Electric start. Engine last serviced April 2018. Freshwater cooled via heat exchanger. Shaft drive to fixed three bladed propeller. Single lever control. 70-gallon fuel capacity giving approximately 375-mile range at 5-knot cruising speed. Maximum speed under power 6 knots. New stern gear was fitted in 2014, including new shaft, cutlass bearing and the "Aquadrive" anti-vibration system was also removed and overhauled at the same time. The Engine alternator also has a smart charger fitted. Vetus through tunnel bowthruster.

Electrical Systems:



Deck Equipment:

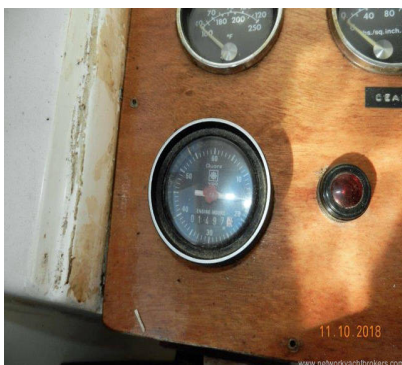
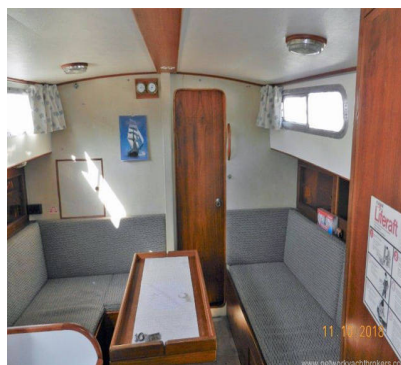
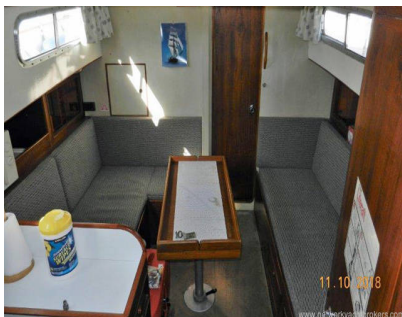
- Anchor Danforth with chain
- Anchor Windlass electric
- Sail Cover
- Cockpit cover
- Wooden swim ladder
- 6 x Mooring warps
- 6 x Fenders
- Mooring cone
- Anchor cone

Navigation Equipment:

- VHF DSC Icom with command mic
- Tridata, depth/speed/log Raymarine
- Wind system - Corus
- Compass
- Autopilot - Raymarine
- Chart plotter Furuno
- Radar - Furuno - colour
- Clock & Barometer
- Navigation lights
- Masthead Tri-light

Safety Equipment:

- 3 x Fire Extinguishers
- Gas Alarm
- Smoke Alarm
- Fire Blanket
- Wire jackstays
- Radar reflector
- Manual bilge pump
- Electric bilge pump



Contact

Network Yacht Brokers Kent

KENT OFFICE

Address:

Network Yacht Brokers Kent Chatham Maritime Marina Leviathan Way, Chatham, Kent ME4 4LP

Telephone: +44 (0)1634 571605

Email: info@nybkent.com

