

Colvic Colvic Sunquest

YEAR 1991 | £44,750 | KENT OFFICE



Summary

Manufacturer: Colvic Colvic Sunquest

Price: £44,750

Location: Kent OFFICE

Year: 1991

ID no.: 38130

DIMENSIONS

- **LOA:** 41' 0" (12.50m)
- **Beam:** 13' 1" (3.99m)
- **Draft:** 4' 1" (1.24m)
- **Keel:** Planing

ACCOMMODATION

- **Berths:** 4
- **Cabins:** 2
- **Heads:** 1
- **Showers:** 1

PERFORMANCE

- **Top Speed:** 30
- **Cruising Speed:** 16

TANKAGE

- **Fuel:** Diesel
- **Fuel Tank Size:** 1100 Litres
- **Water Tank Size:** 250 Litres

MACHINERY

- **Engine Make:** Volvo Penta
- **Horsepower:** 370
- **Drive Type:** Shaft drive

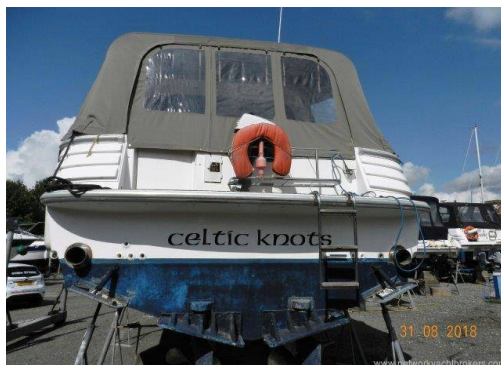


Colvic Colvic Sunquest

Broker Remarks

1991 Colvic Sunquest Sport 40- just reduced £44,750

The **Colvic Sunquest Sport 40** is a sleek, stylish cruiser with excellent accommodation and good sea keeping abilities ideal for long distance cruising. "Celtic Knots" is presented in very good condition. She has clearly been well cared for during her current ownership. Purchase price includes for the vessel to be antifouled and anodes changed prior to launch.



Accommodation

This **Colvic Sunquest Sport 40** offers 4 berths in 2 cabins with maximum headroom of 7ft in the saloon. Spacious owner's stateroom with a double bed with plenty storage and en-suite heads with sea toilet, hand basin and shower. Aft double guest cabin with plenty of storage. The galley is fully equipped with a combination gas 3 burner hob with grill and oven, microwave, sink and drainer with pressurised water system, water heated by immersion and engine calorifier, fridge/freezer and extensive storage. Large saloon which enables 6 to dine in comfort. Cream leatherette upholstery throughout. Large cockpit which could accommodate up to 6 people. Dual helm seats, sun pad, cocktail bar with fridge, and U-shaped seating around the cockpit table.

Mechanical and Rigging

Mechanical Systems

The **Colvic Sunquest Sport 40** is powered by twin Volvo Penta TAMD71B six-cylinder turbo charged 370hp diesel engines, to shaft drive to 4 bladed bronze propellers, Vetus Bowthruster and trim tabs. Fly by wire controls. Twin 550 litre stainless steel fuel tanks.

Electrical Systems

4 x 12-volt batteries (2015) charging from the engine alternators, battery charger, Shorepower connection with 240-volt ring main, immersion heater. Panda 6 kva generator not working.



Deck Equipment

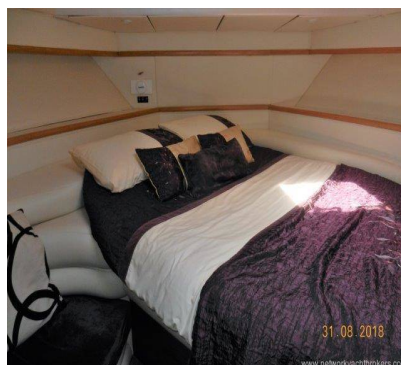
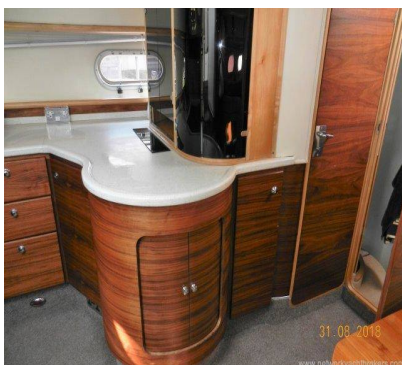
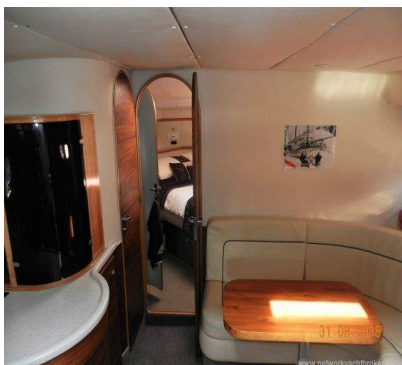
- 1 x Anchor
- Chain/Warp 20m
- Windlass (Lofrans electric)
- Full cockpit awning
- Bathing platform
- Boarding ladder
- 8 x Fenders
- 4 x Mooring warps
- Dinghy 4-seater
- Suzuki outboard (not working)

Navigation Equipment

- VHF Radio (Standard Horizon)
- Chart plotter (Standard Horizon)
- Electronic charts
- Paper charts (local)
- Navigation lights

Safety Equipment

- 2 x Fire extinguishers
- Fire blanket
- Deck light
- Horseshoe lifebuoy
- 2 x Bilge pumps (electric)
- Radar reflector



Contact

Network Yacht Brokers Kent

KENT OFFICE

Address:

Network Yacht Brokers Kent Chatham Maritime Marina Leviathan Way, Chatham, Kent ME4 4LP

Telephone: +44 (0)1634 571605

Email: info@nybkent.com

