

Unclassified Trawler Livaboard

YEAR 1997 | £39,995 | KENT OFFICE



Summary

Manufacturer: Unclassified Trawler Livaboard

Price: £39,995

Location: Kent OFFICE

Year: 1997

ID no.: 38127

DIMENSIONS

- **LOA:** 36' 0" (10.97m)
- **Beam:** 13' 8" (4.17m)
- **Draft:** 3' 11" (1.19m)
- **Keel:** Displacement

ACCOMMODATION

- **Berths:** 1
- **Cabins:** 1
- **Heads:** 1
- **Showers:** 1

PERFORMANCE

- **Top Speed:**
- **Cruising Speed:**

TANKAGE

- **Fuel:** Diesel
- **Fuel Tank Size:** 0
- **Water Tank Size:** 750 Litres

MACHINERY

- **Engine Make:** International Harvester
- **Horsepower:** 115
- **Drive Type:** Shaft drive



Unclassified Trawler Livaboard

Broker Remarks

1997 Trawler Liveaboard £39,995 "Tonka" is an exceptional great looking comfortable trawler liveaboard boat. This boat is fitted out to a very good standard and would be the ideal comfortable live a board boat. A full-size double cabin forward with a shower/toilet enclosure, the galley is found aft. There is also plenty of space out on deck with a fore deck and aft deck, the boat has recently been re painted and is in a very good condition. A 2014 survey report is available on request.



Accommodation

“Tonka” has been nicely fitted out forward double cabin with blue carpet, double bed to the portside, custom made sideboard and wardrobes, ceiling lights on dimmers, reading lights forward and over the bedhead, 240-volt sockets, access to the toilet/shower room, full size domestic shower. Heated throughout via gas heaters.

Traditional Trawler yacht Wheelhouse with side doors to the port and starboard, with a traditional ships wheel, Ceramic gas heater 2 Ikea chairs, engine instrument panel with circuit breakers, single throttle control, 240-volt sockets, access hatch to the engine space, access to the galley situated aft.

The Galley aft with plenty of cupboards for stowage and fully equipped with a gas oven and hob, hot and cold running water, microwave oven, fridge, stainless steel sink with drainer, small twin tub washing machine, cutlery, and domestic equipment. Opening hatches and portlights.

Mechanical and Rigging

The Trawler is powered via a 1997 International Harvester (marinised) 115hp six-cylinder diesel engine with 130 hours, shaft drive to a three bladed bronze propellor. Single lever control. Last out of water service May 2018.

Electrical Systems

2 x 24-volt domestic batteries for offshore and bilge pumps, 2 x 12-volt engine batteries, charging from the engine alternator, for instrumentation. 240-volt battery charger, shore power connection with 240-volt ring mains for onshore domestics and immersion heater.



Deck Equipment

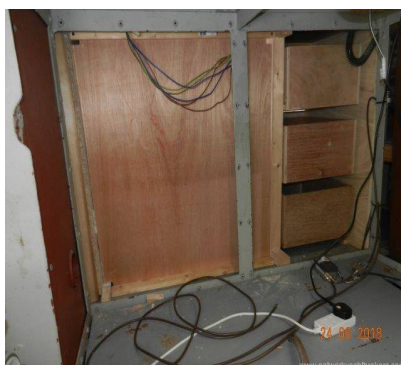
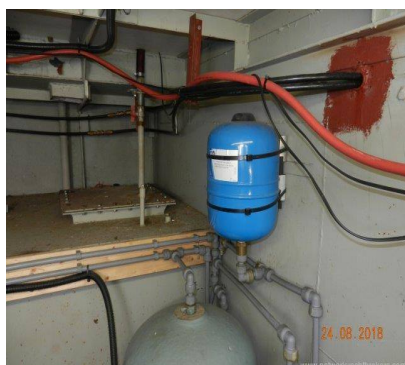
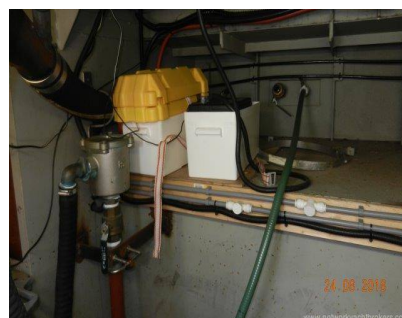
- 1 x Anchor
- Deck Bimini
- 7 x Fenders
- Chairs and deck table

Navigation Equipment

- VHF Radio
- Mounted compass

Safety Equipment

- Gas alarm
- Smoke alarm
- Fire extinguisher
- Bilge pump



Contact

Network Yacht Brokers Kent

KENT OFFICE

Address:

Network Yacht Brokers Kent Chatham Maritime Marina Leviathan Way, Chatham, Kent ME4 4LP

Telephone: +44 (0)1634 571605

Email: info@nybkent.com

