

Fairline Fairline 36

YEAR 1985 | £47,500 | KENT OFFICE



Summary

Manufacturer: Fairline Fairline 36

Price: £47,500

Location: Kent OFFICE

Year: 1985

ID no.: 38125

DIMENSIONS

- **LOA:** 36' 0" (10.97m)
- **Beam:** 13' 5" (4.09m)
- **Draft:** 3' 5" (1.04m)
- **Keel:** Planing

ACCOMMODATION

- **Berths:** 6
- **Cabins:** 3
- **Heads:** 2
- **Showers:** 2

PERFORMANCE

- **Top Speed:**
- **Cruising Speed:**

TANKAGE

- **Fuel:** Diesel
- **Fuel Tank Size:** 1050 Litres
- **Water Tank Size:** 450 Litres

MACHINERY

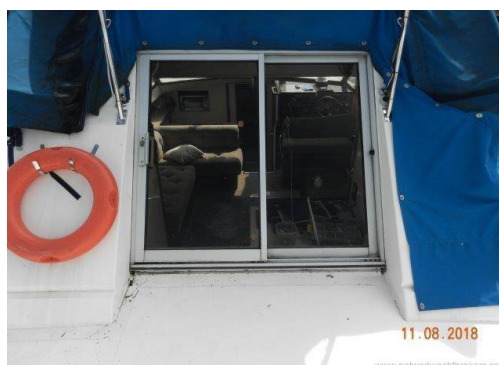
- **Engine Make:** Volvo Penta TAMD40B
- **Horsepower:** 165
- **Drive Type:** Shaft drive



Fairline Fairline 36

Broker Remarks

1985 Fairline Turbo 36 £47,500 The Fairline Turbo 36 is renowned for its superb sea capabilities. It's practical and comfortable and is a fine example of a popular Fairline cruiser. Great amount of space and very comfortable. The boat is currently afloat, and an early viewing is recommended.



Accommodation

This **Fairline Turbo 36** offers 6 berths in 3 cabins with maximum headroom of 6' 6". The forward cabin offers two single berths in V formation, with hanging lockers on both the port and starboard bulkheads. Coming aft, you have the galley on the portside, opposite on starboard side is the central main head. The galley is equipped with a single sink unit with hot and cold pressurised water system, water heated by a 240-volt immersion heater and a calorifier, a gas hob, grill and oven, along with a microwave, fridge, and stereo. Upholstered throughout in fawn velour, carpeted throughout. The saloon is higher than the galley which gives excellent visibility. The large aft cabin with full size double bed, with plenty of surrounding storage space

Mechanical and Rigging

Located under the saloon, Twin Volvo TAMD40B 165hp 6-cylinder turbo diesel engines. Shaft drive to 3 blade bronze props. Approximate cruising speed 18 knots to a maximum 23 Knots. Vetus Bowthruster, with trim tabs. Twin lever control.

Electrical Systems

4 x 12-volt batteries, charging from the engine alternator, 240-volt shore power connection with 240-volt ring main.



Deck Equipment

- 1 x Anchor
- Windlass (Lofrans electric)
- Bathing platform
- Boarding ladder
- Fenders
- Mooring warps
- Davits

Navigation Equipment

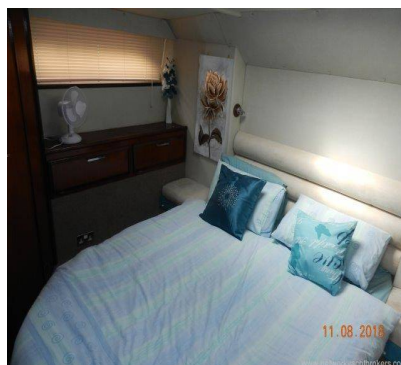
- Compass
- Depth
- Speed/Log
- VHF Radio (Garmin 200i)
- VHF Handheld radio
- Radar
- Chartplotter (Garmin 5008)
- Chartplotter (Garmin 5012)
- Clock/Barometer
- Navigation lights

Safety Equipment

- 3 x Fire extinguishers
- 3 x Life jackets
- Bilge pump

Hull

Planing



Contact

Network Yacht Brokers Kent

KENT OFFICE

Address:

Network Yacht Brokers Kent Chatham Maritime Marina Leviathan Way, Chatham, Kent ME4 4LP

Telephone: +44 (0)1634 571605

Email: info@nybkent.com

