

Ferretti Ferretti 690

YEAR 2015 | €1,650,000 | OFFICE



Summary

Manufacturer: Ferretti Ferretti 690

Price: €1,650,000

Location: OFFICE

Year: 2015

ID no.: 3642

DIMENSIONS

- **LOA:** 70' 6" (21.50m)
- **Beam:** 18' 1" (5.50m)
- **Draft:** 5' 3" (1.61m)
- **Keel:** Planing

ACCOMMODATION

- **Berths:** 8
- **Cabins:** 4
- **Heads:** 4
- **Showers:** 4

PERFORMANCE

- **Top Speed:** 33knots
- **Cruising Speed:** 24knots

TANKAGE

- **Fuel:** Diesel
- **Fuel Tank Size:** 4500 Litres
- **Water Tank Size:** 1200 Litres

MACHINERY

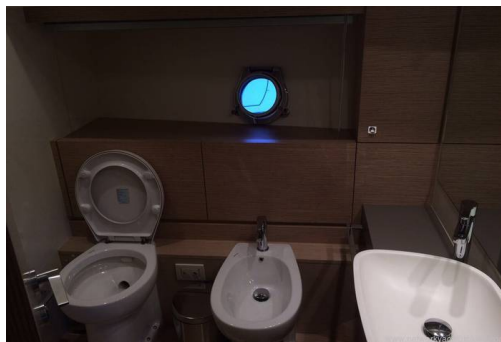
- **Engine Make:** MTU
- **Horsepower:** 2 x 1250hp
- **Drive Type:** Shaft drive



Ferretti Ferretti 690

Broker Remarks

Ferretti 690 Fly Bridge Yacht, launched 2015, hull laid 2013, presents in excellent condition with only 470 hours on her MTU V8 Diesels of 1250hp each, giving total power package of 2500hp, for economical and fast cruising at 24knots. There is comfortable overnight accommodation for 8 guests in 4 cabins with en suite facilities, plus a separate crew cabin for 3 persons with toilet, shower etc. The cabins are comprised of a full beam Master Suite with wardrobes, and vanity area, the VIP Cabin in the bow and two twin cabins amidships. The Twin cabins have a berth sliding system allowing for making the berths into doubles if required. The accommodation for this size Yacht is bright, spacious and modern with light finishing's throughout. Bose music system in all cabins with LCD TV's linked to the satellite system. A very comfortable cruising yacht with Air conditioning and a stabilizer makes it a pleasure to stay aboard for extended periods. The Galley is fully equipped and offers easy serving to the dining area, aft and on the fly bridge. The fly bridge has comfortable seating/dining and sun bed areas as well as a fitted wet bar with sink, BBQ, and fridge. A electric Bimini offers shade and protection for the elements. Well worth viewing and currently situated in Istanbul, Turkey.



Accommodation

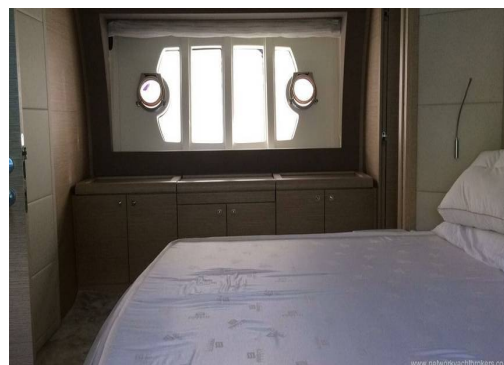
Ferretti 690 Fly Bridge Yacht, launched 2015, hull laid 2013, offers overnight accommodation for 8 guests in 4 cabins with en suite facilities, plus a separate crew cabin for 3 persons with toilet, shower etc. The cabins are comprised of a full beam Master Suite with wardrobes, and vanity area, the VIP Cabin in the bow and two twin cabins amidships. The Twin cabins have a berth sliding system allowing for making the berths into doubles if required.

The accommodation for this size Yacht is bright, spacious and modern with light finishing's throughout. Bose music system in all cabins with LCD TV's linked to the satellite system. A very comfortable cruising yacht with Air conditioning and a stabilizer makes it a pleasure to stay aboard for extended periods.

Mechanical

Ferretti 690 Fly bridge , launched and registered in 2015, hull laid in 2013, This Ferretti with 2 X MTU V8 diesels of 1250hp each giving a total power package of 2500hp comfortably cruising at 24 knots and consuming 350litres an hour. A top speed of 33 knots allows you to get from A to B in a hurry !

Very low hours of only 470 on each engine. Fitted with a 19kw generator, Stabilizer, Hydraulic swim platform, Bow and Stern Thrusters, Passerelle, and a third helm station control in the aft cockpit allows for easy docking procedure.



Stabilizer
Hydraulic Swim Platform
Full Raymarine Electronic Package
Fly Bridge Helm with Raymarine Electronics
3rd Helm Station Aft
Satellite TV System
LCD TV's in all cabins and Saloon
Bose Music System in all cabins
Air Conditioning throughout
Water Maker
Generator 19kw
Bow Thruster
Stern Thruster
Passerelle Hydraulic
Flaps
Underwater Lights
Wet Bar on Fly with fridge and BBQ
Fully equipped galley
Sunbeds
Cockpit cushions
Full Safety Equip for 8



Contact

OFFICE

Address:

Telephone:

Email:

