

# Beneteau Oceanis 46

YEAR 2008 | £125,000 | BARCELONA OFFICE



## Summary

**Manufacturer:** Beneteau Oceanis 46

**Price:** £125,000

**Location:** Barcelona OFFICE

**Year:** 2008

**ID no.:** 3423

### DIMENSIONS

- **LOA:** 46' 3" (14.09m)
- **Beam:** 13' 11" (4.25m)
- **Draft:** 6' 9" (2.05m)
- **Keel:** Fin keel

### ACCOMMODATION

- **Berths:** 6
- **Cabins:** 2
- **Heads:** 2
- **Showers:** 0

### PERFORMANCE

- **Top Speed:** 8 knots
- **Cruising Speed:** 6 knots

### TANKAGE

- **Fuel:** Diesel
- **Fuel Tank Size:** 200 Litres
- **Water Tank Size:** 530

### MACHINERY

- **Engine Make:** Yanmar 4JH4TE
- **Horsepower:** 75HP
- **Drive Type:** Shaft drive





# Beneteau Oceanis 46

## Broker Remarks

Introducing this lovely 2008 Beneteau Oceanis 46 Yacht, a stunning modern family cruising yacht with two double cabins, built to a very high specification. Designed by Berret-Racoupeau & Nauta Design this has been a very successful model for the Beneteau brand. You will find she is in excellent condition both inside and out and has been maintained to an extremely high standard by the current owner. This yacht was bought in the UK and then sailed to the Mediterranean for a summer of cruising. She has never been chartered and is lying in Barcelona and ready to sail with a berth available for anyone whom wishes to keep a yacht in this fabulous location.



# Accommodation

## Accommodation

Sleeps 6 Guests in Two cabins plus occasional single in saloon

Forward owners cabin with large double berth & private shower WC and sink, mattress battens, hanging lockers, dressing table and stowage, 240v wall socket

Private ensuite heads compartment with electric fresh water flush toilet, washbasin and separate circular shower stall, cup holder, 2 storage cupboards

Saloon with U shaped seating around a large pivoting and folding leaf table to port plus settee to starboard and two nesting stools

Large navigation table with seating

Galley to port with 4 burner gas hob with oven and grill, Panasonic microwave, front and top loading fridges as well as plenty of storage and worktop space. There is also twin stainless steel sinks, storage cupboards and drawers.

The master aft cabin is impressive with offset double berth with mattress battens, dressing table to port with seating, 2 hanging lockers and Digital safe.

There is an ensuite heads with electric fresh water flush toilet, washbasin, 2 overhead storage cupboards, and separate shower cubicle with door

Alpi fruitwood interior joinery

Parque style cabin sole

Cream cloth upholstery

Cream curtains

Eberspacher D5LC Diesel fired central heating with four outlets

LED interior lighting throughout

Ocean air blackout/mosquito blinds to all hatches

# Mechanical and Rigging

## Construction

The yacht is a white GRP hull and superstructure with teak deck, bathing platform and cockpit. The boat has a fin keel, spade hung rudder and twin wheel steering

## Rig

Fractional Sloop Rig  
Aluminium Spars  
Stainless steel wire rigging  
Slab reefing with all lines led aft to cockpit  
HarkenMKIV 3 Genoa furling gear - New 2014  
Flag Halyards  
Spectra Main halyard  
Up rated topping lift  
All running rigging renewed 2014  
All sails valeted

## Winches

Two Harken Electronic 48.2STC Genoa winches  
Two Harken (1 Electronic) 440.2STC Halyard winches

## Sails

Mainsail with stay pack and lazyjack  
Roller furling Genoa  
Brand new purpose built gennaker with snuffer (never used)

## Machinery

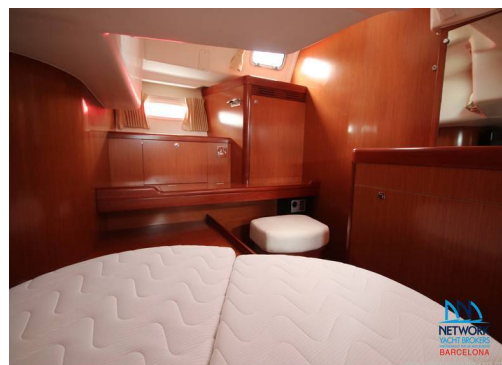
Engine: Yanmar 4JH4TE 75HP Diesel Engine  
Engine Hours 550 (this will fluctuate)  
Cruising Speed 7 knots  
Max Speed 8 knots

Shaft drive to bronze three bladed folding propeller  
Rope Cutter

SP100 Max Power bow thruster

## Electrics

12v switched battery bank; 1 x Engine and 1 x Domestic  
240v shore power  
Battery Charger  
Battery Monitor  
Bluetooth Sound system with speakers throughout boat and in cockpit (waterproof)





Raymarine E80 GPS Plotter with radar (all ray marine equipment is located in cockpit and at Helm) 2015  
Raymarine ST6002 smart pilot with remote hand held and tacking device 2015  
Raymarine ST60+ graphic display 2015  
Raymarine ST60+ wind 2015 Raymarine ST60+ Tridata 2015  
Icom IC-M505 DSC VHF with additional cockpit handset/mike connection  
Navigation Lights

**Ground Tackle**

20KG Delta Anchor, 10mm chain and warp  
Electric windlass

**General Equipment**

Nast head TV Antenna  
Flat screen TV in saloon  
Wall mounted dvd tv player in aft cabin  
Fusion MS-IP600 Stereo with saloon and cockpit speakers 2016  
Warps and fenders  
Bi-fold Pasorelle  
Cockpit table (revarnished)  
Separate clock, barometer and hydrometer  
Blue spray hood June 2014  
Blue Bimini June 2014  
Blue stack pack sail cover new 2016  
Sail valeted 2017

**Safety Equipment**

1 x Horseshoe lifebuoy  
1 x Rescue Sling  
Fire blanket in galley  
Fire extinguisher in engine compartment  
Side gates to starboard and port guard rails  
Six man life raft (not yet serviced as under 1 year)  
EPIRB

**Additional Agreed Items**

COCKPIT / LAZARETTES:  
Inflatable tender with pump and paddles  
Assorted lines  
Bosun's chair  
Distress kit (yellow barrel)  
6x Cockpit cushions  
2x Helm covers  
Cockpit table cover  
2x Winch covers

Plastic outboard swim ladder  
Boat hook  
Shore power cables  
(Assorted cleaning products + utensils)

**GALLEY:**

28-piece Beneteau dish set (6 mugs, 4 bowls, 18 plates)  
18-piece turquoise dish set (6 plates, 6 bowls, 6 mugs)  
3x matching turquoise containers  
4x clear plastic glassware  
Kettle  
8-piece tupperware set  
3-piece pot set  
Frying pan  
Strainer  
Ice trays  
Assorted cutting boards  
16-piece cutlery set (4 forks, 8 spoons, 4 knives)  
(Assorted cooking utensils + knives)

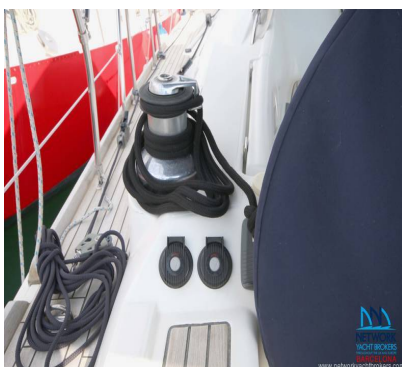
**SALOON:**

Lamp  
Bimini bags

**NAV DESK:**

TV remote  
Spare windex  
Beneteau owners manual  
Raymarine manuals  
(Other assorted manuals)  
2x Rail cup holders  
Spare winch handle  
Flashlight + charging cable  
Rechargeable air horn  
2x Spare engine belts  
Icom VHF handset for helm  
Navionic SD card for plotter  
3x spare light bulbs  
Spare impeller  
Spare ring clamps  
2x Deck fill keys  
Spare Raymarine cover  
2x Floor mat  
Spare batten car attachments&n





# Contact

**Network Yacht Brokers Barcelona**

**BARCELONA OFFICE**

***Address:***

Port Ginesta 810 08860 Castelldefels Barcelona

***Telephone:* [+34] 937978240**

***Email:* [info@nybbarcelona.com](mailto:info@nybbarcelona.com)**

