



# Commercial Passenger events

YEAR 1996 | €3,200,000 | VAT PAID | BARCELONA OFFICE



# Summary

**Manufacturer:** Commercial Passenger events

**Price:** €3,200,000

**Location:** Barcelona

**Year:** 1996

**ID no.:** 34128

## DIMENSIONS

- **LOA:** 140' 7" (42.84m)
- **Beam:** 39' 4" (12.00m)
- **Draft:**
- **Keel:** Displacement

## ACCOMMODATION

- **Berths:** 127
- **Cabins:** 0
- **Heads:** 0
- **Showers:** 0

## PERFORMANCE

- **Top Speed:** 9
- **Cruising Speed:** 7

## TANKAGE

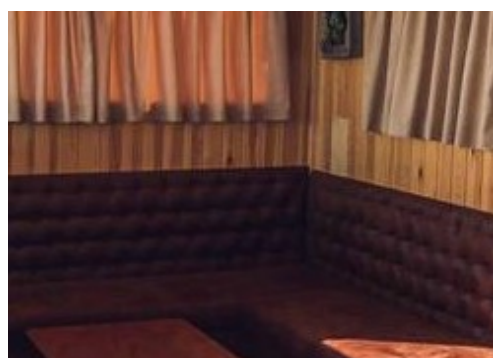
- **Fuel:** 0
- **Fuel Tank Size:** 15 Litres
- **Water Tank Size:** 0

## MACHINERY

- **Engine Make:** Volvo
- **Horsepower:** 350
- **Drive Type:** Shaft drive

## OTHERS

- **Aircon:**
- **Heating:**



# Commercial Passenger events

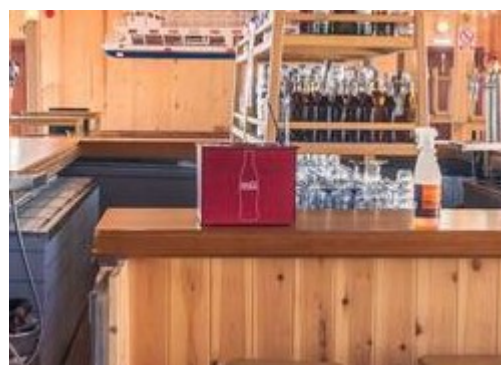
## Broker Remarks

The owner says, "All paperwork is in order, and the commercial licence is up to date. The ship is able with the current licence of holding 550 guests. She has the capacity to hold a major on-water event."

140-foot Events Catamaran for sale. This amazing vessel has a ballroom with a sweeping stairway leading to the open upper deck. Below is a dance floor that will wow your customers. She was renovated in 2019 and has only done a few hours of work since. Constructed of steel, she is sold with no hidden defects.

The ship is fully equipped with a cafe bar, two drinks bars (in the living room and on deck), bottlers, freezers, industrial dishwasher, sound, disco and dance lighting equipment. Included in the inventory are tables, armchairs, stools, two stages, and security CCTV.

For more information, contact any of our Network Yacht Brokers offices.





## Accommodation

Kitchen/microwave, electric refrigerator

The ship is fully equipped with a cafe bar; two bars (in the living room and on deck); bottlers, freezers, industrial dishwasher, sound and lighting equipment, tables, armchairs, stools, two stages, CCTV

## Mechanical and Rigging

The year of first construction was 1996. However, she was renovated in 2019, Matricula 2 Steel hull powered by a Volvo Penta 350 hp 4T axle diesel injection.

Fuel capacity 15,000 l. and water capacity 4,000 l.

No passengers - 550 people.



Radar and GPS,  
WC according to regulations  
Hydraulic steering  
Beacon Radio lounge table  
Electric windlass  
Auxiliary motor  
Radio CD - TV  
Battery charger  
Air conditioning  
Bow Thruster  
Four bilge pumps  
Toma 220 V.



# Contact

## NETWORK YACHT BROKERS BARCELONA BARCELONA OFFICE

**Address:**

Port Ginesta 810 08860 Castelldefels Barcelona

**Telephone:** [+34] 937978240

**Email:** [info@nybbarcelona.com](mailto:info@nybbarcelona.com)

Disclaimer : Network Yacht Brokers Barcelona offers the details of this vessel for sale but cannot guarantee or warrant the accuracy of the information contained in the specification or warrant the condition of the vessel or equipment. A buyer should instruct his agents, or surveyors, to investigate such details as the buyer desires validated. This vessel is offered for sale subject to no prior sale, price change, or withdrawal without notice.

