

Delphia 33

YEAR 2007 | €44,000 | DUBLIN OFFICE



Summary

Manufacturer: Delphia 33

Price: €44,000

Location: Dublin OFFICE

Year: 2007

ID no.: 3081

DIMENSIONS

- **LOA:** 32' 9" (9.98m)
- **Beam:** 11' 5" (3.47m)
- **Draft:** 5' 11" (1.8m)
- **Keel:** Fin keel

ACCOMMODATION

- **Berths:** 6
- **Cabins:** 2
- **Heads:** 1
- **Showers:** 1

PERFORMANCE

- **Top Speed:** 8
- **Cruising Speed:** 6

TANKAGE

- **Fuel:** Diesel
- **Fuel Tank Size:** 125 Litres
- **Water Tank Size:** 210 Litres

MACHINERY

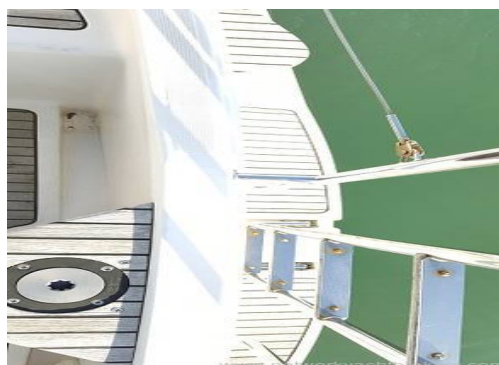
- **Engine Make:** Volvo D130B
- **Horsepower:** 30
- **Drive Type:** Saildrive



Delphia 33

Broker Remarks

The Delphia 33 from Poland is designed to combine accommodations and comfort with performance in an attractive contemporary looking yacht. With generous beam and head room with beam carried well aft to provide generous cockpit space and interior space. With high freeboard providing the interior space not often found in a yacht of this size. With bulb keel and aft swept spreaders with rig to inboard chain plates, this yacht is stiff in a breeze. This yacht in original ownership has never been raced or cruised in excellent condition externally and internally. Viewing will not disappoint.



Accommodation

A very spacious pleasing interior with ample light and generous proportions for a yacht of its size.

Main saloon with double drop leaf center table with bottle store.

Webasto heating in all cabins.

Settee berths.

Ample locker storage.

Bright interior with overhead hatch.

Mahogany timber finish.

Double drop leaf saloon table with bottle store.

Chart table with navigators seat.

Large heads aft with wet hanging rack, wash basin and shower.

Double aft cabin.

Forward double berths with center dressing seat. Sole lowered to provide head room.

Overhead hatch.

Hanging locker and shelf storage.

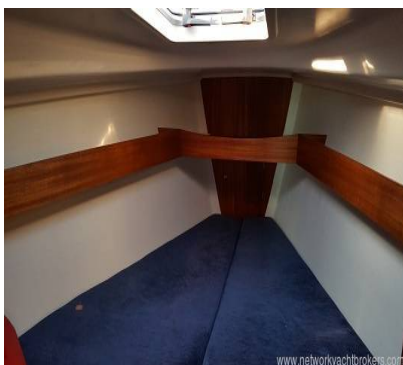
Pioneer stereo radio

Mechanical and Rigging

Volvo diesel
Sail drive
Furling headsail
Lazy jack main
Fully batten main sail
Main sail cover
Solid vang
Spinnaker
Spinnaker pole & sheets
2 X 12v Batteries



Fenders X 6
3 miscellaneous fenders
Mooring lines
Anchor and chain
Spare anchor
Radar
Fire blanket
2 X Fire extinguishers
Boat hook
Cleaning materials.
Ensign staff
Horse shoe life belt
Emergency MOB light
Spray hood
Spinnaker pole
iCom VHF
Raymarine speed & depth
Raymarine wind peed.
Garmin 3010c plotter
Garmin radar
Raymarine wheel pilot
Electric windlass
10k Rocna anchor
40m chain
30m heavy duty shore power cable.
Webasto heating
Electric hot & cold water to sink and wash
basin in heads.
H&C shower to bathing platform.
4 X guest lifejackets.
Bosun's Chair
Pioneer stereo CD & MP3 player
Gas cooker with oven.
Miscellaneous cutlery & crokery



Contact

Leinster Boats

DUBLIN OFFICE

Address:

NYB Dublin Leinster Boats.ie 5 Doonanore Park, Dun Laoghaire, County Dublin, Ireland.
A96X4W9 Principal Broker: Ronan Beirne

***Telephone:* 0862543866 Outside Ireland +00353 86 2543866**

***Email:* info@nybdublin.com**

