

Hans Christian 38T



YEAR 1981 | €69,000 | VAT PAID | DUBLIN OFFICE



Summary

Manufacturer: Hans Christian 38T

Price: €69,000

Location: Dublin

Year: 1981

ID no.: 30134

DIMENSIONS

- **LOA:** 38' 1" (11.60m)
- **Beam:** 12' 6" (3.80m)
- **Draft:** 6' 0" (1.83m)
- **Keel:**

ACCOMMODATION

- **Berths:** 6
- **Cabins:** 3
- **Heads:** 1
- **Showers:** 1

PERFORMANCE

- **Top Speed:** 8
- **Cruising Speed:** 5

TANKAGE

- **Fuel:** Diesel
- **Fuel Tank Size:** 275 Litres
- **Water Tank Size:** 178 Litres

MACHINERY

- **Engine Make:** Yanmar 3JH5E
- **Horsepower:** 39
- **Drive Type:** Shaft drive

OTHERS

- **Aircon:**
- **Heating:** Eberspacher



Hans Christian 38T

Broker Remarks

Helcia is a Hans Christian 38T six berth blue water cruising yacht offering the best in traditional design and timeless appeal of the classic ocean going yacht. Built in Taiwan in 1981. This is a heavy displacement GRP ocean cruiser with a long encapsulated keel, cutter rig, low deck house, deep sea going cockpit and a safe deck layout for sail handling. The substantial displacement contributes to a very sea-kindly motion. Equipped with sturdy ironmongery and fittings this vessel exudes strength, stability and tradition. Afloat Dublin, VAT paid.



Accommodation

Comfortable timber interior with overhead butterfly hatch.

Over 6' head room.

Beige button back upholstery.

Electric radiators in each cabin.

Bronze port holes and brass lamps contribute to the classic ambience of a sea going vessel.

Parafin heater mounted on bulkhead.

Skippers cabin aft to port side with double berth.

Quarter berth to starboard with stowage locker.

Chart table with chart storage underneath.

Galley to port with double deep sinks, Flavel gas cooker with oven, deep chest fridge.

(two gas bottles on deck).

Pressurised H&C water system.

Hot water calorifier.

Shore Power.

Settee to port with drop leaf table.

Settee berth opposite with lee cloth.

Two bunk berth cabin to port side forward of the bulkhead (as in photo).

Heads & shower in the f'cast'le with tile lining, WC with timber cover lid and shower seat finished in teak.

Shower sump extraction pump.

Wash basin set in marble surround.

Overhead escape hatch forward.

Diesel Stainless steel tank under saloon table.

Substantial stowage throughout the vessel.

Decommissioned aft fuel tanks used for stowage.

Air circulation fans.

Mechanical and Rigging

2015 replacement Yanmar 3JH5E 39 HP diesel.

c 460 hours April 2021

Stock of engine spares.

Replacement shaft drive to three blade fixed bronze propeller.

Tailshaft, Deep Sea seal & cutlass bearing replaced 20215.

4 X 12 V batteries.

Shore power.

Electric Neco windlass.

Proctor aluminium spars.

Cutter rig.

Yankee jib 2016 and Harken roller reefing 2012.

6 X winches

Main sail slab reef year 2004

Storm jib unused.

Staysail on a boom hanked and self tacking.

3 X Lewmar 42 winches.

1 X Lewmar 16 winch.

On mast 2 X Lewmar 30's

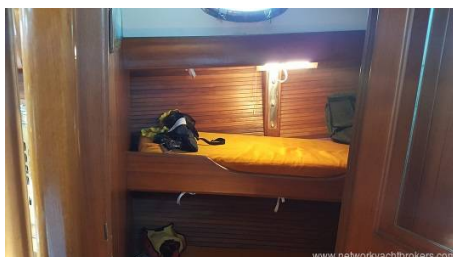
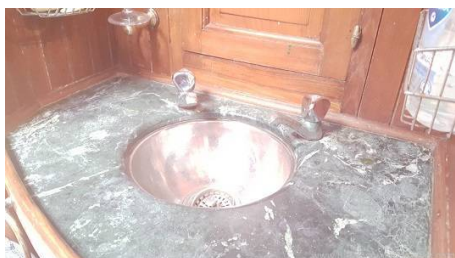
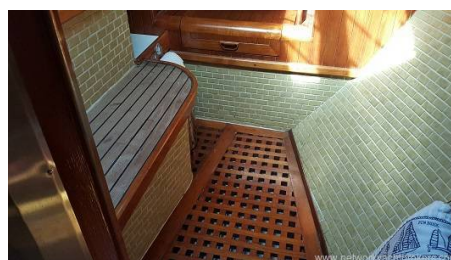
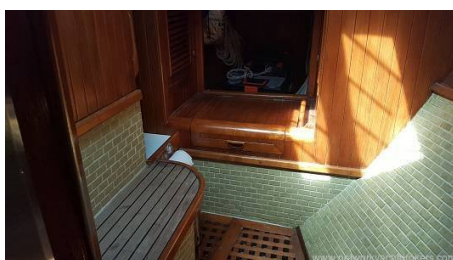
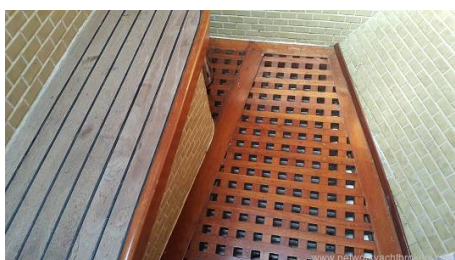
1 X Lewmar 8

Shore cradle.

Solar panel.



2 X CQR anchors 45lb & 15lb.
10mm full chain marked
Air horn.
Dodgers
Awning.
Boarding ladder
Dinghy
Yamaha Malta outboard.
Warps
Fenders
Boathook
Flag staff
2 X manual Whale bilge pumps
1 X Electric Whale bilge pump with float switch.
Cockpit spray hood and sail covers.
Cetrek / B&G Triton 2 autopilot.
Furuno Radar
VHF & GPS fixed and portable.
Wind, depth and speed instruments.
ICOM DSC VHF
Clipper Navtex
Navigator MK8 GPS
GME Accusat EPIRB
Garmin fishfinder 100
Liferaft X 6 persons serviced April 2019
Safety equipment for six persons.
Grab bag includes flares, hand held VHF, hand held GPS.
3 X 100AH 12v Gel House batteries.
95AH 12 V engine start battery.
Victron Pallas battery charger.



Contact

LEINSTER BOATS DUBLIN OFFICE

Address:

NYB Dublin Leinster Boats.ie 5 Doonanore Park, Dun Laoghaire, County Dublin, Ireland. A96X4W9

Principal Broker: Ronan Beirne

Telephone: 0862543866 Outside Ireland +00353 86 2543866

Email: info@nybdublin.com

Disclaimer : Leinster Boats offers the details of this vessel for sale but cannot guarantee or warrant the accuracy of the information contained in the specification or warrant the condition of the vessel or equipment. A buyer should instruct his agents, or surveyors, to investigate such details as the buyer desires validated. This vessel is offered for sale subject to no prior sale, price change, or withdrawal without notice.

