

# Wauquiez Chance 37



YEAR 1973 | €19,500 | VAT PAID | DUBLIN OFFICE



# Summary

**Manufacturer:** Wauquiez Chance 37

**Price:** €19,500

**Location:** Dublin

**Year:** 1973

**ID no.:** 30112

## DIMENSIONS

- **LOA:** 36' 11" (11.25m)
- **Beam:** 10' 5" (3.18m)
- **Draft:** 6' 0" (1.83m)
- **Keel:** Fin keel

## ACCOMMODATION

- **Berths:** 7
- **Cabins:** 2
- **Heads:** 1
- **Showers:** 1

## PERFORMANCE

- **Top Speed:** 7
- **Cruising Speed:** 6

## TANKAGE

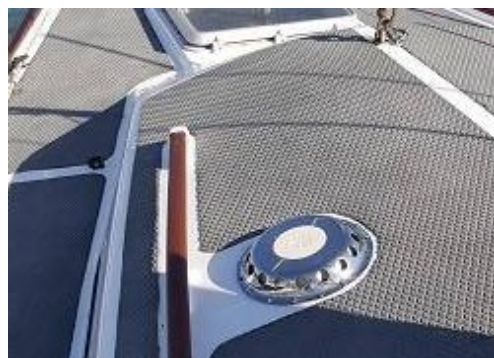
- **Fuel:** Diesel
- **Fuel Tank Size:** 50 Gallons
- **Water Tank Size:** 50 Gallons

## MACHINERY

- **Engine Make:** Volvo 2003 3 cyl
- **Horsepower:** 25
- **Drive Type:** Shaft drive

## OTHERS

- **Aircon:**
- **Heating:** Eberspacher

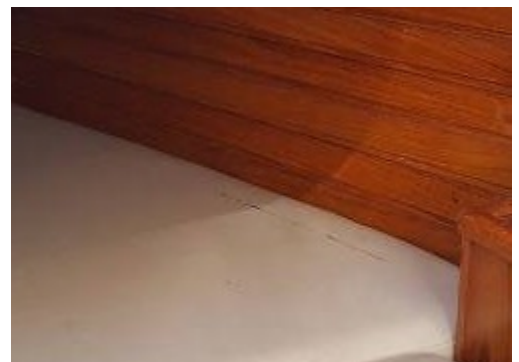


# Wauquiez Chance 37

## Broker Remarks

A classic sloop built by Henri Wauquiez with encapsulated lead keel. Quality shipwright interior joinery defines this yacht as a yacht of character and comfort.

Six berths with full head room. Forward cabin with two V berths and main saloon with galley to starboard and navigation station to port. This yacht has been lovingly maintained with all works done professionally and is a yacht of beauty and character. Viewing will not disappoint. Located c 20 minutes from Dublin Airport.



## Accommodation

Main saloon with drop leaf table aft of thro' deck main mast.

Two settee berths with timber lee boards.

Two pilot berths outboard of settee berths.

One quarter berth on port side.

Recent re-upholstery in cream leatherette.

Overhead grab rails.

Galley to starboard.

Two ring Plastimo Neptune 2000 gas cooker, light use.

SS sink with water supply.

Chest fridge.

Ample work top space.

Navigation station to port, forward facing.

Chart drawer under table.

Storage shelving for navigator items.

Heads forward to main bulkhead with wash basin and shower.

Hanging and storage locker opposite.

Two berth fore cabin with storage shelving and timber batten lining.

Escape and ventilation fore hatch.

Eberspacher heating.



# Mechanical and Rigging

Vovlo 3 cylinder diesel

Shaft drive to two blade Gori folding prop.

Three batteries, 2 X 110 Ah domestic & 1 starter 100 Ah.

Selector switch.

Charged by engine alternator.

Furlex Profurl for genoa.

Fully battened main.

Genoa

1, 2 & 3 headsails.

Spinnaker.

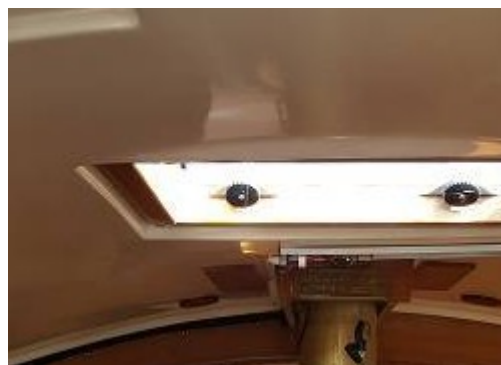
Genneker

Ghoster

Spinnaker pole.

Jockey pole.

Adjustable back stay.



CQR anchor with 42m chain 8mm & 10m warp.

Second CQR and chain.

Fortress FX 16 chain & warp.

2 X Anderson 52's three speed primary winches.

1 X deck mounted Barient 22

1 X Barient 16

1 X Barient 16 mast mounted.

3 X fire extinguishers.

1 X fire blanket.

2 X Horseshoe buoys.

2 X safety lights.

1 X dan buoy.

Cannister liferaft X 6

McMurdo EPIRB.

Zodiac dinghy & oars.

Yamaha 2.5 HP outboard.

Manual gusher bilge pump.

Electric bilge pump.

Portable pump.

VHF Sailor GMDS C 4901

Simrad CR40 plotter.

Simrad CR40 GPS.

Data line wind speed.

Stowe depth sounder.

Simrad TP30 tiller pilot.

Mast head antenna

Giro compass.

2 X Plastimo bulkhead compass's

Sestrel handheld navigators compass.

Secondary Radio with emergency antenna.

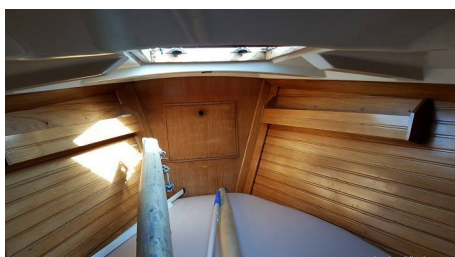
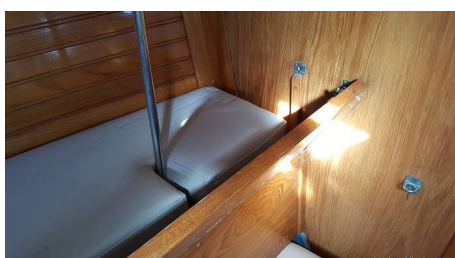
AM/FM radio with CD.

VHF DSC

Navtex Pro-F

Assorted fenders & mooring warps.

Boathook



# Contact

## LEINSTER BOATS DUBLIN OFFICE

**Address:**

NYB Dublin Leinster Boats.ie 5 Doonanore Park, Dun Laoghaire, County Dublin, Ireland. A96X4W9

Principal Broker: Ronan Beirne

**Telephone: 0862543866 Outside Ireland +00353 86 2543866**

**Email:** [info@nybdublin.com](mailto:info@nybdublin.com)

Disclaimer : Leinster Boats offers the details of this vessel for sale but cannot guarantee or warrant the accuracy of the information contained in the specification or warrant the condition of the vessel or equipment. A buyer should instruct his agents, or surveyors, to investigate such details as the buyer desires validated. This vessel is offered for sale subject to no prior sale, price change, or withdrawal without notice.

