

Nauticat 33 Mk2

YEAR 1987 | £59995 | POOLE OFFICE



Summary

Manufacturer: Nauticat 33 Mk2

Price: £59995

Location: Poole OFFICE

Year: 1987

ID no.: 2975

DIMENSIONS

- **LOA:** 33' 2" (10.10m)
- **Beam:** 10' 8" (3.26m)
- **Draft:** 5' 3" (1.6m)
- **Keel:** Long keel

ACCOMMODATION

- **Berths:** 6
- **Cabins:** 2
- **Heads:** 2
- **Showers:** 1

PERFORMANCE

- **Top Speed:** 8
- **Cruising Speed:** 6

TANKAGE

- **Fuel:** Diesel
- **Fuel Tank Size:** 274 Litres
- **Water Tank Size:** 250 Litres

MACHINERY

- **Engine Make:** Ford Lehman Super 90
- **Horsepower:** 90
- **Drive Type:** Shaft drive



Nauticat 33 Mk2

Broker Remarks

POLAR BEAR II OWNERS COMMENTS

During my 17 years ownership of Polarbear II, I have progressively updated any onboard fitments that I thought needed replacement. These included fitting a Garmin Echomap 90 chart plotter, Garmin Reactor 40 auto pilot+ renovation of the associated hydraulic steering system, Navman 7200 VHF radio, Sterling 4 digital battery charger, Vetus polymer fuel tanks, & the majority of the onboard circuit breakers. Previously the hull had been treated with an epoxy resin coating, as underwater protection against osmosis.

The Ford Lehman 90hp long stroke, slow revving engine has only accumulated 1350 running hours to date. The engine offers an extremely economic fuel consumption of 5.5 litres/hour when running at 1450 RPM.

The spacious wheel house gives good all round visibility & is provided with a sizeable chart table, in addition to seating 5 adults. This vessel also provides the option of dual steering. The main saloon, incorporates a lengthy fore & aft galley. The large dining table can easily be converted to an additional double berth. Throughout the enclosed living area, including the fore & aft cabins, the headroom ranges between 1.75m -1.85m.

carefully looked after during the past 17 years under my ownership & as such I consider it to be worthy of viewing by any potential buyer, seeking a versatile sailing vessel, offering the owners with the addition option of a floating holiday home.

REASON FOR SELLING As our family has now grown up & gone their own way, we are now seeking a change to a power craft.



Accommodation

Aft Cabin

Foreward Cabin

Galley

Cooker with Oven and 3 Burners

Fridge

Double Sink

Mechanical and Rigging

Powered by the Ford Lehman Super 90 giving a respectable 6Knts cruising speed with two tanks holding 137 Litres each giving a total fuel capacity of 274 Litres.

3 Blade 22" Dia Bronze prop with rope cutter and a Vetus bow thruster

2 12V/145AH Batteries charged by both engine alternator and a 240V Sterling digital charger

Pressurised hot and cold water

Rigging

Selden Spars, with the standing rigging replaced in 2014

In Mast Furling

Furling Jib

2 x Genoa self tailing 2 speed winches

2 x Halyard winches

Sails

Genoa (New UV Strips)

No1 Jib (New UV Strips)

Main Sail

Mizzen Sail

Anchors

66Lb Plough Anchor

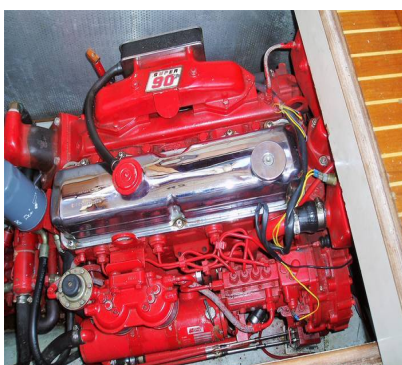
Danforth Kedge Anchor

20 Metres 8mm Chain

Manual Windlass, wired for power windlass



Gas Detector
Boarding Ladder
Horn
Bilge Pumps (Manual & Electric)
Fenders
Boathook
Plastimo Compass
Stowe Speed
Stowe Wind
Clipper GPS (2016)
Garmin Plotter (2016)
Seafares Echo Sounder
Sum Log
Raytheon R10X Radar
Navman DSC VHF
Cetrek 727 Autopilot
Electric Hook Up
2 x Horseshoe Lifebouys



Contact

YACHTS.CO Poole International

POOLE OFFICE

Address:

YACHTS.CO Poole International Cobbs Quay Marina Woodlands Avenue Poole BH15 4EL

***Telephone:* 01202 669554**

***Email:* poole@yachts.co**

