

Raider Raider Fisherman

YEAR 2008 | £12,950 | NEYLAND OFFICE



Summary

Manufacturer: Raider Raider Fisherman

Price: £12,950

Location: Neyland OFFICE

Year: 2008

ID no.: 2339

DIMENSIONS

- **LOA:** 18' 0" (5.49m)
- **Beam:** 7' 0" (2.13m)
- **Draft:** 1' 2" (0.36m)
- **Keel:**

ACCOMMODATION

- **Berths:**
- **Cabins:** 0
- **Heads:** 0
- **Showers:** 0

PERFORMANCE

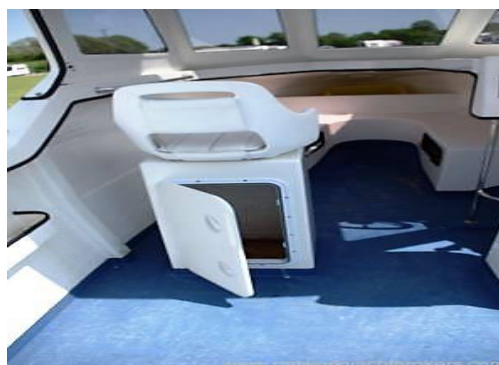
- **Top Speed:** 38 Knots
- **Cruising Speed:** 30 Knots

TANKAGE

- **Fuel:** Petrol
- **Fuel Tank Size:** 10 Gallons
- **Water Tank Size:** 0

MACHINERY

- **Engine Make:** Marnier
- **Horsepower:** 135
- **Drive Type:**



Raider Raider Fisherman

Broker Remarks

The Raider 18 Fisherman, built by Raider Boats, is an out and out fishing vessel. With a reputation of a strong hull being able to work miles from shore. Her shallow draft also allows anglers to fish shallow banks and reefs and is ideal on river and estuary waterways as well as coastal hopping. With a Mariner 135 2 Stroke outboard she will get you to the best fishing ground in record time. The thoroughbred of the fishing fleet this boat has been built to fish!



Mechanical and Rigging

Engine

Mariner 135 Petrol 2-Stroke

Well serviced and with approximately 100 hours

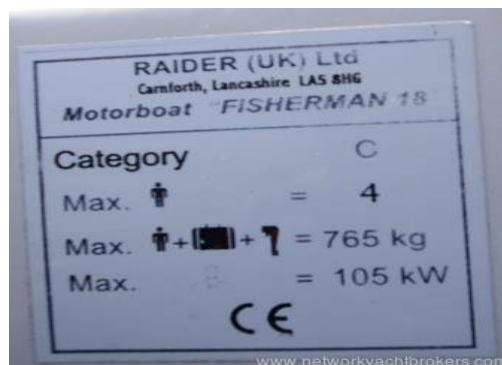
Wheel steering with non feedback steering system

2 x 5 Gallon fuel tanks

Construction

This makes for a lighter, stronger boat that will absorb mechanical shock far better than conventional materials. During lamination, the cloth is overlapped by 8" on the keel and bilges, giving double thickness and greater strength.

The decks and cabin lockers are bonded into place whilst the hull is in the mould. This holds the hull in shape and provides correct stress loading throughout, both prior to being released and from then on.



On Deck

Full head height walk in wheel house with toughened safety glass giving a covered helm position.

Swivel helm and companion seats with stowage below each seat.

Forward covered cabin area with bench seating with hatch access for fore deck.

52 square feet of open cockpit floor gives plenty of work space.

Mid ship and stern cleats

Stainless steel hand rails

Manual bilge pump

Cuddy lockers

2 x Side storage lockers

Bracket for auxiliary engine

Numerous rod holders

Anchor with chain and warp

Navigation

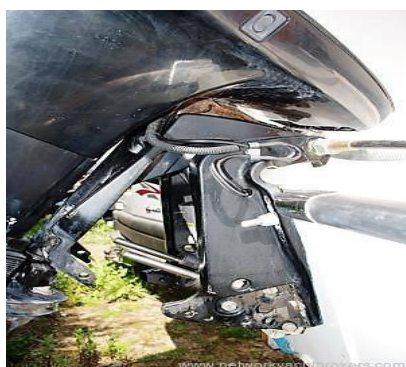
Garmin 500 Chart Plotter

VHF with DSC

Trailer

Braked twin axle

Recently serviced



Contact

**Pembrokeshire Cruising Ltd t/a Network Yacht
Brokers Neyland**

NEYLAND OFFICE

Address:

Network Yacht Brokers Neyland Neyland Marina Brunel Quay Neyland Pembrokeshire SA73
1PY

***Telephone:* [+44] [0] 1646 278270**

***Email:* info@nybneyland.co.uk**

