

Hallberg Rassy Hallberg



YEAR 1984 | £115,000 | VAT PAID | NYB LEFKAS OFFICE



Summary

Manufacturer: Hallberg Rassy Hallberg

Price: £115,000

Location: Nyblefkas

Year: 1984

ID no.: 22130

DIMENSIONS

- **LOA:** 49' 0" (14.94m)
- **Beam:** 14' 5" (4.39m)
- **Draft:** 7' 3" (2.2m)
- **Keel:** Fin keel

ACCOMMODATION

- **Berths:** 7
- **Cabins:** 3
- **Heads:** 2
- **Showers:** 2

PERFORMANCE

- **Top Speed:**
- **Cruising Speed:**

TANKAGE

- **Fuel:** Diesel
- **Fuel Tank Size:** 765 Litres
- **Water Tank Size:** 1400 Litres

MACHINERY

- **Engine Make:** Volvo MD40
- **Horsepower:** 85
- **Drive Type:** Shaft drive

OTHERS

- **Aircon:**
- **Heating:** Eberspacher cabin heating



Hallberg Rassy Hallberg

Broker Remarks

This **Hallberg Rassy 49** is an excellent example of these true blue water classics. Well cared for by her long term owners with new decks 2006 and many more upgrades.

Sleeps 7. Master cabin with double berth plus single berth and en-suite head. Forward guest cabin with double berth. Starboard guest cabin with twin berths. Saloon-dinner 8 people . Re upholstered 2009 to match original. This is the ketch version and owners have found that the rig is very flexible in all sea conditions and well suited to short handed cruising.

She is British registered - Part 1

VAT Paid



Accommodation

ACCOMMODATION

Number of single berths: 6

Number of twin berths: 2

Number of double berths: 1

Number of cabins: 3

Number of heads: 2

Number of bathrooms: 2

SALOON: L-shaped sofa berth to starboard with large drop leaf table on the centreline, opening centre section for bottle storage. Storage behind backrests with pilot berth to starboard. Bookshelf and cupboards to port with Stereo, TV, brass reading lamps, clock, barometer, scatter cushions.

GALLEY: To starboard of companionway with double stainless steel sink, hot and cold pressurised water as well as manual pumped fresh and sea water. Gimballed 4 burner, and large oven. Ready to use storage above and below work surfaces. Pots and pans stowage beneath cooker and drawers for cutlery. Large fridge under galley work top, second smaller fridge on port side.

CHART TABLE: Storage for charts beneath table and in specially designed chart lockers. Seating with storage below. Navigation and communication instruments on panel in front of table. Switch panel and circuit breakers aft of seat, along with locker and hanging lockers. Opposite these lockers is access to engine room in the walk through to aft cabin.

AFT CABIN: One double berth to starboard with single berth to port which is ideal into a passage making berth. Hanging locker and bureau with drawers. Lockers port and starboard above berth. Storage beneath. BLAUPUNKT stereo, radio cassette player. 1 opening skylight and three opening portlights. Headroom 6'4" or 1.93 m.

AFT HEADS COMPARTMENT: Separate shower stall with teak grating. 2 opening portlights. Lockers above and below porcelain wash basin. Mirror. Baby Blake sea toilet.

FORECABIN: Two berths length 6'9" or 2.05m. Large sail locker beneath. Lockers above and below as well as hanging locker. Opening skylight and portlight. BLAUPUNKT stereo, radio, cassette player.

SB FORE CABIN: Twin berth cabin (pullman)
stowage beneath lower berth. hanging lockers
and opening skylight.

FORWARD HEADS COMPARTMENT: Blakes
toilet with 130 litre waste tank , separate
shower stall, porcelain wash basin mirror and
storage lockers above and below. Teak grating
and opening skylight.

Mechanical and Rigging

DIMENSIONS

LOA: 49 ft 1 in

Beam: 14 ft 6 in

LWL: 41 ft 0 in

Minimum Draft: 7 ft 3 in

Maximum Draft: 7 ft 3 in

Displacement: 18000 kgs

Ballast: 8100 kgs

ENGINE

Volvo Penta MD 40 84hp engine

Prop- 3 blade bronze

Generator: Northern Lights M643 5 KW (Diesel)

Bow thruster Vetus Bow 16024A, 160KGF

DECK

Centre cockpit with Hallberg-Rassy with fixed wind screen

Teak laid to all decks NEW 2006

Solid teak cap rail and handrails NEW 2006

WINCHES

Cockpit

2x Lewmar CEST 66 Electric Primary winches

2x Lewmar CST 43 mainsheet winches

2x Lewmar C 65 Spinnaker winches

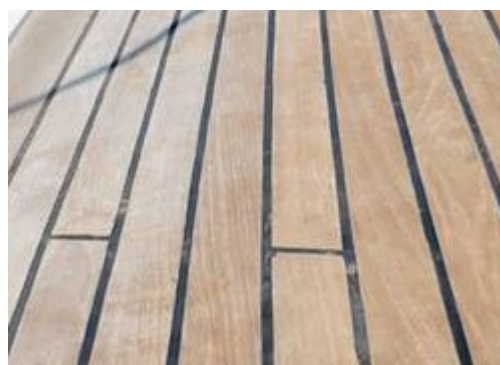
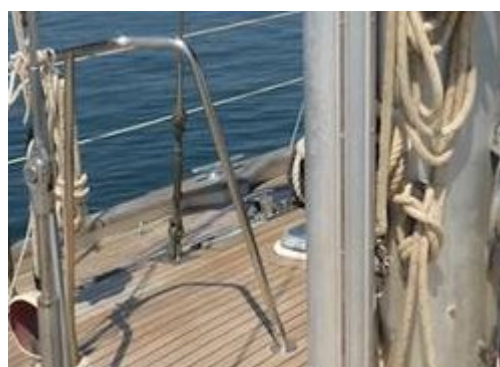
Main mast

1x Lewmar cst 46 halyard winch

2x Lewmar cst 43 Halyard winches

1x Lewmar c 16 reefing winch

1x Lewmar c8 Pole control winch

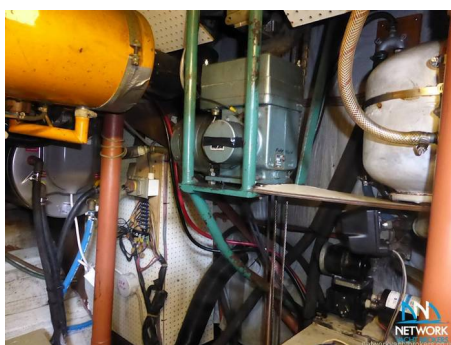
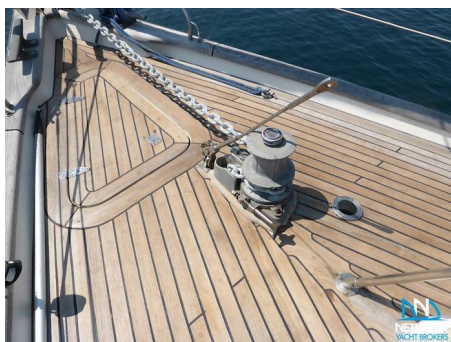


Mizzen mast

1x Lewmar cst 40 Halyard winch

1x Lewmar cst 16 Halyard winch

1x Lewmar c8 Reefing winch



Contact

**GREEK YACHT SALES LTD. T/A NETWORK YACHT
BROKERS LEFKAS**

NYB LEFKAS OFFICE

Address:

Network Yacht Brokers Lefkas Cleopatra Marina Preveza 48100 Ionian Islands Greece

Telephone: UK+ 44 203 051 0525 / Mob.+306945347870

Email: info@nyblefkas.com

Disclaimer : Greek Yacht Sales Ltd. t/a Network Yacht Brokers Lefkas offers the details of this vessel for sale but cannot guarantee or warrant the accuracy of the information contained in the specification or warrant the condition of the vessel or equipment. A buyer should instruct his agents, or surveyors, to investigate such details as the buyer desires validated. This vessel is offered for sale subject to no prior sale, price change, or withdrawal without notice.

