



Bavaria Yachts Bavaria

YEAR 2008 | €53,950 | VAT NOT PAID | CORFU OFFICE



Summary

Manufacturer: Bavaria Yachts Bavaria

Price: €53,950

Location: Corfu

Year: 2008

ID no.: 2181

DIMENSIONS

- **LOA:** 32' 0" (9.76m)
- **Beam:** 11' 1" (3.38m)
- **Draft:** 6' 2" (1.87m)
- **Keel:** Fin keel

ACCOMMODATION

- **Berths:** 4
- **Cabins:** 2
- **Heads:** 1
- **Showers:** 2

PERFORMANCE

- **Top Speed:**
- **Cruising Speed:**

TANKAGE

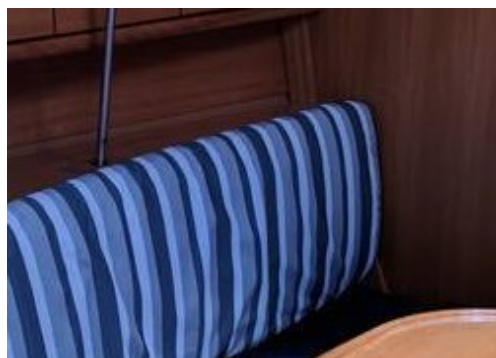
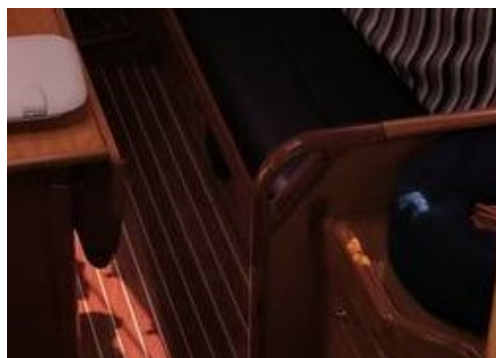
- **Fuel:** 0
- **Fuel Tank Size:** 90 Litres
- **Water Tank Size:** 155 Litres

MACHINERY

- **Engine Make:** Volvo Penta
- **Horsepower:** 18
- **Drive Type:** Saildrive

OTHERS

- **Aircon:**
- **Heating:**



Bavaria Yachts

Bavaria

Broker Remarks

Bavaria 31 cruiser for sale by NYB Corfu, this 2008 yacht has been in charter and has been very well maintained, with all the running rigging and Sails being renewed in 2016. This yacht is perfect for a Couple or small family. Because all lines lead to the cockpit it is easy to sail this yacht. The sheet lines leads to the steering wheel position. The drop down rear platform gives easy access to the generous cockpit and easy access to the swim ladder.

All our boats for sale or purchased through Network Yacht Brokers, Corfu in Gouvia Marina have the option/benefit of being placed into a full Maintenance Program, Management or general servicing through our affiliated partner - Sail the Blue Yachting.

Part Exchange Considered & Finance Available. For more information visit www.nybcorfu.com



Accommodation

2 Double Cabins

Additional berths in saloon if required

Manual bilge pump

Auto bilge pump

Cooker with oven

Refrigerator

Marine head

Electric bilge pump

Electrical Circuit 220v

Mechanical and Rigging

Chart Plotter

Log-speedometer

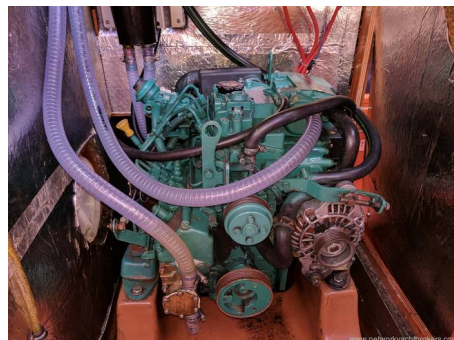
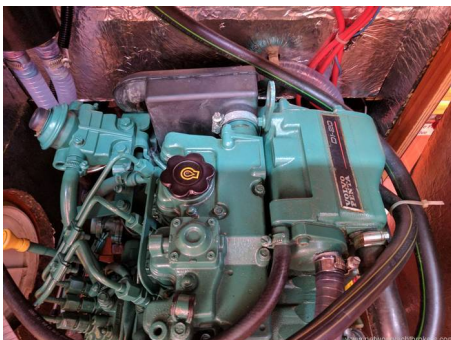
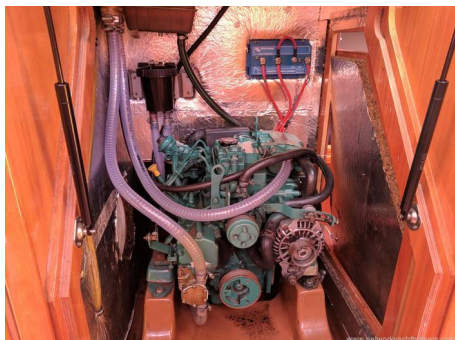
VHF Radio DSC

Depth sounder

GPS - Garmin



Teak cockpit
Cockpit table
Cockpit shower
Swimming ladder
Spray hood
Bimini Top



BAVARIA 31 CRUISER

Never a company to let success stand in the way of development, Bavaria has replaced one of its most popular models, the Bavaria 30 Cruiser with the Bavaria 31 Cruiser. More interior volume with additional opening deck hatches and larger ports enhance light access and natural ventilation. Strategically placed on the cabin top and cockpit coaming, additional winches make sail handling even easier. An electric hatchway flap provides access to the hatch-covered swim platform, and an easily adjusted masthead traveler allows for better managing of the boat's sail. Adding these elements, all while maintaining superior performance and boat handling, has served to help make Bavaria an industry standard. To accommodate these new features, no wonder Bavaria had to make the latest addition 31' 0" L.O.A.

- Above deck, the 31 Cruiser boasts four cockpit side and main, a double overhead side and main, and choice of convenient, long or fully battened inboard included in the base boat price.
- A gimballed two-burner propane stove with oven, an oven with 12V refrigerator unit, a stainless steel sink and storage for pots and pans enhance the usability of the 31 Cruiser's galley galley.
- Both cabin have double berth and ample shelf and closet space.
- The deck opening ports, four opening hatches and two large fixed ports provide the 31 Cruiser with plenty of natural light and ventilation.
- The spacious head has a epoxy-coated surface, a hanging locker for toilet waste, and multiple opening ports and hatches.
- The comfortable salon has ample seating, a chart table with storage space for charts and instruments, and varnished light mahogany woodwork throughout the entire boat.

BAVARIA YACHTS
German engineered, sailor inspired.

Contact

YACHTS.CO INTERNATIONAL LTD T/A NETWORK YACHT BROKERS CORFU CORFU OFFICE

Address:

Network Yacht Brokers - Corfu Sail the Blue, Gouvia Marina, Corfu, Greece

Telephone: 00(44)1792 209204

Email: info@nybcorfu.com

Disclaimer : Yachts.co International Ltd t/a Network Yacht Brokers Corfu offers the details of this vessel for sale but cannot guarantee or warrant the accuracy of the information contained in the specification or warrant the condition of the vessel or equipment. A buyer should instruct his agents, or surveyors, to investigate such details as the buyer desires validated. This vessel is offered for sale subject to no prior sale, price change, or withdrawal without notice.

