

Jeanneau Jeanneau Sun

YEAR 1999 | £45,000 | DARTMOUTH OFFICE



Summary

Manufacturer: Jeanneau Jeanneau Sun

Price: £45,000

Location: Dartmouth OFFICE

Year: 1999

ID no.: 171473

DIMENSIONS

- **LOA:** 36' 1" (11.00m)
- **Beam:** 12' 2" (3.71m)
- **Draft:** 6' 3" (1.91m)
- **Keel:** Fin keel

ACCOMMODATION

- **Berths:** 6
- **Cabins:** 3
- **Heads:** 1
- **Showers:** 1

PERFORMANCE

- **Top Speed:**
- **Cruising Speed:**

TANKAGE

- **Fuel:** Diesel
- **Fuel Tank Size:** 150 Litres
- **Water Tank Size:** 323 Litres

MACHINERY

- **Engine Make:** Volvo
- **Horsepower:** 40
- **Drive Type:** Shaft drive

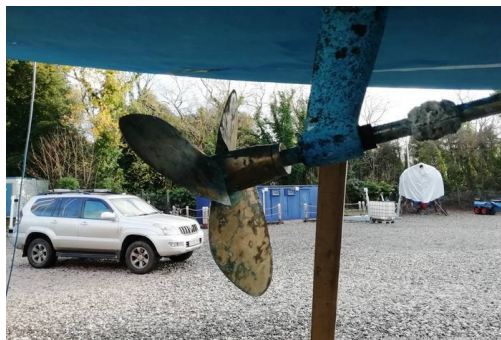


Jeanneau Jeanneau Sun

Broker Remarks

Jeanneau Sun Odyssey 36.2 for sale. The Jeanneau Sun Odyssey 36.2 offers lots of creature comforts and is well suited for coastal cruising and offshore passage making. A slippery hull designed by Jeanneau's in-house team and led by French designer Jacques Fauroux. Large cockpit with removable seat at the stern that opens to a scooped transom with swim step and stainless steel boarding ladder. ANAM CARA has very generous accommodation with open and spacious L shaped galley and oodles of lounging space in the saloon. Quite a few significant updates recently including replacemnet standing rigging in 2017.

In case you were wondering ANAM CARA is an old gaelic term for 'Soul Friend'. A lovely boat and well presented, and should be seen sooner rather than later.



ACCOMMODATION

**Sleeps 6 in 2 double and 2 single berths
in 3 cabins including saloon**

- Eberspacher Airtronic D4 diesel cabin heating
- 4 x Goit deck hatches
- 2 x Goit deck vents
- Teak and holly cabin sole
- Cherry wood interior joinery

Galley (*starboard*):

- L-shaped
- Mariner 4- burner hob, grill and oven
- Top loading refrigerator
- Cupboards above and beneath worktops
- Opening portlight with cover

Saloon:

- U shaped seating (*starboard*)
- Settee berths (*port and starboard*)
- Stowage under and behind settees
- Cupboards
- Portlights with covers
- Chart table (*port side*), forward facing, with Navigation instruments, VHF and switchboard. Full

sized chart stowage, cupboard beneath and stowage under seat

Foreward Cabin:

- Double V berth
- Open shelving above berth (*port and starboard*)
- Handbasin with pressurised hot and cold water
- Cupboard for stowage under and above handbasin
- Under berth stowage
- Skylight / deck hatch with blind

Aft Cabin (*starboard*):

- Large double berth
- Under berth stowage
- Hanging locker
- Open shelving
- Opening portlight to cockpit, with cover
- Opening hull portlight with cover

Heads (*port*):

- Jabsco sea water marine toilet
- Stowage above
- Moulded hand basin with mixer tap
- Mirror
- Hand basin
- Stowage above and under hand basin
- 2 x opening portlights with covers
- Separate shower cubicle
- Wet locker

CONSTRUCTION, MECHANICAL AND RIGGING

Jeanneau Sun Odyssey 36.2 built in 199 by Jeanneau, France. Designed by Jacques Fauroux

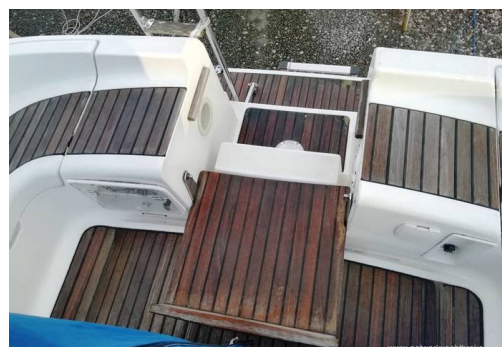
- Deep cast iron keel with bulb
- White GRP hull, deck and superstructure
- Teak laid cockpit sole
- Teak laid cockpit seating
- Teak laid bathing platform
- Teak grabrails
- Whitlock rod wheel steering
- Hull epoxy coated (2014)
- **Anam Cara** is an old Gaelic term for "soul friend"

Engine:

- Volvo Penta MD2040, 40hp diesel engine
- Fresh water cooled
- Shaft drive
- Max prop feathering 3 - bladed propeller
- Spare fixed pitch 2- bladed propeller
- Cutlass bearing (2013)

Electrical:

- 12v system
- 3 x 12v 110Ah batteries (2 x domestic, 1 x engine start)
- Adverc battery management system (2010)
- Cristec Nemo 25 battery charger
- Charging from 90Ah engine alternator
- BEP marine voltage sensitivity Relay Module
- 240v shorepower
- Shorepower cable
- 3 x 240v sockets in saloon
- Mix of LED and florescent lighting
- 40w trickle feed solar panel



Navigation Equipment:

- Raymarine SL 70C radar/ plotter
- Autohelm Navcentre 600 LCD GPS/ plotter
- Raytheon ST60 wind/ Depth/ speed
- Raytheon St5000+ autopilot
- Icom IC-M505 DSC VHF radio, command mic for cockpit
- Plastimo steering compass

Anchoring and Mooring Equipment:

- 35 lb CQR anchor, anchor connector replaced (2014)
- 27m x 8mm chain and 12m warp
- Lofrans electric anchor windlass
- Stainless steel bow roller
- Aluminium mooring cleats foreward, amidships and aft
- Warps
- Fenders
- Boathook

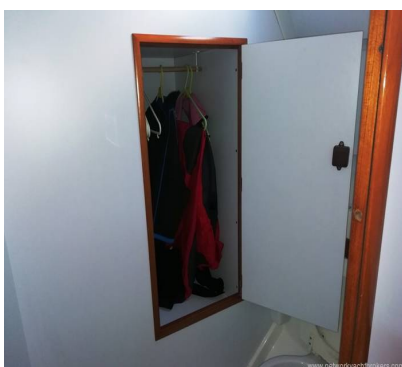
General Equipment:

- Stainless steel boarding ladder
- Transom shower
- Sprayhood with stainless steel frame
- Dodgers with boat name
- 5 x cockpit cushions
- Cockpit table
- Outboard engine bracket
- Radio/ CD player and speakers
- Glomex TV antenna
- Glomex amplifier/ TV signal booster
- TV/DVD mounting bracket (*port side*)

Safety Equipment:

- Stainless steel pushpit, pulpit and guardwire
- Plastimo 4- person liferaft
- Horseshoe lifebuoy with light
- Webbing jackstays / lifelines
- Emergency tiller

- Navigation lights
- Radar reflector
- Fire blanket
- Fire Extinguishers



Contact

EQ Marine Ltd t/a Network Yacht Brokers Dartmouth

DARTMOUTH OFFICE

Address:

Network Yacht Brokers Dartmouth, Noss on Dart Marina Bridge Road Kingswear Dartmouth TQ6 0EA

***Telephone:* 01803 834864**

***Email:* sales@nybdartmouth.com**



NETWORK

JEANNEAU JEANNEAU

www.networkyachtbrokers.com

