

Westerly Westerly Konsort



YEAR 1982 | £6,000 | VAT PAID | DARTMOUTH OFFICE



Summary

Manufacturer: Westerly Westerly Konsort

Price: £6,000

Location: Dartmouth

Year: 1982

ID no.: 171470

DIMENSIONS

- **LOA:** 28' 10" (8.80m)
- **Beam:** 10' 10" (3.29m)
- **Draft:** 3' 3" (0.98m)
- **Keel:** Bilge Keel

ACCOMMODATION

- **Berths:** 7
- **Cabins:** 3
- **Heads:** 1
- **Showers:** 0

PERFORMANCE

- **Top Speed:** 6.5 knots
- **Cruising Speed:** 5 knots

TANKAGE

- **Fuel:** Diesel
- **Fuel Tank Size:** 67 Litres
- **Water Tank Size:** 135 Litres

MACHINERY

- **Engine Make:** Bukh
- **Horsepower:** 24
- **Drive Type:**

OTHERS

- **Aircon:**
- **Heating:**



Westerly Westerly Konsort

Broker Remarks

Westerly Konsort 29 for sale. The Westerly Konsort 29 was Laurent Giles last design project for Westerly Yachts and also their most successful, excepting the Centaur of course.

The interior layout is traditional with forecabin/heads/saloon/galley and chart-table arrangement. So plenty of stowage and wide berths. The saloon has a fixed table with flaps and bottle stowage.

This is an extremely popular, safe family cruiser that is equally at home crossing the channel or exploring creeks. A sea kindly boat that has been well maintained. This Westerly Konsort 29 is fully equipped and ready to sail.

STRING OF PEARLS benefits from a replacement engine, installed about 10 years ago and modified 2 years ago for easier starting. The rigging was replaced 12 years ago and checked in 2011. The sails were replaced 10 years ago.



ACCOMMODATION

Sleeps 7 in 1 single and 3 double berths in 3 cabins including saloon

- Jabsco marine toilet (2015)
- Stainless steel washbasin
- Hanging locker opposite

- Teak interior joinery
- Teak and holly sole
- 6' headroom in saloon

Galley (*to starboard*):

- 2 x burner cooker with oven and grill
- Stainless steel sink
- Ice box

Saloon:

- 2 x linear settees, can be used as single berths, the port berth can be converted quickly to a double
- The seatbacks can be removed to give more width or as lee boards
- Chart Table (*to port*), with chart light and stowage
- Instrument panel

Quarter Berth (*to port*):

- Small double berth
- Stowage under

Forecabin:

- 'V' berth with infill

Heads:

CONSTRUCTION, MECHANICAL AND RIGGING

Built in 1982 by Westerly Boats, to a design by Laurence Giles

- **White GRP hull deck and superstructure**
- **Transom hung rudder**
- **Bilge keels**

Yard #: D327

Sail #: KT447

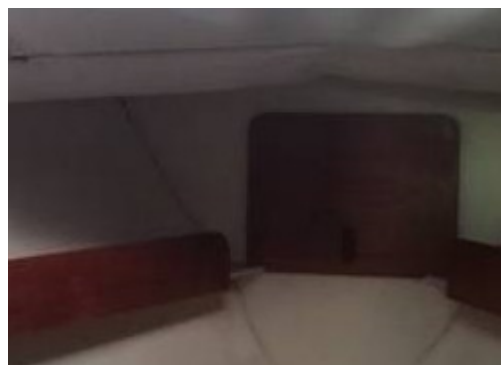
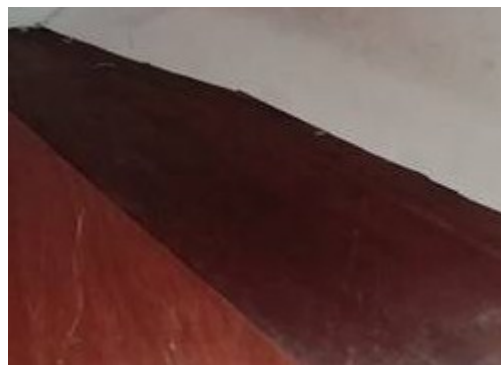
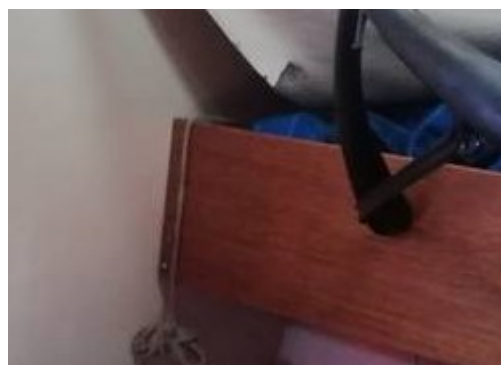
Engine:

- Bukh 24 marine diesel engine
- Last serviced (2017)
- Sea water cooled
- Fuel consumption ½ litre per hour at cruising speed
- Cruising speed approximately 5 knots
- Maximum speed 6.5 knots
- 3 bladed propeller
- Cutlass bearing replaced (2016)

Electrical:

- 12v system
- 2 x batteries (*situated under port rear berth*)
- 3. Charged by engine

Tankage:



- Fuel capacity 67 litres
- Freshwater capacity 135 litres

Water System:

- Manual water system

Rigging:

- Masthead sloop rig
- Stainless steel standing rigging (2006), checked 2011
- Terylene running rigging
- Single spreader
- Deck stepped mast
- Mainsail reefing
- Headsail furling

Sails:

- Crusader sails mainsail (2008)
- Crusader sails genoa (2008)
- Crusader sails jib (2008)

Winches:

- 2 x foresheet winches
- 2 halyard winches

Navigation Equipment:

- GPS wireless navigation covering wind, speed and depth
- Raymarine tiller pilot ST1000+
- Compass
- VHF radio
- Stainless steel pulpit and pushpit
- Stainless steel guard rails
- Self draining cockpit
- Liferaft (needs servicing)
- 2 x lifebuoys
- Radar reflector
- Foghorn
- Manual bilge pump

Anchoring and Mooring Equipment:

- Anchor
- Chain
- Fenders
- Warps
- Boathook

General Equipment:

- Sail cover
- Sprayhood
- Cockpit cushions
- Boarding ladder
- Cockpit table
- Utensils
- Radio
- Barometer
- Avon dinghy

Safety Equipment:



Contact

EQ MARINE LTD T/A NETWORK YACHT BROKERS DARTMOUTH DARTMOUTH OFFICE

Address:

Network Yacht Brokers Dartmouth, Noss on Dart Marina Bridge Road Kingswear Dartmouth TQ6 0EA

Telephone: 01803 834864

Email: sales@nybdartmouth.com

Disclaimer : EQ Marine Ltd t/a Network Yacht Brokers Dartmouth offers the details of this vessel for sale but cannot guarantee or warrant the accuracy of the information contained in the specification or warrant the condition of the vessel or equipment. A buyer should instruct his agents, or surveyors, to investigate such details as the buyer desires validated. This vessel is offered for sale subject to no prior sale, price change, or withdrawal without notice.

