



Otarie Steel Motor

YEAR 1973 | £45,000 | VAT PAID | DARTMOUTH OFFICE



Summary

Manufacturer: Otarie Steel Motor

Price: £45,000

Location: Dartmouth

Year: 1973

ID no.: 171200

DIMENSIONS

- **LOA:** 49' 0" (14.94m)
- **Beam:** 14' 0" (4.27m)
- **Draft:** 5' 6" (1.68m)
- **Keel:**

ACCOMMODATION

- **Berths:** 6
- **Cabins:** 2
- **Heads:** 2
- **Showers:** 1

PERFORMANCE

- **Top Speed:** 9.5 knots
- **Cruising Speed:** 6 knots

TANKAGE

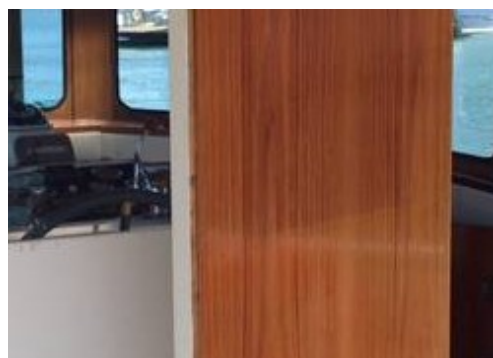
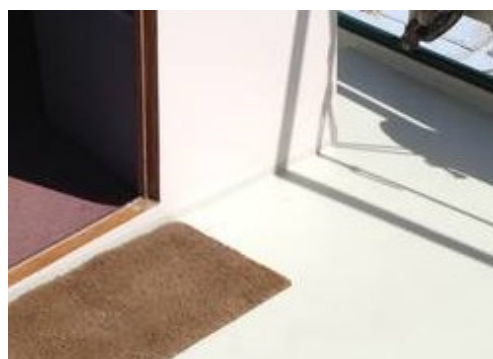
- **Fuel:** Diesel
- **Fuel Tank Size:** 1200 Litres
- **Water Tank Size:** 700 Litres

MACHINERY

- **Engine Make:** DAF 475M
- **Horsepower:** 170
- **Drive Type:** Shaft drive

OTHERS

- **Aircon:**
- **Heating:** Kabola



Otarie Steel Motor

Broker Remarks

This Otarie Class steel motor yacht, ZEEMEEUW is a remarkable boat that would be better described as a small ship. The engineering is first class throughout and the quality of the zinc coated steel is as good as it gets. The previous owner undertook a major extension by building a wheelhouse onto the existing deck where the flybridge and upper helm position originally stood, and this creates the most extraordinary amount of enjoyable living space with a great view.

This boat is ready and capable of going great distances at the drop of a hat, or, ready and capable of offering wonderful space and accommodation as a liveaboard home. We anticipate that her next owner is likely to have a great appreciation of high quality craftsmanship and engineering.



ACCOMMODATION

**Sleeps 6 in 2 double and 2 single berths in
2 cabins**

The interior has 6' 8" head room and is finished in varnished teak with beige upholstery, curtains, blinds insect screens and new carpets (2008)

Kabola 7kw diesel fired cabin heating

Galley has Smev 3-burner gas cooker with oven and grill. Microwave, Fridge, icebox and sink with macerator. All replaced in 2008.

2 Heads compartments one with Blakes lavac marine toilet one with Portaloo.

There is a separate shower cubicle with sink.

CONSTRUCTION, MECHANICAL AND RIGGING

**Otarie Class Steel Motor Yacht. Built by Roam Shipyard
Holland in 1973**

Designed by de Vries Lentsch Jnr

SSR #142064

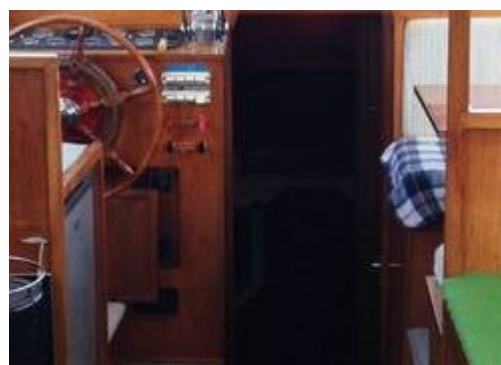
- **Steel displacement hull**
- **Long Keel**
- **Wheel Steering**

Mechanical:

- Powered by 2 x DAF 475M 85 hp 6-cylinder diesel engines
- Fuel polishing system (2008)
- Fresh water cooled (keel coolers 2007)
- Port engine hours to date approximately 4500
- Starboard engine hours approximately 4900
- Range 600 Nautical Miles (+100 in reserve)
- Fuel consumption 1.2 gallons per hour each engine
- Cruising speed 6-6.5 knots
- Maximum speed 9.5 knots
- Borg Warner hydraulic gear boxes with shaft drive
- 3-Bladed fixed pitch propellers
- Morse controls

Electrical:

- 24v system supplied 6 x Victron AGM batteries (domestic 220 ah, each engine 100ah) (May 2013)



- Victron 3kw inverter (2008)
- Victron 3KW Isolation Transformer (2008)
- Mastervolt 24v - 12v volts dropper for some Navigation Instruments (2008)
- Mastervolt battery monitor (2008)
- Victron 60 amp charger (2008)
- Victron 80 amp charger (2008)
- Balmar 150 amp alternator with programmable regulator on starboard engine
- Yamaha EF 300: SE Generator (low running hours)
- Shore power and shore power cable

Tankage:

- Fuel capacity 1200 litres in 4 x steel tanks
- Fresh water capacity 700 litres in 1 x steel tank

Water System:

- Pressurised water system
- Water heated by immersion (240v) or diesel boiler

Rigging:

- Gaff cutter rigged with aluminium spars
- Stainless steel standing rigging, 50% of which has been replaced in last 5 years.
- Terylene running rigging, all replaced in last 5 years
- Mainsail reefing points

Sails:

- Jeckells Gaff Main (2008/9)
- Jeckells Staysail (2008/9)
- Jeckells Big Jib (2008/9)

Navigation Equipment:

- Clipper depth sounder (2008)
- Walker Log/Speed
- Neco 892cu Autopilot
- Garmin 172 C GPS (2008)
- AIS Radar detector (2008)
- Icom M421 VHF (2008)
- Standard HX 220 Uk , portable (1990)
- Maxsea 22" screen plotter (2008)
- Sestral Major Compass (1990)
- ICS NAV6 Navtex

Anchoring and Mooring Equipment:

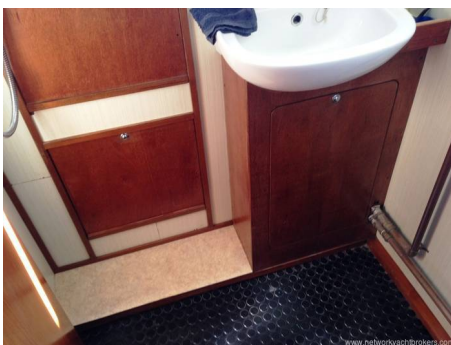
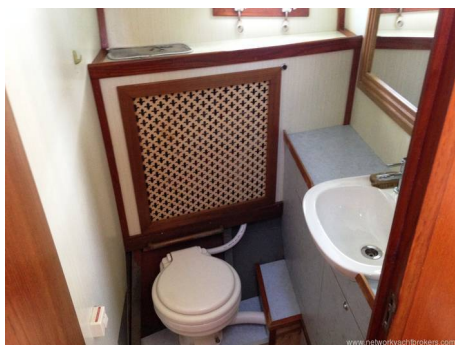
- CQR 120 lbs anchor with 28 fathoms 3/8th chain
- CQR 45 lb anchor with 25' 1/2 " chain and 125' warp
- 400' assorted warps
- Simpson Lawrence manual windlass

General Equipment:

- Cutlery, crockery and utensils
- Clock and Barometer
- Television
- 2hp Yamaha outboard
- Cockpit cushions
- Manual gangway
- Manual davits
- GRP 2 position rowing dinghy and lug sail
- Warps, fenders and boathook
- 3 x Original 'Grabit' hooks
- 2 x Vacuum cleaners
- 1 x Folding bicycle
- Engineering tools for complete engine overhaul
- Electric test meter
- Tools and spares
- Plumbing tools
- Mainsail cover
- Bimini
- Electric kettle (2008)
- 2 metre fibreglass tender

Safety Equipment:

- Navigation lights and Masthead light
- Deck and steaming lights
- Electric and manual bilge pumps
- 2 x Life buoys
- 4 x Life jackets
- Searchlight
- Pulpit, pushpit and guardrails
- Flares
- Horn
- Fire Blanket
- 2 x Fire Extinguishers (Co2 2006, 6kg powder, 2010) next service 2015



Contact

EQ MARINE LTD T/A NETWORK YACHT BROKERS DARTMOUTH DARTMOUTH OFFICE

Address:

Network Yacht Brokers Dartmouth, Noss on Dart Marina Bridge Road Kingswear Dartmouth TQ6 0EA

Telephone: 01803 834864

Email: sales@nybdartmouth.com

Disclaimer : EQ Marine Ltd t/a Network Yacht Brokers Dartmouth offers the details of this vessel for sale but cannot guarantee or warrant the accuracy of the information contained in the specification or warrant the condition of the vessel or equipment. A buyer should instruct his agents, or surveyors, to investigate such details as the buyer desires validated. This vessel is offered for sale subject to no prior sale, price change, or withdrawal without notice.

