

Coaster Coaster 33

YEAR 1981 | £24,950 | BRIGHTON OFFICE



Summary

Manufacturer: Coaster Coaster 33

Price: £24,950

Location: Brighton OFFICE

Year: 1981

ID no.: 16280

DIMENSIONS

- **LOA:** 33' 0" (10.06m)
- **Beam:** 10' 2" (3.10m)
- **Draft:** 4' 0" (1.22m)
- **Keel:** Long keel

ACCOMMODATION

- **Berths:** 6
- **Cabins:** 2
- **Heads:** 1
- **Showers:** 1

PERFORMANCE

- **Top Speed:**
- **Cruising Speed:**

TANKAGE

- **Fuel:** Diesel
- **Fuel Tank Size:** 364 Litres
- **Water Tank Size:** 340 Litres

MACHINERY

- **Engine Make:** Mercedes
- **Horsepower:**
- **Drive Type:** Shaft drive



Coaster Coaster 33

Broker Remarks

This Coaster 33 Motor-Sailer for sale in Brighton, built by Prior and Son on Malden in 1981, 'Dawn Bird' is a fine example of these high quality, well respected Motor-Sailers. Her well designed hull, long keel, deck equipment and ketch rig makes her easy to sail. With a warm welcoming interior, 2 double berth cabins and an enclosed cockpit, she makes an excellent boat for extended cruising. The Coaster 33 has an abundance of character; to arrange a viewing please contact us further.



Accommodation

The Coaster 33 has excellent standing room throughout, two separate double cabins and a saloon with a practical galley area and a toilet with shower. She provides spacious accommodation for 6 and access to plenty of storage for living aboard.

Wheelhouse

- Leather seat on the helm
- Seating and underneath storage
- Access to aft cabin through small doors
- Access to engine bay underneath 2 floor panels
- Access from either side through canvas

Aft Cabin

- Double berth
- Mirror
- Plenty of storage and light from port holes

Galley

- Dual top stove and oven
- Stainless Sink
- Fridge

Saloon

- Spacious seating area able to seat 8
- Folding and spinning dining table

Head

- Toilet
- Shower
- Mirror

Forward cabin

- Large double berth - benefitting from an extremely comfortable double mattress that has recently been purchased
- Hatch above

Mechanical and Rigging

Mechanical

Dawn Bird has a recently serviced, well maintained, powerful and reliable Mercedes OM636 engine and a completely reconditioned electric windlass gypsy/anchor winch.

Rigging

New fully battened mainsail with inmast reefing
Harken roller reefing furler
Storm Jib with removable stay
Mizzen staysail
Genoa
Spare Jib
Brand new wheelhouse canvas fitted Feb 2018
Anchor windlass
2 winches
Stainless steel davits
One electric and two manual bilge pumps
An emergency tiller
16kg Brittany anchor with 70m of 8mm chain
15kg Meon anchor
2 Lifebuoys
4 man life raft



Navigational

Raymarine radar

Raymarine GPS plotter C70 system

Garmin 12 GPS

New Icom VHF marine

IC-M323G GPS with distress button

Back up hand held radio

She also has a Sestrel Senator Compass

595

Autohelm pilot ST6000

Cetrek 92 hydraulic control

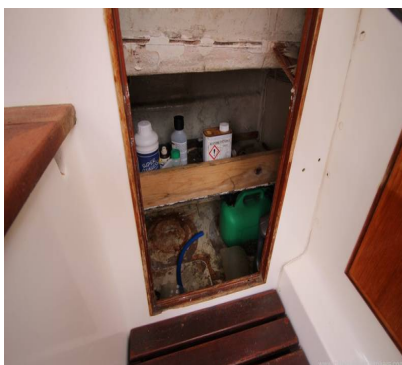
Depth gauge display

Nasa Navtex

New Raymarine wind speed unit

Batteries

She has a brand new Victron Blue Power smart battery charger for the 2 leisure batteries, and she has a separate engine battery.



Contact

**Blackrock Yachting Limited t/a Network Yacht
Brokers Brighton**

BRIGHTON OFFICE

Address:

Blackrock Yachting Ltd 1b East Lockside Brighton Marina Brighton East Sussex BN2 5HA

***Telephone:* 01273 697777**

***Email:* ray@bryachting.co.uk**

