

# Jeanneau Sun Odyssey

YEAR 2011 | €47,950 | BRIGHTON OFFICE



## Summary

**Manufacturer:** Jeanneau Sun Odyssey

**Price:** €47,950

**Location:** Brighton OFFICE

**Year:** 2011

**ID no.:** 16246

### DIMENSIONS

- **LOA:** 29' 6" (8.99m)
- **Beam:** 10' 5" (3.18m)
- **Draft:** 6' 7" (2m)
- **Keel:** Lifting Keel

### ACCOMMODATION

- **Berths:** 4
- **Cabins:** 2
- **Heads:** 1
- **Showers:** 1

### PERFORMANCE

- **Top Speed:**
- **Cruising Speed:**

### TANKAGE

- **Fuel:** Diesel
- **Fuel Tank Size:** 50 Litres
- **Water Tank Size:** 160 Litres

### MACHINERY

- **Engine Make:** Yanmar
- **Horsepower:** 21
- **Drive Type:** Saildrive





# Jeanneau Sun Odyssey

## Broker Remarks

A truly versatile cruiser whose size belies her capabilities. This 30-foot cruiser is remarkable for what she has to offer. The interior volume and comfort levels are combined with all the classic features of Jeanneau's Sun Odyssey range and result in a capable and comfortable family cruiser all packed within a 30' hull. This example is fitted with a lifting keel, has only been lightly sailed and is in excellent condition throughout.



## Accommodation

Fine Teak laminated panels with solid wood trim around galley, companionway and cabinetry, finished in satin UV stabilised varnish

- Laminate floorboards laminated floorboards with light-coloured lines and sealed edges Forward cabin with V-berth
- Double berth with high-density foam mattress (2.1m x 1.82m)
- Storage locker under berth
- Cabinet with hanging rod • Wide, bi-fold door for easy access
- Vinyl lining on hull with lateral wood shelf

Aft cabin

- Double berth with high-density foam mattress (1.92m x 1.4m)
- Deep cabinet with shelves and hanging rod
- Vinyl lining on hull with lateral wood shelf
- Reading light

Head compartment accessible from saloon with sink, storage cabinet, clothes hook, towel holder, toilet paper holder, shower sump with electric drainage pump

- Wet locker

Navigation station

- Full-featured electrical panel with spare breakers, voltmeter and 12v plug
- Aft-facing nav station, seating on bench seat
- Navigation desk with storage Saloon with seating, cushions and storage under seating area

- Folding saloon table with fiddles
- Bottle storage compartment in table
- Upper storage cabinets
- Companionway with 4 varnished wood steps Galley with laminated countertops, chrome plumbing fittings, storage cabinets

L-galley to starboard with round stainless steel sink 100 L, icebox and cutlery storage

- 2-burner stove

# Mechanical and Rigging

Battened Mainsail

Furling Genoa

Code 0

Steering Wheel

Electric Winch

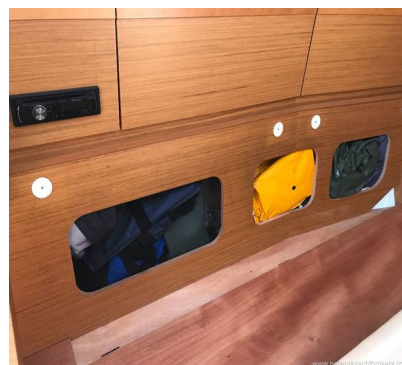
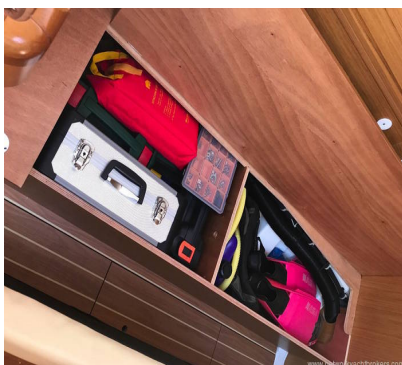
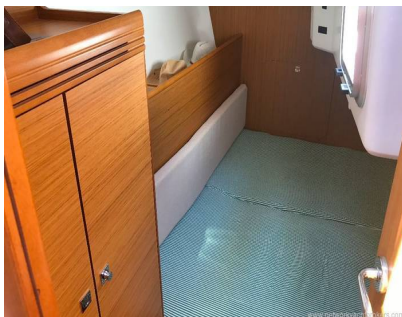


- Depthsounder • Log-Speedometer • Wind Speed and Direction • TV Set • Plotter • Autopilot • Radio • Compass • CD Player • GPS • VHF

- Battened Mainsail • Furling Genoa • Code 0 • Steering Wheel • Electric Winch • Electric Bilge Pump • Manual Bilge Pump • Marine Head • Heating

- Hot Water • Refrigerator • Battery Charger • Shore Power Inlet • Inverter • Tender • Solar Panel - x2 • Swimming Ladder • Spray Hood • Lazy Bag • Cockpit Cover • Lazyjacks





# Contact

**Blackrock Yachting Limited t/a Network Yacht  
Brokers Brighton**

## **BRIGHTON OFFICE**

***Address:***

Blackrock Yachting Ltd 1b East Lockside Brighton Marina Brighton East Sussex BN2 5HA

***Telephone:* 01273 697777**

***Email:* [ray@bryachting.co.uk](mailto:ray@bryachting.co.uk)**



