

# Cobra 700

**YEAR 1980   |   £5,000   |   NEWCASTLE OFFICE**



## Summary

**Manufacturer:** Cobra 700

**Price:** £5,000

**Location:** Newcastle OFFICE

**Year:** 1980

**ID no.:** 14308

### DIMENSIONS

- **LOA:** 23' 0" (7.01m)
- **Beam:** 8' 9" (2.67m)
- **Draft:** 3' 0" (0.91m)
- **Keel:** Bilge Keel

### ACCOMMODATION

- **Berths:** 4
- **Cabins:** 2
- **Heads:** 1
- **Showers:** 0

### PERFORMANCE

- **Top Speed:** 6 Knots
- **Cruising Speed:** 5 knots

### TANKAGE

- **Fuel:** Diesel
- **Fuel Tank Size:** 50 Litres
- **Water Tank Size:** 50 Litres

### MACHINERY

- **Engine Make:** Beta 1400
- **Horsepower:** 14
- **Drive Type:** Shaft drive



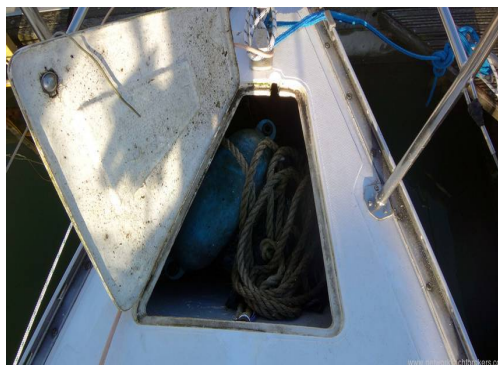


# Cobra 700

## Broker Remarks

The Cobra 700 is a beautiful little pocket cruiser, ticking so many boxes, that it is hard to overlook when considering what might be your first or last boat. Similar to her larger sisters, the 750 and 850, the 700 packs a lot into her 23 feet including spacious cockpit, easy access side decks, great storage, a decent forward cabin, enclosed heads, comfortable saloon and galley.

This particular model is appealing as she has been refitted over the past four years to provide reliable and trouble-free boating. The Beta 1400 diesel was fitted in 2014 and has completed 43 hours since. The vessel was rewired with new batteries added at the same time. The rig was overhauled and standing rigging professionally surveyed and given a clean bill of health in 2014. New roller reefing and new sails introduced in 2014. Instruments including Standard horizon plotter and new generation Raymarine wind speed and depth log introduced in 2016.



## Accommodation

The saloon is entered via the companionway. In the saloon, there is 5'10" headroom which is pretty good for a 23 footer.

To port is a dinette with a table that can be used in the cockpit. This area converts to an additional berth.

Opposite seating area is a galley with moulded sink and hand pumped water.

Gas fuelled Plastimo Neptune 4500 with oven, grill and 2-burner hob. Storage behind and adjacent.

Aft of the galley is a quarter berth, additional storage, battery isolators and switch panel.

In forepeak is a double berth with infill and opening deck hatch.

Between forecabin and saloon is the heads compartment with Jabsco twist & lock toilet and pull out sink.

Opposite is a hanging space/wet locker.

# Mechanical and Rigging

## Construction:

GRP Constructed sailing cruiser with smart blue painted topsides and white superstructure.

Bilge keeled under water profile with tiller steering.

Hull to deck join finished in aluminium toe rail with inbuilt fairleads fore and aft.

Stainless steel stemhead fitting with built in roller incorporating stainless steel bow rail.

Stainless steel bow and pulpit rails with stanchions port and starboard connected by double set guardwires.

Deep safe cockpit with sail locker to port and gas locker to starboard.

All walkways finished in moulded nonslip leading to foredeck with inbuilt anchor locker.

Saloon table can be used in the cockpit thanks to additional pedestal fitting.

## Engine & Electrics:

Vessel fitted with a Beta 1400 inboard diesel engine in 2014. This replaced the elderly Yanmar YSE8.

The YSE8 was a bulky unit so the room in the engine bay following the swap is significant.

Lots of room for servicing and daily checks.

Engine has completed 43 hours in the last five years and starts on the button.

Single lever engine control and start panel within easy reach of helm.

TMC40 2:1 reduction gearbox driving stainless steel shaft and three bladed bronze propeller.

At the same time the boat was rewired and fitted with new batteries, isolators and cabling.

## Sails & Rigging:

Deck stepped aluminium mast and boom with slab reefing main and roller furling headsail.

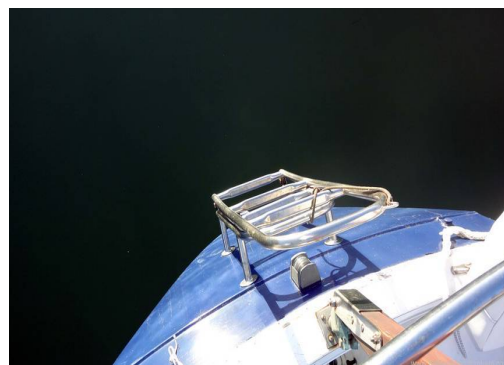
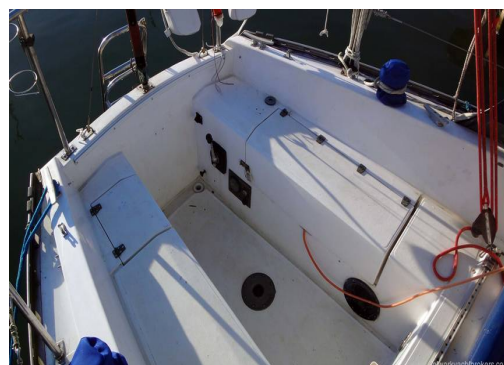
Standing rigging professionally checked over by a rigger in 2014 and given clean bill of health.

Forestay was replaced along with a new roller furling headsail system in 2014.

Majority of running rigging led aft to cockpit for easy single handed sailing.

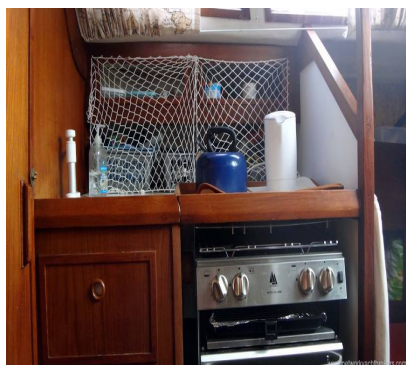
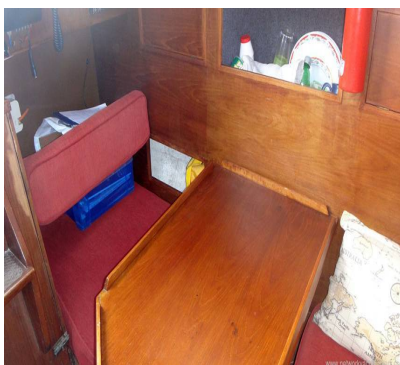
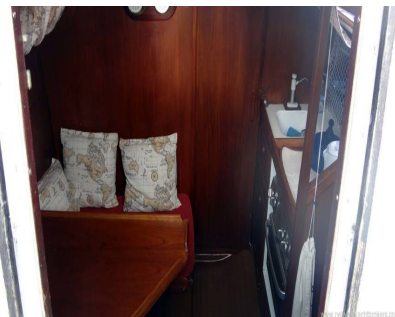
Main sail and genoa fitted new in 2014. New canvas lazybag on boom.

New ST winches fitted 2014. Mainsheet track at companionway.



Plastimo Mini-Contest bulkhead compass  
Raymarine Wind speed/direction 2016  
Raymarine Depth/log 2016  
Standard Horizon C180i colour  
chartplotter/GPS 2016  
Cobra DSC VHF 2016  
Autohelm 1000 tiller pilot  
Anchor with chain and warp  
Warps and fenders  
Gas detector 2018  
Canister fog horn  
Manual bilge pump with new diaphragm 2019  
Navigation lights  
Clock & barometer set  
Boarding ladder  
Boathook  
Sprayhood  
Cockpit enclosure  
Dodgers  
Cutlery/crockery/utensils  
Throwing line  
Ocean Safety horseshoe buoy with light  
Fire blanket  
Fire extinguishers x 2





# Contact

## boatpoint Ltd. t/a Network Yacht Brokers Newcastle NEWCASTLE OFFICE

**Address:**

Royal Quays Marina Coble Dene Road North Shields Tyne & Wear NE29 6DU

**Telephone: 0191 272 9086**

**Email:** [newcastle@boatpoint.co.uk](mailto:newcastle@boatpoint.co.uk)

