

## Corvette Cruisers Corvette 32 Classique



**Year:** 1990  
**Location:** Newcastle upon Tyne  
**LOA:** 32' 0" (9.75m)  
**Beam:** 13' 0" (3.96m)  
**Draft:** 3' 9" (1.14m)

**Remarks:**

1990 Corvette 32 Classique motor yacht. 90hp diesels providing a top speed of 25 knots. Decks covered in easy maintenance vinyl. Accommodation over two cabins and saloon. Water and autopilot controls. Cabin heating.

**Another boat sold by  
Network Yacht Brokers**

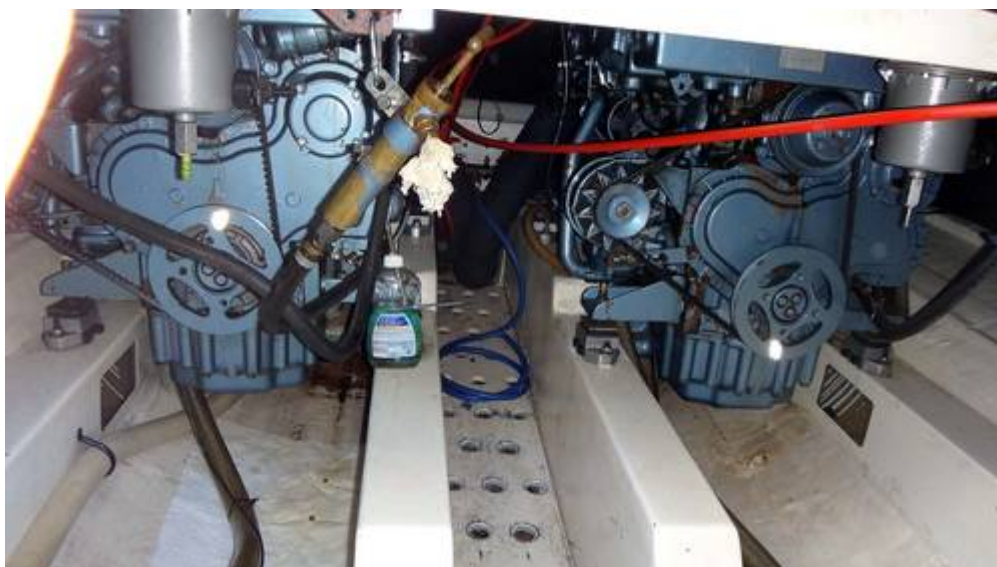
**£995**

Tax Paid

[info@boatpoint.co.uk](mailto:info@boatpoint.co.uk) T: 0191 272 9086

[networkyachtbrokers.com](http://networkyachtbrokers.com) | over 700 boats listed

REF: 14298



## Mechanical and Rigging

### **Construction:**

GRP constructed motor yacht with a semi-displacement hull and white topsides. Flared bow helps give a dry ride. Hull to deck join finished in traditional rope fender. Underwater areas antifouled and anodes replaced in May 2018. Transom with a bathing platform. Portable boarding ladder. Signature Corvette side decks are all on one level allowing free access around the decks. All walkways, foredeck, aft deck and upper deck finished in easy maintained "Flexi Teak." Solid teak capping rails and anchor mount. All varnished. Stainless steel bow, side and stern rails offering protection. Side access gates with chain port and starboard. Stainless steel aft deck rails have teak capping. Teak handrails either side of upper helm structure. Large capacity anchor locker with chain. Gas bottle situated here. An upper helm with pilot and co-pilot bench seating. Additional seating port and starboard aft. Flybridge seating cushions are new in 2017. Upper helm cover and wind dodgers in good condition.

### **Engine & Electrics:**

Vessel powered by twin Perkins M90 4.236 inboard diesel engines. These well-maintained units provide displacement speed of 6-8 knots. Engines situated beneath the saloon floor and allow easy access for servicing and daily checks. Change over switch at the lower helm to allow upper helm operation. Engine rev counters at both helms. Reduction gearboxes driving stainless steel shafts and 3-bladed bronze propellers. Shafts supported to the hull by P-Brackets. Fuel stored in 2 of 85-gallon tanks. Fuel is pre-filtered before reaching engine and tanks can be isolated. Bank of 3x12 batteries providing engine start and domestic power. Batteries fitted with isolators 12/220V switch panel with fused switches. Batteries recharged via engine alternator or Sterling Prosport charger. Vessel had extensive rewire in 2016/2017 when a lot of redundant wiring was removed. A new switch panel was made and installed along with new isolators, batteries and terminals.

## Inventory

Compass  
Raymarine C11 widescreen colour plotter with sonar and GPS  
Quantum radar  
Raymarine autopilot  
Cobra VHF on flybridge  
Lowrance DSC VHF at lower helm  
Lofrans electric windlass  
Bruce 15kg anchor with 100M 8mm chain  
Searchlight with remote  
Horn  
Electric bilge pumps  
Navigation lights  
Flybridge cover, flybridge seating - NEW



Flybridge dodgers  
Boarding ladder  
Warps and fenders  
Boathook  
Belts and filters  
Cutlery  
Automatic fire extinguisher in engine bay  
Manual fire extinguisher in the galley  
CO alarm

## Accommodation

The accommodation on the Corvette 32 has always been its appeal. Built at a time when most 32 foot boats were dark, dinghy and somewhat claustrophobic, the Corvette broke that mould. This is done to the hull shape, and the 13 feet beam. The result is accommodation normally associated with a 36 footer with large saloon, generous aft cabin and a forecabin that guests will be delighted to inhabit.

The saloon is entered on the starboard side through a midships sliding door. This is a half door due to the height of the side decks. Three steps down into the main saloon with smart blue bound carpeting and 6-foot headroom. This is a bright and airy space with lots of glass giving helmsman and crew a great view of what's going on outside. Crucially most of these windows do open allowing ventilation and are fitted with louvred privacy blinds. To starboard is a well-equipped galley with stainless steel sink, pressurised hot and cold water, 4-burner gas hob and good preparation areas. Below the counter tops are a front opening Waeco fridge, a gas oven, storage cupboard and 3 pin sockets.

Opposite galley on the port side is an L shaped, well-upholstered seating area. This area has storage below and behind the backrests and can be utilised as a single berth if required. Drop leave saloon table can be moved around depending on use.

Also in the saloon is the lower helm position. Adjacent is the switch panel, heating controls and NEW radio/mp3 player with saloon speakers.

Moving aft and down some steps is the spacious aft cabin with double berth, dressing table with mirror, hanging wardrobe and cupboard storage. This has an en-suite head with sea toilet, holding tank, sink and shower.

In the bow is the guest cabin with saloon style privacy doors. Here we have berths port and starboard which can be either generous single or intimate doubles. Heads compartment with sea toilet and sink.

Both cabins have 3-pin sockets, reading lights, deck head lighting and ducted webasto diesel fired hot air heating.

The interior furnishings are in good order and the berths are well upholstered and comfortable.

## Remarks :

The Corvette Motor yacht was the original British built trawler style yacht and was first introduced in 1974. She has existed as the 32, the 320 and currently the 340 thanks to her wide appeal as a safe and comfortable passage maker.

This particular model was built by Corvette Cruiser Ltd of Nottingham in 1990 and has undergone various refurbishments to keep her up to date and operational. Offered with varying engine sizes this model is equipped with the smaller Perkins M90 4.236 diesels allowing the boat to travel at a more economical and leisurely pace.

The huge appeal of the Corvette is her generous accommodation with a huge en-suite aft cabin and none too shabby, en-suite guest cabin up front. Upper helm seating has been renewed and all walkways have been covered in easy maintained "Flexi-Tek". Electronic navigation aids have been upgraded to Raymarine C127, 12" colour chart plotter/depth sounder and Raymarine P70R autopilot.

Webasto diesel fired hot air heating installed in 2017. Hull antifouled and anodes changed in May 2018 ready for the season.

**Contact:** Royal Quays Marina Coble Dene Road North Shields Tyne & Wear NE29 6DU

**Tel:** 0191 272 9086

**Fax :** +44 0191 272 8288

**Email:** [newcastle@boatpoint.co.uk](mailto:newcastle@boatpoint.co.uk)