

Etap 28S

YEAR 2006 | £42,995 | PLYMOUTH OFFICE



Summary

Manufacturer: Etap 28S

Price: £42,995

Location: Plymouth OFFICE

Year: 2006

ID no.: 1011241

DIMENSIONS

- **LOA:** 29' 6" (8.99m)
- **Beam:** 11' 1" (3.38m)
- **Draft:** 5' 10" (1.78m)
- **Keel:** Fin keel

ACCOMMODATION

- **Berths:** 6
- **Cabins:** 2
- **Heads:** 1
- **Showers:** 1

PERFORMANCE

- **Top Speed:** 6.5 Knots
- **Cruising Speed:** 5.5 Knots

TANKAGE

- **Fuel:** Diesel
- **Fuel Tank Size:** 65 Litres
- **Water Tank Size:** 115 Litres

MACHINERY

- **Engine Make:** Volvo Penta D1-20
- **Horsepower:** 19
- **Drive Type:** Saildrive



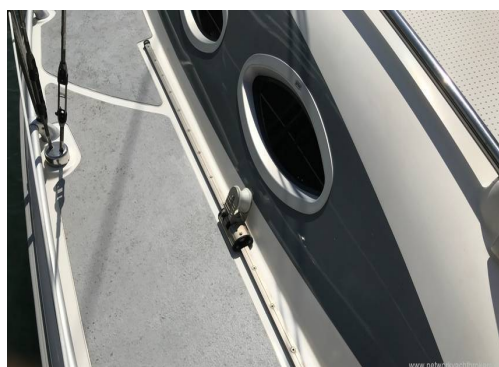
Etap 28S

Broker Remarks

Etap Yachts are well known for producing interesting boats for the discerning owner, their trademark unsinkable hulls are a huge draw for most sailors. They produce this without compromising any performance or internal volume, in fact almost contrary to this, as the internal volume is always very good throughout their range, you really notice this on the 28s model as she feels like a much larger yacht below deck and has a very comfortable layout. This Etap 28s is only in her second ownership since new, she was the dealer's showboat in 2006 and sold to the MD of Woodrolfe Yachts as his private boat, so she was ordered with a very high specification in mind! The current owner is a very experienced sailor with over 20000 sea miles under his belt and having owned a number of larger serious sailing yachts. His requirements when he purchased E-spirit were to move down in size, have a yacht that is easily handled single handed and a yacht that performs well in all conditions. The Etap 28s has delivered on all levels, everything from the solid build and unsinkability factor, the speed and handling that is delivered, especially with the EVS steering system. The volume that you get from just a 28-foot yacht and the high specification and the quality of the fit out. The condition of E-spirit is excellent throughout, the owner is fastidious with the maintenance and upkeep of this yacht, she is a very clean and presentable yacht that is very close to factory condition, which is excellent for a used boat. If you are looking for a good quality example then look no further. **Owners Remarks:**

I have been sailing for sixty years and have owned many yachts both classic and contemporary. The world-renowned designer Davis Thomas designed Light Blue for me, which I sailed across the Atlantic. While E-spirit is a very contemporary boat, by comparison, she offers great flexibility in both performance and accommodation. She is beautifully finished compared to other European production boats and comes with the great security of being unsinkable. This enables one to sail without a life raft, freeing up considerable

owner's cabin is well conceived and spacious. Espirit is a delight in every respect.



Accommodation

Sleeps six in two cabins including the saloon
Double berth in the forepeak (separated by a removable bulkhead 150x138cm)
Two single berths in the saloon
L-shaped galley to port
Aft facing chart table to starboard
Large aft heads positioned to starboard
Large double aft cabin with a transverse double berth (203x140cm)
Webasto diesel fired cabin heating
Alcantara upholstery
Oak finish

Forward Cabin:

This is not a separate forward cabin but is partitioned partially by a forward bulkhead
Double V berth for children or remove the bulkhead for adults full-size berth
Opening deck hatch
Shallow lockers
Under berth storage

Saloon:

Port and starboard single settee berths
Saloon table (slides up the mast base to keep out of the way when not needed)
Linear lockers to port and starboard
Under berth storage
Behind seat back storage
Opening portlights
Two elliptical fixed portlights

Galley:

L-shaped galley to port
Stainless steel sink
Hot and cold pressurised water
Large 65 litre top loading Isotherm G80 refrigerator
Two burner gas hob, grill and oven
Etap glasswear

Chart Table:

Aft facing chart table
194cm standing headroom

Heads:

Large separate heads
Jabsco sea water toilet
Stainless steel hand basin
Hot and cold pressurised water
A dedicated wet hanging area with a stainless framed area for items to be hung
Opening portlight
Drop down locker above hand basin for toiletries
189cm standing head room

Aft Cabin:

Separate aft cabin
Large transverse double berth

Mechanical and Rigging

Construction:

Built by Etap Yachting NV Belguim in 2006
Designed by Von Ahlen (VA-Yachtdesign)
Part of the Belgian, Italian collaboration
GRP reinforced polyester, hand laid hull deck and superstructure
Iso-NPG gelcoat
Double skin that is foam filled (300 litres of foam = unsinkable! condensation free!)
Highly thermal and acoustic insulation
Double-skinned deck and hull gives a stable structure
Fin keel
EVS steering
Oak interior joinery
Non-skid MarineDeck 2000 on deck

VAT paid
BE ETP 28004F606
STIX No: 24.5

Mechanics:

Volvo Penta 19hp 3-cylinder diesel engine
Single lever morse control
Freshwater cooling with a heat exchanger (speed seal impellor cover)
Saildrive transmission
Brunton two blade autoprop with variable pitch

Electrics:

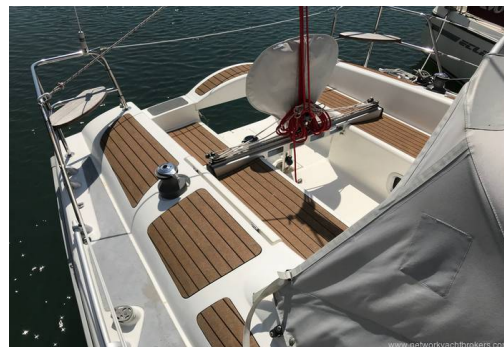
Two x 12V, 70ah batteries
12V 60ah battery
Mains powered battery charger
Charging from engine alternator
Solar panel
Solar Technology International charge controller
115 amp alternator
230V shorepower system
Battery level monitor

Tankage:

Freshwater capacity 115 litres
Fuel capacity 65 litres
Tank gauges for both water and fuel

Water System:

Pressurised water system



Tacktick Micronet systems (Speed/log, depth, GPS and wind speed and direction)

Wind anemometer removed each winter to prolong its lifespan (spare anemometer as backup)

Raymarine ST4000+ autopilot for EVS

Raymarine S100 remote pilot controller (enables you to control the boat from anywhere on the boat via remote)

Icom 601, DSC, VHF command mic

Steering compass

At The Chart Table;

Digital Yacht Smartchart chartplotter (AIS integrated)

AIS transmitter

Yeoman compact chartplotter

Icom 601, DSC, VHF radio (command mic for the cockpit)

Nasa, MeteoMan weather station

Ground Tackle:

8kg Kobra anchor

30 meters of 8mm chain

30 meters multiplait warp

Double stainless steel bow roller

Deck Gear:

Two x Lewmar #30, self-tailing, two-speed sheet winches

Two x Lewmar #16, self-tailing, two-speed halyard winches

Nine x Spinlock rope clutches

Self-tacking jib track with car

Genoa tracks with cars, adjustable from cockpit

Mainsheet track (removable to make more space in the cockpit)

Stainless steel pulpit, pushpit and stanchions

Stainless steel mooring cleats

Aluminium toe rail

Opening deck hatch

Safety Equipment:

All Safety equipment listed is included in the sale but the vendor offers no warranties

The purchaser must service the safety equipment and ensure that it is appropriate for his purposes

ACR EPIRB

Webbing jackstays

Emergency tiller

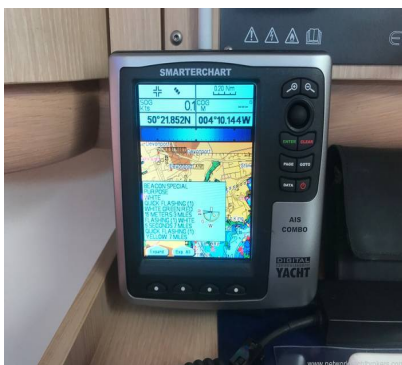
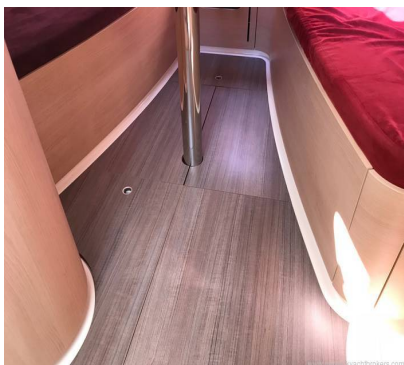
Navigation lights

Electric bilge pump

Manual bilge pump

Fire extinguishers

• •
Four man inflatable dinghy
Canvas sprayhood with aluminium frame
Canvas stackpack with lazyjacks
Cockpit cushions
Various warps and fenders
Boathook
Flagstaff
Ships clock and barometer



Contact

Network Yacht Brokers (Southwest) Ltd t/a Network Yacht Brokers Plymouth

PLYMOUTH OFFICE

Address:

Network Yacht Brokers (Plymouth), Mayflower International Marina, Ocean Quay, Plymouth. PL1 4LS

***Telephone:* 01752 605377**

***Email:* info@nybplymouth.com**

