

Westerly Westerly Storm

YEAR 1990 | £30,000 | PLYMOUTH OFFICE



Summary

Manufacturer: Westerly Westerly Storm

Price: £30,000

Location: Plymouth OFFICE

Year: 1990

ID no.: 1011235

DIMENSIONS

- **LOA:** 33' 2" (10.11m)
- **Beam:** 11' 7" (3.53m)
- **Draft:** 5' 6" (1.68m)
- **Keel:** Fin keel

ACCOMMODATION

- **Berths:** 7
- **Cabins:** 2
- **Heads:** 1
- **Showers:** 1

PERFORMANCE

- **Top Speed:** 7 Knots
- **Cruising Speed:** 5.5 Knots

TANKAGE

- **Fuel:** Diesel
- **Fuel Tank Size:** 80 Litres
- **Water Tank Size:** 180 Litres

MACHINERY

- **Engine Make:** Volvo Penta (Model 2003)
- **Horsepower:** 28
- **Drive Type:** Shaft drive



Westerly Westerly Storm

Broker Remarks

The Westerly Storm Cruiser is an excellent example. Built-in 1990 in the UK by renowned yacht builders 'Westerly'. "MISTORI" is an exceptional yacht, as she is one of only nine Westerly Storm cruisers built with a fin keel. All other storm cruisers are fitted with the bilge keel profile.

This Westerly Storm has clearly been well loved throughout her lifetime by all owners. Purchased by current owners in 1997, MISTORI has lived up to the Westerly name of being a reliable, dependable, and fast cruising yacht in all weathers. During the current owners 20-year ownership, they have upgraded her appropriately during this time. The list of upgrades is long, and you can see what has been done when you read through the specification. Most recently the cutlass bearing, standing rigging, seacocks and some of the electrics have been renewed. The very well known headlining issue with Westerly Yachts has been addressed on this Storm 33; the headlinings were replaced entirely in 2010! If you would like to view this yacht contact our sales team today, you wouldn't want to miss out on this excellent example!!

Owners Remarks: Before us buying Mistori in 1997 she had two previous owners who had only used her lightly. We have been delighted with her and have sailed her in the Bristol Channel, the West country and have also sailed to the Channel Islands many times. We have continued to maintain and update her regularly. She is a lovely yacht to sail, and you feel secure in her whatever the weather. We are very sorry to part with her but we have bought a larger



Accommodation

Sleeps up to 7 guests in two cabins and the saloon

Double V berth in the forecabin

C-shaped seating to port in the saloon
(converts to a double berth)

Single berth to starboard in the saloon

Chart table is positioned to starboard, aft of the saloon

L-shaped galley to port, aft of the saloon

Aft heads to starboard

Double aft cabin to port

Headlining has been replaced completely in March 2010

All interior lights converted to LED lamps

Eberspacher diesel heating with outlets in the saloon and aft cabin

Fire retardant foam in all upholstery

Forecabin:

Double V berth with infill

Hanging Locker to starboard with zipped canvas door

Sink with fresh water foot pump and pressurised hot water from engine calorifier

Lockers above and below the sink with zipped canvas doors

Mirror

Shelves to both port and starboard

Water tank under berth

5 separate large storage areas under forecabin berths

Opening deck hatch

Saloon:

C-shaped seating to port

Seating converts to form a double berth to port formed with infill cushion

Single berth to starboard with lee cloth and fixing points

When port berth is used as single it has a lee cloth with fixing points

Storage available in 8 Lockers and under saloon berths

Storage above from port and starboard

Galley:

L-shaped galley to port
Double stainless steel sinks
Pressurised hot and cold pressurised water
Manual foot pump available

Gas safety record certificate from 2016 – new regulator, Hayward 4005, New 8mm flexible hose, New braided flexible hose for cooker.

Top loading refrigerator with solid shelf
4 drawer storage aft of stove
Good worktop space
Storage cupboards
Storage under sinks
Galley seacock changed (2016)
Jabsco water pump (new 2012)

Chart Table:

12V electrics control panel with battery monitor
Standard Horizon CP300i chart plotter (2009)
Digital Yacht AIS B transceiver with serial to USB adapter for connecting to PC (2009)
Standard Horizon Quest x GX1500E Fixed DSC VHF transceiver with remote Standard CPM25 RAM speaker/mic in the cockpit. (2009)
Raytheon Radar Pathfinder SL70
GlobalSat GPS BU-353 USB GPS receiver for PC connection
Eberspacher controls
Red/White chart light (new 2017)
Under nav seat storage

Heads:

Positioned to starboard and aft of the chart table
Hot and cold pressurised water
Sink and Mirror.
Storage lockers above and below the sink
Shower using sink extendable hose
Powered shower drainage
Shower Curtain
Heads seacock replaced (new 2016)
Jabsco sea water toilet upgraded to manual twist n' lock pump (new 2017)

Aft Cabin:

Positioned to port, aft of the galley
Double berth
Hanging Locker to starboard with zipped canvas door
Shelf to Port

Mechanical and Rigging

Construction:

Designed by Ed Dubois
 Built by Westerly Yachts in 1990
 Constructed to Lloyds register of Shipping standards, with the Hull Construction Certificate
 Fin keel (only two cruisers made with the fin keel arrangement)
 Keel abraded and primer coated (2015)
 Keel studs 50% over Lloyds specification with locking bolts
 Spade rudder
 Double gel coat to both external hull and internally to the waterline
 Temperature and humidity controlled laminating
 Quality control system with 200 Lloyds approved items
 Solid teak toe rails, grab handles and rubbing strake for durability
 316 high-grade stainless steel
 Hull waxed and polished 2018
 Antifouled 2018
 Two coats of grey deck paint re-applied 2016
 Galley seacock replaced (new 2016)
 Heads seacocks replaced (new 2016)

VAT Paid
 HIN No: SOU916164/1
 Sail No: SM-C14

Mechanics:

Volvo Penta, (model 2003), 3cylinder, 28hp, diesel engine (last service 2017 & winterised 2017-2018 winter)
 Volvo injection bend replaced 2013
 New cutlass bearing 2018
 New impeller (Dec 2017)
 Single lever morse control
 Rev counter and warning lights for loss of charge
 Water temperature and oil pressure gauges
 Shaft drive (new shaft anode 2018)
 New hull anode (2018)
 Two blade fixed propeller
 Strinner rone cutter



Navigation Aids:

In The Cockpit;
Raymarine i60 wind speed and direction (new 2017)
Raymarine ST60 log/speed
Raymarine ST60 depth
Standard CPM25 RAM speaker/mic (new 2009)
Autohelm 2000 tiller pilot
Windex VHF aerial (new 2012)

At the Chart Table:

Standard horizon CP300i chart plotter (new 2009)
Digital Yacht AIT250 AIS B transponder with serial to USB
adapter for connecting to PC (new 2009)
Standard Horizon Quest-X GX1500E Fixed DSC VHF
transceiver with remote
Raytheon Radar Pathfinder SL70 (1999)
GlobalSat GPS BU-353 USB GPS receiver for PC
connection

Ground Tackle:

35lb CQR Anchor
Simpson Lawrence Anchorman manual anchor windlass
Stainless steel bow roller
25 metres of chain, spliced to 75meters anchorplait warp
Spare Kedge anchor (Bruce)
Kedge chain in forecabin locker

Deck Gear:

2 x Barient #18, two-speed, halyard winches
2 x Lewmar #44, two-speed, self-tailing sheet winches
10 x Spinlock XAS rope clutches for halyards and control
lines
Adjustable genoa cars on aluminium tracks
Deep cockpit locker (fuel cut off valve at the base of the
locker)
Gas locker holding 2x 2.75KG bottles on aft port side
cockpit locker
Teak cockpit grating, tow rail & grab rails
Stainless steel pulpit and pushpit
Aluminium stanchions
Stainless steel boarding ladder with two steps on transom
Aluminium fairleads and mooring cleats
2 x opening deck hatches

All of the safety equipment listed is included in the sale but the vendor offers no warranties on service dates etc of said items.

The purchaser must service the safety equipment & ensure that it is appropriate for his purposes.

Zodiac open sea iso 9650-1, 4 Person liferaft (due service Oct 2018)

Liferaft cradle on stern fitted 2016

Offshore Flare pack. Expires 2019

1 x white anti-collision flare

Horseshoe lifebuoy with Apollo compact lifebuoy LED light (new 2017)

Safety anchor points in the cockpit

Webbing Jackstay lifelines port and starboard

Manual Bilge pump

Fire extinguishers located in aft cabin and saloon (both in the green sector)

Automatic fire extinguisher in the engine compartment (in the green sector)

Fire Blanket at the galley

Gas safety record certificate from 2016

Smoke and CO battery operated alarms

Navigation and steaming lights

Tricolour and white masthead light

Anchor light

Deck light

Equipment:

Canvas mainsail stackpack by Kemp Sails with lazyjacks (new 2011)

Canvas sprayhood by Ocean Canvas (new 2015)

Canvas cockpit dodgers

Tiller extension

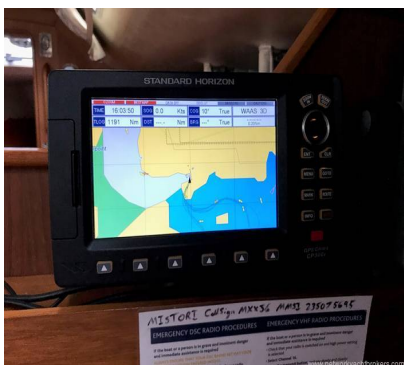
Bosuns chair

Boathook

Various warps and fenders

Outboard bracket on pushpit

Ensign staff + ensign



Contact

**Network Yacht Brokers (Southwest) Ltd t/a Network
Yacht Brokers Plymouth**

PLYMOUTH OFFICE

Address:

Network Yacht Brokers (Plymouth), Mayflower International Marina, Ocean Quay, Plymouth. PL1
4LS

***Telephone:* 01752 605377**

***Email:* info@nybplymouth.com**



NETWORK

WESTERLY WESTERLY

www.networkyachtbrokers.com

