

# Beneteau Oceanis Clipper

YEAR 2000 | £44,000 | CONWY OFFICE



## Summary

**Manufacturer:** Beneteau Oceanis Clipper

**Price:** £44,000

**Location:** Conwy OFFICE

**Year:** 2000

**ID no.:** 073916

### DIMENSIONS

- **LOA:** 34' 0" (10.36m)
- **Beam:** 11' 3" (3.43m)
- **Draft:** 5' 3" (1.6m)
- **Keel:** Fin Keel

### ACCOMMODATION

- **Berths:** 6
- **Cabins:** 2
- **Heads:** 1
- **Showers:** 1

### PERFORMANCE

- **Top Speed:**
- **Cruising Speed:**

### TANKAGE

- **Fuel:** Diesel
- **Fuel Tank Size:** 70 Litres
- **Water Tank Size:** 200 Litres

### MACHINERY

- **Engine Make:** Volvo 2030
- **Horsepower:** 29
- **Drive Type:** Shaft drive

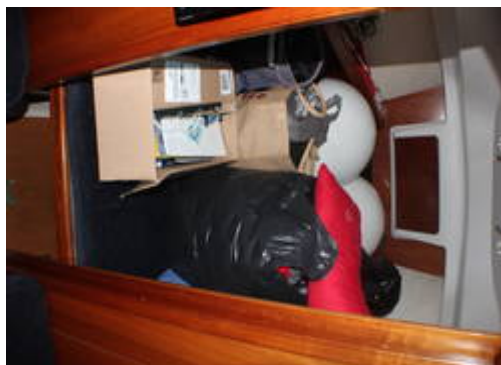


# Beneteau Oceanis Clipper

## Broker Remarks

We present this lovely Beneteau Oceanis 331 Clipper. With a large inventory including heating, navigation pack and in-mast furling this vessel has a lot going for her. With a lack of recent use, she is now for sale here in Conwy Marina.

Always stayed locally her whole life she has clearly been loved by her 4 owners from new. Needs a few updates in areas but expected for a 20-year-old boat with plenty of life in her.





## Accommodation

The boat has Eberspacher heating. There is a twin berth in the forepeak with an infill to convert to a double. In the main saloon, there are two single berths on either side of the table. The chart table is to port and aft of the saloon seating with the switch panel. The Galley is to port and the heads compartment is opposite. The heads is generous in size with a marine WC, basin and handheld shower head. The large double berth aft cabin is then to starboard.

TV

JV Radio/CD player with speakers

Fridge

Gimble cooker, 2 burner

Sink

# Mechanical and Rigging

## Mechanical

1x Volvo 2030 diesel engine.

Shaft drive to two blade propellor

2x Batteries take care of the domestic and engine needs  
and are charged through the engine alternator and the  
shore-power charger.

Wheel steering

## Rigging/Spars

In mast furling and roller furling genoa

Rigging is original as far as known



### Equipment

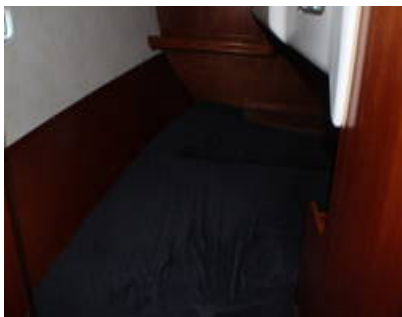
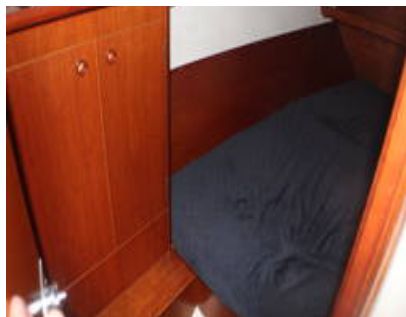
Anchor, chain and warp.  
Electric windlass anchor.  
Stainless steel pulpit, pushpit, stanchions  
and guard wires.  
Wheel steering.  
Binnacle mounted engine controls  
Sprayhood  
Binnacle cover.  
Transom shower.

### Navigation Equipment

Navigation lights.  
Compass.  
Raymarine RL70C chartplotter  
Raytheon depth/speed  
Autopilot

### Safety Equipment

Lifejackets  
Bilge pump  
Handheld VHF radio  
Fireextinguisher



# Contact

**Boatpoint Conwy**

**CONWY OFFICE**

***Address:***

Boatpoint Conwy, Conwy Marina, Conwy, North Wales, LL32 8GU

***Telephone:* 01492 580001**

***Email:* [info@nybconwy.co.uk](mailto:info@nybconwy.co.uk)**

