



# Bayliner Bayliner 3055

YEAR 1994 | £19,995 | VAT PAID | CONWY OFFICE



# Summary

**Manufacturer:** Bayliner Bayliner 3055

**Price:** £19,995

**Location:** Conwy

**Year:** 1994

**ID no.:** 073701

## DIMENSIONS

- **LOA:** 32' 10" (10.00m)
- **Beam:** 10' 0" (3.05m)
- **Draft:** 3' 0" (0.92m)
- **Keel:** Planing

## ACCOMMODATION

- **Berths:** 4
- **Cabins:** 2
- **Heads:** 1
- **Showers:** 1

## PERFORMANCE

- **Top Speed:** 37knts
- **Cruising Speed:** 26knts

## TANKAGE

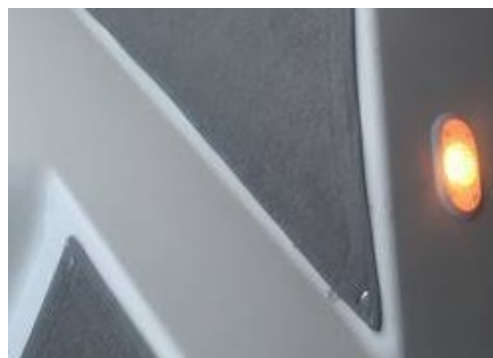
- **Fuel:** Petrol
- **Fuel Tank Size:** 125 Gallons
- **Water Tank Size:** 36 Gallons

## MACHINERY

- **Engine Make:** Mercruiser 5.0LX
- **Horsepower:** 460
- **Drive Type:**

## OTHERS

- **Aircon:**
- **Heating:**

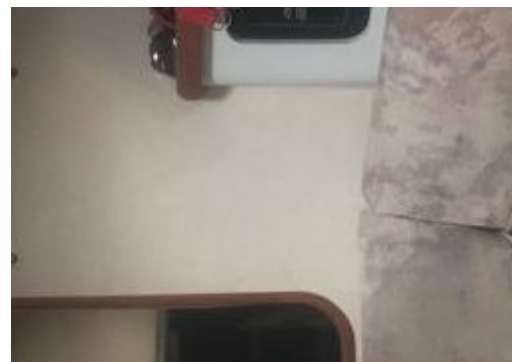


# Bayliner Bayliner

## 3055

### Broker Remarks

Well equipped motor cruiser ideal for lake or coastal cruising. GRP constructed motor yacht with planing hull and moulded spray strakes. Bathing platform is integrated to hull moulding giving greater stability and reduces slap when at anchor. Aft cockpit entered from bathing platform with padded bench seating. The cockpit sole lifts on a gas assisted strut allowing access to the twin engines. Step up and it takes you to the upper cockpit with large upholstered seating area to port. This area was recovered in 2010 and has a large removable table for entertaining. This area also converts to a large sunpad. There is a handy cockpit sink with ample storage below. Opposite the seating area is the helm position with large dash with instrumentation for engines and dual control throttle controls. Large tempered glass windscreen with access to large sundeck with hand rails. foredeck is protected by stainless steel guardrails.



## Accommodation

Below deck is entered via the cockpit through lockable plexiglass door, aft on the portside is the aft cabin with privacy curtain a 60"x 80" berth that has a removable section that converts to bench seat. This has drawer storage below. separate hanging locker, deck hatch and port light allow ventilation and natural light. Three additional electric lights and electric socket. The saloon on portside is a large comfortable dinette with storage below, this converts into 40" x 78" berth. There are large side windows with curtains and a deck hatch for natural light. Forward of this area and in the bow section is a double V berth measuring 90" x 68". There is ample storage below and also features two reading lights and port lights either side of the hull. Aft and on the starboard side is the galley with large work surfaces, stainless steel with pressurised hot and cold water and 2 burner Origo dual fuel stove. Large capacity Norcold fridge with small freezer section. Good storage with cupboards and drawers, microwave oven fitted in recess.

Hot and cold pressurised water  
Galley with microwave, hob and fridge  
Convertible dinette  
Opening port lights and deck hatches  
12v Lighting

# Construction, Mechanical and Rigging

Powered by twin Mercruiser 5.0L petrol engines with Alpha outdrives developing 230hp. Vessel is driven from the upper cockpit giving great visibility when manoeuvring. Display panel include rev counter, speed, temperature, oil pressure and voltmeter. separate fuel gauge with sender unit. Top mounted engine controls with built in trim and tilt function.

12v bank of batteries recharged from engine alternators, there is also a battery charger operational when hooked up to shore power.

Battery bank with isolators

Shore power

Battery charger

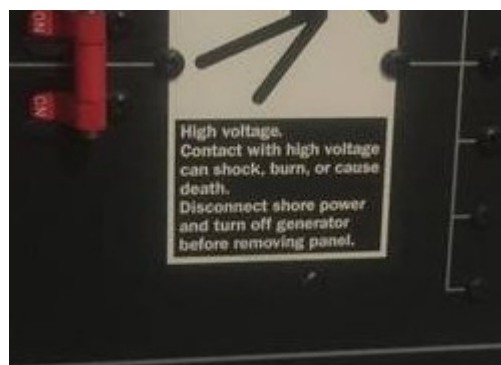
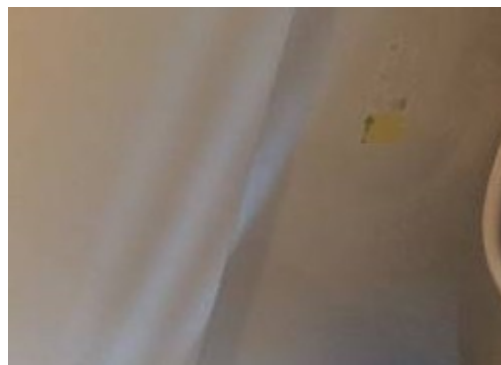
Stainless steel steering wheel

Engine room blowers

Power steering

Hydraulic trim tabs.

All works carried out in 2016/17



New Transom Assemblies (and rams) Fitted.

Outdrives Professionally Refurbished.

New Props.

New Exhaust Ports.

Both engines been taken out and fully serviced

Canopy Professionally Cleaned and Refurbished.

New Battery Charger Fitted.

New water pump fitted.

New Jabsco Toilet Pump Fitted.

Anti-fouled in March 2016.

Very low engine hours.

New 110 Battery Fitted.

## Inventory

Ritchie Compass  
Depth Sounder  
Speed/log  
VHF radio  
Anchor with chain and warp  
Horn  
Electric and manual bilge pumps  
Boathook  
Navigation lights  
Boarding ladder  
Fenders  
Full cockpit cover  
CD player  
Searchlight  
Bathing platform with built in ladder  
Bow platform with anchor roller  
Mooring cleats  
Drinks holder  
Cockpit sink  
Radar arch with recessed lighting  
Transom shower



# Contact

## BOATPOINT CONWY CONWY OFFICE

**Address:**

Boatpoint Conwy, Conwy Marina, Conwy, North Wales, LL32 8GU

**Telephone: 01492 580001**

**Email:** [info@nybconwy.co.uk](mailto:info@nybconwy.co.uk)

Disclaimer : Boatpoint Conwy offers the details of this vessel for sale but cannot guarantee or warrant the accuracy of the information contained in the specification or warrant the condition of the vessel or equipment. A buyer should instruct his agents, or surveyors, to investigate such details as the buyer desires validated. This vessel is offered for sale subject to no prior sale, price change, or withdrawal without notice.

