

Grand Banks Grand

YEAR 1972 | £35,000 | CONWY OFFICE



Summary

Manufacturer: Grand Banks Grand

Price: £35,000

Location: Conwy OFFICE

Year: 1972

ID no.: 073664

DIMENSIONS

- **LOA:** 36' 4" (11.07m)
- **Beam:** 12' 12" (3.96m)
- **Draft:** 4' 1" (1.24m)
- **Keel:** Displacement

ACCOMMODATION

- **Berths:** 7
- **Cabins:** 3
- **Heads:** 2
- **Showers:** 2

PERFORMANCE

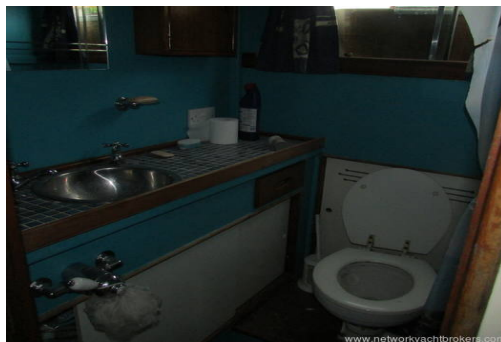
- **Top Speed:** 14
- **Cruising Speed:** 8

TANKAGE

- **Fuel:** Diesel
- **Fuel Tank Size:** 1400 Litres
- **Water Tank Size:** 400

MACHINERY

- **Engine Make:** Ford Lehman 6-Cylinder
- **Horsepower:** 108
- **Drive Type:** Shaft drive



Grand Banks Grand

Broker Remarks

'Jeremy Fisher', a Grand Banks 36 built in 1972 of mahogany with teak side decks and cockpit. Distinctive teak-trimmed transom and rails, plumb bow, high bulwarks, large deck house and flying bridge, the 36 foot Grand Banks is a boat that has a traditional look and successful well proven design. She is good order and of tidy appearance throughout with only minor general and on-going maintenance to attend to such as wood varnishing etc. An ideal vessel for live-aboard and suitable for coastal and offshore cruising. Current survey available. **PRICED TO SELL** - Lying ashore - Conwy Marina, North Wales



Accommodation

Sleeps 7 in 3 cabins including the saloon

Internally from forward there is a chain locker, two berth cabin, WC and wash compartment to starboard with locker space to port. A step up arrangement leads to the wheelhouse / saloon with controls set to starboard, galley area to port and seating berths and stowage areas to either side. A step down from the saloon leads to the three berth cabin within the stern of the vessel with a second WC and wash compartment set to starboard.

Externally there is additional storage space within the lazarette locker at the stern deck. Access is provided from the port side deck to the flybridge with secondary controls above the main wheelhouse. The engines and tankage are under the wheelhouse floor.

Force 10 4-burner gas stove with oven and grill.

Icebox

Cream leather upholstery in saloon

Teak interior

25L Holding tank

Airtronic diesel Heating system (4KW) - New

LG Washer/Dryer

Smart 22" TV

Teak interior joinery

Teak parquet flooring

Curtains

Construction, Mechanical and Rigging

Construction:

Grand Banks 36 Classic - Built by American Marine

(Singapore) in 1972 to a design by Ken Smith

Hull #36-283

British Registered #357899 (Expired)

Mahogany hull

Teak side decks and transom

Dual steering

Mast and boom for steadying sail

Last antifouled July 2017

Anodes last replaced July 2017

Mechanical:

Twin Ford Lehman 6-cylinder 108hp diesel engines (1972), driving through conventional stern gear and fixed 3-bladed propellers.

Last serviced 2016

Sea water cooled

Borg Warner gear box's

Stainless steel shaft drives with 3-blade bronze propellers

Twin lever controls

Cruising speed 8-10 knots

Maximum speed 14 knots

Electrics:

12 volt system supplied by 2 x batteries (2013)

Charged by engine alternators and 220v battery charger

Ferryman 3KVA Generator - Serviced 2016 (only done 25hrs)

Shore power and cable

Water System:

Manual and pressurised water systems

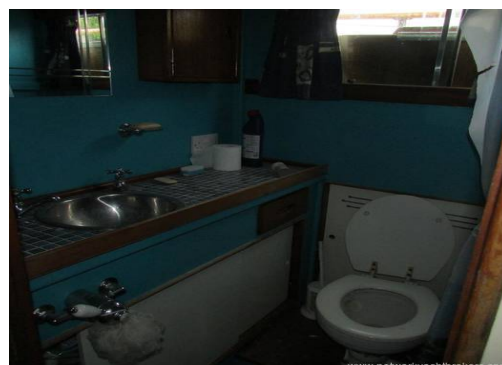
Water heating system (Calorifier/Immersion)

Tankage:

Fuel capacity 1400L in 3 x steel tanks

Fresh water capacity (400L) in 2 x steel tanks

1 x 25L Plastic Holding tank



Navigation Equipment:

2 x Compass's
Autohelm Depth sounder
Log/Speed
Windspeed/direction
Lowrance Global Map GPS Plotter - 2003
NECO Autopilot
GPS/Plotter
Furuno FCV 522 Radar
Radar detector
Quasar Metro VHF radio

Ground Tackle:

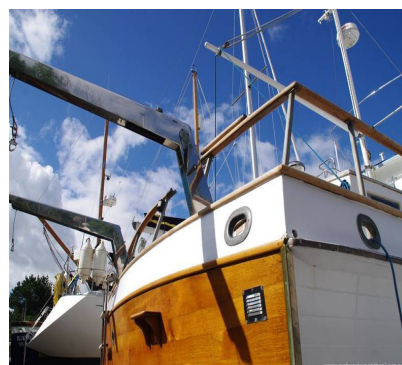
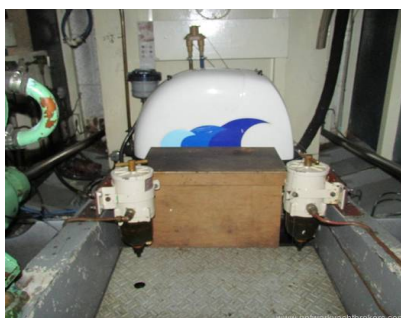
CQR anchor with 60 metres of chain
Danforth anchor
Electric windlass

General Equipment:

Cutlery and Crockery
Clock and Barometer
Radio and CD Player
Cockpit speakers
Cockpit table
Cockpit cushions
Davits (Manual)
Avon tender
Warps, fenders and boathook
Fender baskets
Aft deck flybridge cover
Pulpit, pushpit and guardrails
Boarding ladder
Bathing platform

Safety Equipment:

Navigation lights
Anchor, deck and steaming lights
Manual bilge pump
2 x Electric bilge pumps
Liferaft (service due)
Danbuoy
5 x Lifejackets
Flares (expire 2015)
Horn
Fire Blanket
2 x Manual Fire Extinguishers
2 x Automatic Fire Extinguishers
Radar reflector
Menai 3m dinghy - 2007



Contact

Boatpoint Conwy

CONWY OFFICE

Address:

Boatpoint Conwy, Conwy Marina, Conwy, North Wales, LL32 8GU

***Telephone:* 01492 580001**

***Email:* info@nybconwy.co.uk**

