

Beneteau Oceanis Clipper

YEAR 2005 | £44,995 | CONWY OFFICE



Summary

Manufacturer: Beneteau Oceanis Clipper

Price: £44,995

Location: Conwy OFFICE

Year: 2005

ID no.: 072734

DIMENSIONS

- **LOA:** 32' 9" (10.00m)
- **Beam:** 10' 8" (3.26m)
- **Draft:** 5' 11" (1.8m)
- **Keel:** Fin keel

ACCOMMODATION

- **Berths:** 6
- **Cabins:** 2
- **Heads:** 1
- **Showers:** 2

PERFORMANCE

- **Top Speed:** 7
- **Cruising Speed:** 5

TANKAGE

- **Fuel:** Diesel
- **Fuel Tank Size:** 65 Litres
- **Water Tank Size:** 160 Litres

MACHINERY

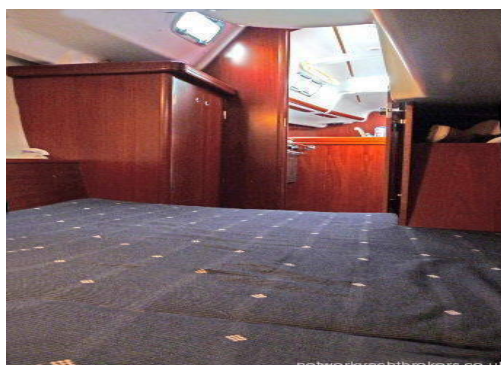
- **Engine Make:** Volvo Penta MD2020D
- **Horsepower:** 21
- **Drive Type:** Shaft drive



Beneteau Oceanis Clipper

Broker Remarks

We present this lovely and popular Beneteau Oceanis 323. Four owners from new, this vessel comes with a high specification and very presentable condition. The Beneteau Oceanis 323 is known to have set new standards for 32ft cruising yachts when it was first launched in 2004, nearly two metres of headroom down below and offers much more accommodation than almost any other vessel of its size from the mid 2000's. Lying Conwy Marina.



Accommodation

'Owners Version' - 6 Berths in 2 Cabins including saloon.

The private forecabin provides a double berth.

There are two single settee berths in the saloon either side of the polished wood dropleaf saloon table. There are storage lockers and quality varnished cabinetry throughout.

The galley is to port and is well equipped with a two burner gas stove with oven, a fridge and a stainless steel sink with pressurized hot/cold water supply.

The large private head compartment is to starboard and has a marine wc c/w 85L holding tank, a hand basin with hot/cold water supply and a separate shower.

The private aft cabin is to port and provides a generous double berth.

Mechanical and Rigging

Construction:

Built by Group Beneteau in 2004 (2005 model year).
Launched and commissioned January 2005
GRP hull, deck and superstructure
Fin keel

Maintenance Log:

Engine last serviced Feb 2017
Boat last ashore in Aug 2017 - antifoul + anodes replaced
All seacocks replaced with DZR in March 2012
Toilet pump replaced in May 2018
Sails washed/launched/valeted in 2015
Volvo drive seal replaced in March 2012
Cutlass bearing replaced in March 2012
Guard rails replaced and stanchions fixed 2015

Mechanical:

Volvo Penta MD2020D 21hp diesel engine, conventional shaft drive to a fixed two bladed propellor.

Water:

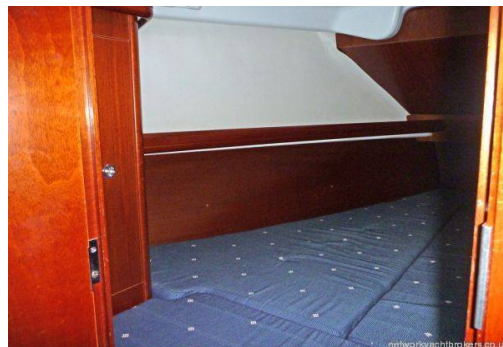
Pressurised hot and cold water
Water heated via 22L calorifier or 240v mains.

Electrical:

3 x 12v batteries (290Ah in total), charged by engine alternator and shore power charger
10ah Battery charger
240v Shore power & cable

Spars & Rigging:

Z-Spar aluminium mast and boom.
Stainless steel standing rigging.
Running rigging.
Slab reefed mainsail (with navy blue lazy bag)
Furling genoa
3 x Self-tailing winches
Running rigging.
Slab reefed mainsail (with navy blue lazy bag)
Furling genoa
3 x Self-tailing winches



Deck Equipment:

12kg CQR Plough type anchor with 30m chain and warp
Stainless steel pulpit, pushpit, stanchions and guard wires.
Sprayhood and full cockpit tent
Warps and fenders.
Fender step
Hot/cold cockpit shower.
Outboard motor bracket.
Wooden drop leaf cockpit table.
2x Additional opening portholes.
Pivoting pilot seat
Pivoting steering wheel
Cockpit cushions
Halyard bags and stowage bags

Navigation Equipment:

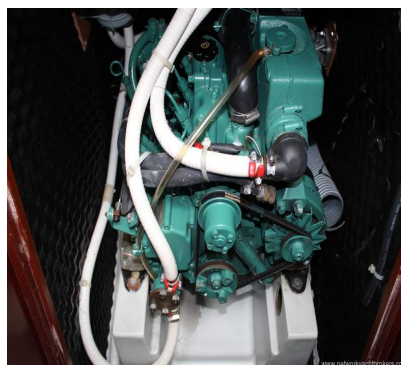
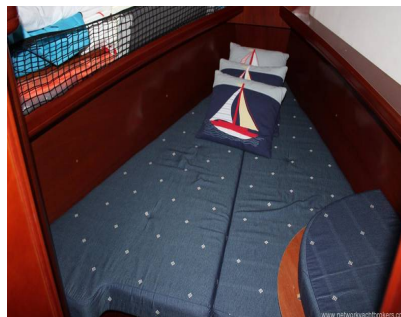
Compass
Raymarine ST60 Wind system (Direction)
Raymarine 435 GPS Plotter
Raymarine ST60 Tridata (log/speed/depth)
Simrad RD68 VHF (DSC)
Raymarine Evolution 100 wheelpilot

Safety Equipment:

Manual and electric bilge pumps
Fire blanket
3 x Fire extinguishers
1 x Auto fire extinguisher
Jack stays
Horse shoe buoy

Other Equipment:

Sony Bluetooth Radio/CD
Combined digital TV/DVD player
3G Internet router/WIFI
Glomex TV aerial & amp
Clock & Barometer
Transparent washboards
Lee berth



Contact

Boatpoint Conwy

CONWY OFFICE

Address:

Boatpoint Conwy, Conwy Marina, Conwy, North Wales, LL32 8GU

***Telephone:* 01492 580001**

***Email:* info@nybconwy.co.uk**

