

Quicksilver Quicksilver Activ

YEAR 2019 | £86,000 | SWANSEA OFFICE



Summary

Manufacturer: Quicksilver Quicksilver Activ

Price: £86,000

Location: Swansea OFFICE

Year: 2019

ID no.: 05822

DIMENSIONS

- **LOA:** 24' 3" (7.40m)
- **Beam:** 9' 4" (2.85m)
- **Draft:** 1' 7" (0.49m)
- **Keel:**

ACCOMMODATION

- **Berths:** 4
- **Cabins:** 2
- **Heads:** 1
- **Showers:** 0

PERFORMANCE

- **Top Speed:**
- **Cruising Speed:**

TANKAGE

- **Fuel:** Diesel
- **Fuel Tank Size:** 300 Litres
- **Water Tank Size:** 80 Litres

MACHINERY

- **Engine Make:** Mercury Diesel 2.0L
- **Horsepower:** 170
- **Drive Type:** Sterndrive



Quicksilver Quicksilver Activ

Broker Remarks

The sport, spacious and vert individual Activ 755 Weekend is a boat thats made for being on the water and makes every voyage an adventure. With room for nine people, the spacious dining area with galley make those moments spent with family & friends, extra special. **SMART Pack Included**

- Cockpit comfort pack - Cockpit sun lounge, Aft seat extension L-Lounge, Cockpit table
- Galley pack - LPG Stove, Refrigerator
- Forward sun lounger
- Aft seat with inclinable backrest
- Curtains
- Roof hatch
- Enclosed sea toilet
- Shorepower
- Bow electric windlass
- Electric trim tabs
- Cockpit flood light

Additional Optional Extras

- Mercury diesel 2.0L - 170 hp Tier III
- Hull color grey
- Bow thruster

Contact us today to discuss this new boat. Part Exchange considered and Finance Available



Accommodation

- Large cabin with galley and dining area that seats up to 4 persons
- Sleeping accommodation for 4 people
- Large front forward berth comfortably sleeps two adults while the mid berth is suitable for one person.
- Convert the dining area into fourth berth
- Large hull windows providing plenty of natural light in the sleeping area

Mechanical and Rigging

Systems

- Mercury diesel 2.0L - 170 hp Tier III
- Dual battery installation
- Battery Isolator
- Integral fuel tank (300L)
- Wheel steering

Hull and Deck Design

- Hull Colour (Included)
- Anchor locker
- Bow roller
- Navigation lights
- Swim ladder



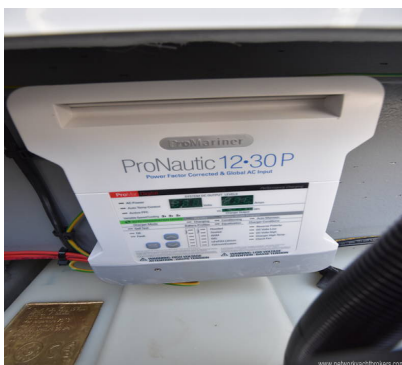
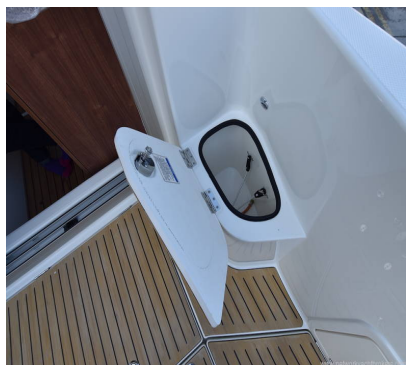
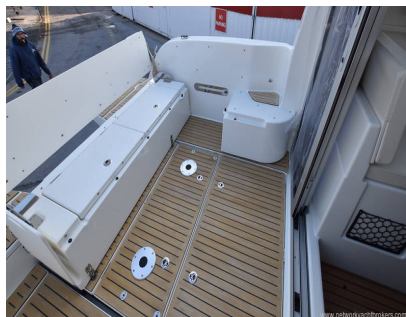
Standard Equipment

- Navigation lights
- Rod holders
- Self bailing cockpit
- Aft bench seat
- Swim platform
- LED courtesy lights
- Forward line/ anchor locker
- Smartcraft speedo / tachometer
- Starboard windscreen
- Dinette seat configuration
- 4 berths
- Berth cushions / filler
- Cabin lights
- Opening port lights
- Cockpit shower
- Pilot seat with flip bolster & swivel
- Cockpit cushions
- Cabin table
- Galley with sink and tap
- Adjustable steering position
- 12v electrical socket
- Electric bilge pump
- Hydraulic steering
- Deck Hatch

SMART Pack

- Cockpit comfort pack - Cockpit sun lounge, Aft seat extension L-Lounge, Cockpit table
- Galley pack - LPG Stove, Refrigerator
- Forward sun lounger
- Aft seat with inclinable backrest
- Curtains
- Roof hatch
- Enclosed sea toilet
- Shorepower
- Bow electric windlass
- Electric trim tabs
- Cockpit flood light

- Flexiteek flooring
- Hull color grey
- Bow thruster



Contact

Yachts.co International Ltd

SWANSEA OFFICE

Address:

Network Yacht Brokers Swansea, Unit 1, Fishmarket Quay, Swansea, SA1 1UP

***Telephone:* 01792 465550**

***Email:* info@nybswansea.co.uk**

