



Suncruiser Suncruiser 34

YEAR 2006 | £49,950 | VAT PAID | SWANSEA OFFICE



Summary

Manufacturer: Suncruiser Suncruiser 34

Price: £49,950

Location: Swansea

Year: 2006

ID no.: 05462

DIMENSIONS

- **LOA:** 34' 0" (10.36m)
- **Beam:** 12' 2" (3.71m)
- **Draft:** 3' 0" (0.91m)
- **Keel:**

ACCOMMODATION

- **Berths:** 4
- **Cabins:** 0
- **Heads:** 1
- **Showers:** 1

PERFORMANCE

- **Top Speed:** 26
- **Cruising Speed:** 20

TANKAGE

- **Fuel:** Diesel
- **Fuel Tank Size:** 600
- **Water Tank Size:** 400 Litres

MACHINERY

- **Engine Make:** Volvo D130
- **Horsepower:** 130
- **Drive Type:** Sterndrive

OTHERS

- **Aircon:**
- **Heating:** Eberspacher



Suncruiser Suncruiser 34

Broker Remarks

We are pleased to offer to the market this Suncruiser 34 Sedan, in very condition with new canopies and fittings she is well maintained by her current owner and offers a spacious saloon, well proportioned berths and large cockpit, this family cruiser gets you out on the water in comfort and style.

Antifouled, and full polished April 2018

Leg Serviced oil change April 2018

First commissioned in 2006 this is a great opportunity to purchase one of these well built and economical cruisers, she has the Volvo D130's which provide all the power you will need whilst being economical at 20ltrs/hr at 9 knots cruising speed.

Part exchange considered.

Finance Available: from £399.49 pcm (30% deposit)



Accommodation

Forward Berth

Deck hatch
Flatscreen TV
Cupboard
Storage drawer
Opening porthole
Offset double berth
Lighting

Port Berth(s)

Large bunk bed
Opening porthole
Storage under floor
Lighting

Heads

Sea Toilet (Electric)
Full size seperate shower unit
Wooden countertop with sink
Storage cupboard
Lighting
Opening porthole

Mechanical and Rigging

Engines & Systems

Twin Volvo D130 (400 hours)

Fully serviced (May 2015)

4 x Batteries

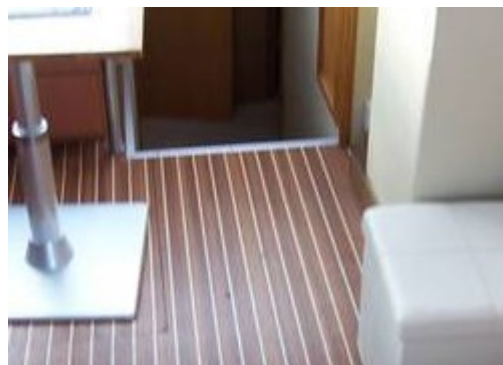
Large engine bay

Isolator switches

600L fuel tank

Bow Thruster

Volvo leg drives



Deck

Stainless steel rail
CQR Anchor, Chain & Warp
Anchor windlass
Fender & Warps
Dual transom access
Bench seat aft
Teak laid floor
Rod holders
Teak side rails
Full aft cockpit canopy (2014)

Saloon

L-Shaped seat converting to occasional berth
Large wood table
Shelving
Large storage area under saloon floor
Bench sofa seat to starboard
Lighting throughout

Galley

L-Shaped galley
2 burner gas hob
Oven
Fridge
Sink
Hot/Cold Water
Storage cupboards

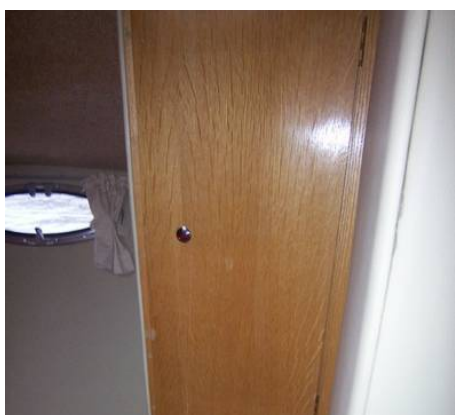
Helm

Bench seat
Engine gauges, tilt & trim control
Bow thruster
Simrad GPS/Radar
Simrad autopilot
Windlass control
Icom VHF/DSC Radio
Dual lever throttle controls
Nasa depth gauge
Compass
Electronics control panel
FM Radio

Misc & Safety

Eberspacher Heating system
Fire Extinguishers
Carpeted throughout
Wipers

Manual & Automatic bilge
Horseshoe lifebuoy



Contact

YACHTS.CO INTERNATIONAL LTD SWANSEA OFFICE

Address:

Network Yacht Brokers Swansea, Unit 1, Fishmarket Quay, Swansea, SA1 1UP

Telephone: 01792 465550

Email: info@nybswansea.co.uk

Disclaimer : Yachts.co International Ltd offers the details of this vessel for sale but cannot guarantee or warrant the accuracy of the information contained in the specification or warrant the condition of the vessel or equipment. A buyer should instruct his agents, or surveyors, to investigate such details as the buyer desires validated. This vessel is offered for sale subject to no prior sale, price change, or withdrawal without notice.

