



Jeanneau Sun Odyssey

YEAR 2001 | £29,995 | VAT PAID | LYMINGTON OFFICE



Summary

Manufacturer: Jeanneau Sun Odyssey

Price: £29,995

Location: Lymington

Year: 2001

ID no.: 04559

DIMENSIONS

- **LOA:** 31' 2" (9.50m)
- **Beam:** 9' 10" (3.00m)
- **Draft:** 4' 11" (1.49m)
- **Keel:** Fin Keel

ACCOMMODATION

- **Berths:** 6
- **Cabins:** 2
- **Heads:** 1
- **Showers:** 1

PERFORMANCE

- **Top Speed:**
- **Cruising Speed:**

TANKAGE

- **Fuel:** 0
- **Fuel Tank Size:** 45 Litres
- **Water Tank Size:** 140 Litres

MACHINERY

- **Engine Make:** Volvo Penta D-30
- **Horsepower:** 29
- **Drive Type:** Shaft drive

OTHERS

- **Aircon:**
- **Heating:** Webasto



Jeanneau Sun Odyssey

Broker Remarks

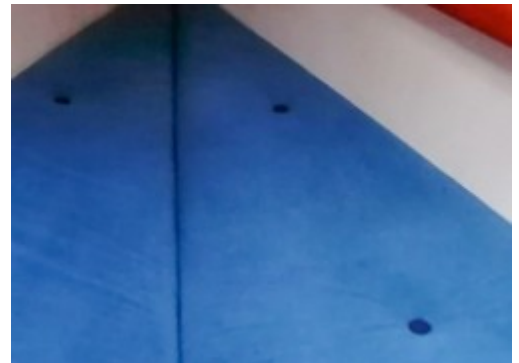
The Jeanneau Sun Odyssey 32.2 is a fast capable cruiser with a bright spacious interior. They are a joy to sail in light and heavy airs and will provide safe cruising around the UK coast and longer trips across the channel.

'Liberte' is well equipped for short handed sailing ,all lines lead back to the cockpit and she has a furling genoa as well as a autohelm.

Her inventory includes hot and cold water throughout and a Webasto hot air heating system. Her galley is well equipped with a refrigerator, Two burner hob with oven and dry storage. She has all the comforts to keep the most demanding crew very happy on extended cruises.

Her sails are in good condition as is the new Volvo D-30 29hp engine . She has a additional spinnaker and stay sail.

'Liberte' can be viewed 7 days a week afloat in Lymington ,Hampshire. Please call Howard Ross on 07590 847548 for more information and to arrange a viewing.



Accommodation

The Jeanneau Sun Odyssey 32.2 sleeps 6 . The forward cabin has twin berths with an in fill to make a double, there is a hanging locker and opening hatch. The saloon is spacious with a large folding table. The galley has a fridge, two burner oven, dry storage and stainless steel sink.

She has a good sized heads to aft starboard, with sea toilet and wet hanging space. The aft double cabin is large and has a hanging locker.

Mechanical and Rigging

Volvo penta D-30 29hp

Two bladed folding prop

3 x Batteries

Sterling battery charger

Shore power

Solar panel

Electric windlass

10kg Delta anchor 40m chain

Folding bathing ladder

Sprayhood

Westerways main

Westerways genoa with Facor Furler

Spinnaker

Spinnaker pole

Staysail

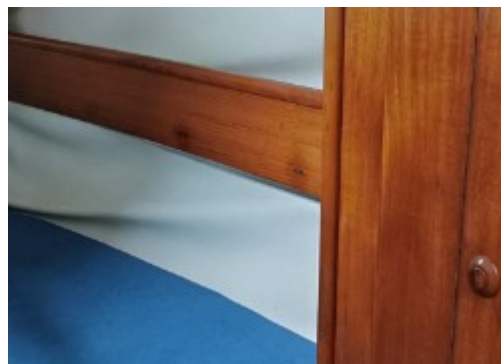
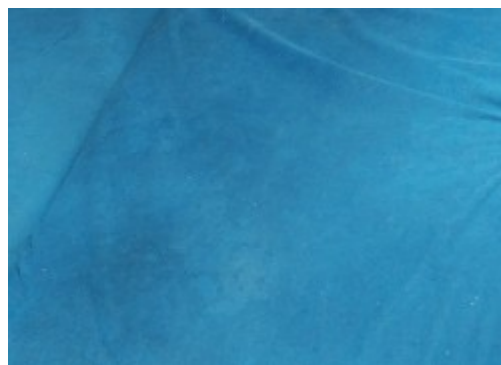
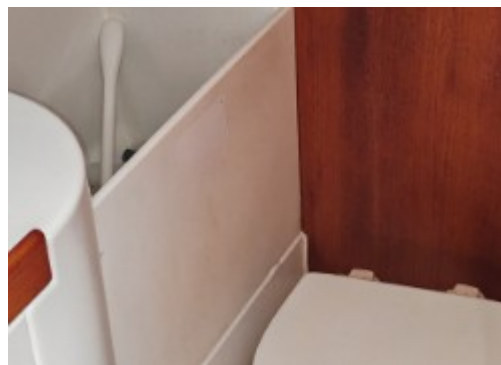
2 x Harken 32 winches

2 x Harken 16 winches

Sparcraft mast and boom

Barton boom strut

Warps and fenders



Pressurized hot and cold water system
Webasto hot air heating system
Garmin colour plotter with full AIS
Garmin 128 GPS
Simrad RD68 DSC/VHF
Raymarine ST60 Tri data
Raymarine ST 60 wind speed and direction
Autohelm ST4000 plus
Plastimo steering compass
Nasa Navtex

Contact

**BREEZE SPORTS LTD T/A NETWORK YACHT BROKERS
LYMINGTON**

LYMINGTON OFFICE

Address:

Howard Ross, Network Yacht Brokers Lymington, Marine House, Quay Road, Lymington, Hants, SO41 3AT

Telephone: 01590 671381

Email: lymington@networkyachtbrokers.co.uk

Disclaimer : Breeze Sports Ltd t/a Network Yacht Brokers Lymington offers the details of this vessel for sale but cannot guarantee or warrant the accuracy of the information contained in the specification or warrant the condition of the vessel or equipment. A buyer should instruct his agents, or surveyors, to investigate such details as the buyer desires validated. This vessel is offered for sale subject to no prior sale, price change, or withdrawal without notice.

