

Orkney Boats Pilot

YEAR 2018 | £28,499 | LYMINGTON OFFICE



Summary

Manufacturer: Orkney Boats Pilot

Price: £28,499

Location: lymington OFFICE

Year: 2018

ID no.: 04543

DIMENSIONS

- **LOA:** 20' 0" (6.10m)
- **Beam:** 7' 10" (2.40m)
- **Draft:** 1' 8" (0.5m)
- **Keel:** Deep V Planing

ACCOMMODATION

- **Berths:** 2
- **Cabins:** 1
- **Heads:** 0
- **Showers:** 0

PERFORMANCE

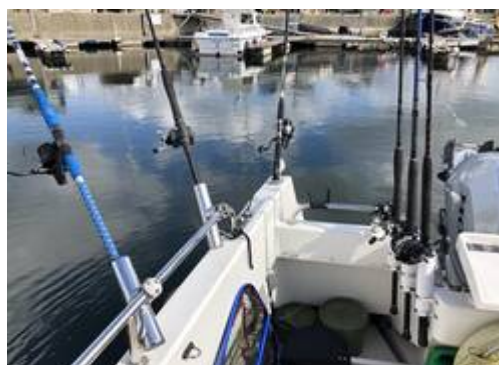
- **Top Speed:**
- **Cruising Speed:**

TANKAGE

- **Fuel:** Petrol
- **Fuel Tank Size:** 126 Litres
- **Water Tank Size:** 50 Litres

MACHINERY

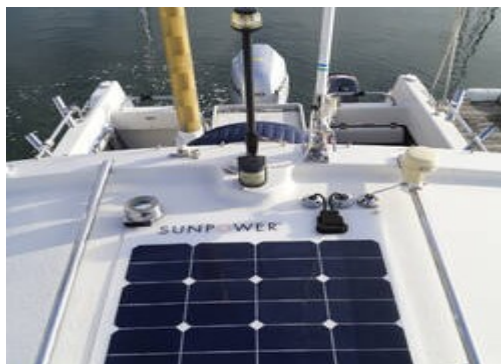
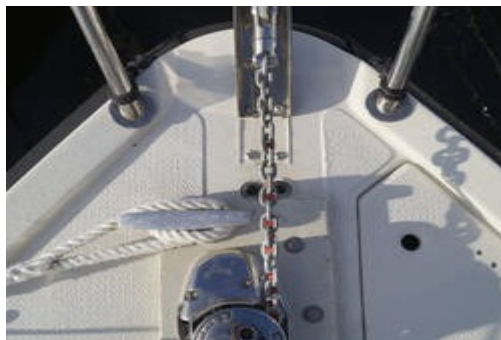
- **Engine Make:** Honda
- **Horsepower:** 80
- **Drive Type:** Outboard



Orkney Boats Pilot

Broker Remarks

This 2018 example of the ever popular Orkney Pilot House 20 is in great condition throughout, having being lightly used by her one owner from new. She is fully equipped for successful fishing adventures. Her powerful and smooth Honda 80 outboard has only 117 hours and has been regularly serviced. She also comes with a back up outboard . 'Top az' comes with full navigation instruments including a Garmin colour Chart plotter with a integrated fish finder. There is also a full AIS system, deck lights and full set of navigation lights. The cuddy cabin has two cushioned berths and a space for a portapotti. The galley area has a single burner stove. The cockpit is perfectly laid out for fishing with all the rod holder and storage you could ever ask for. The is a short cockpit awning for when the weather does not cooperate. Please call Howard Ross on 07590 847548 for more information and to arrange a viewing.



Accommodation

Two berths in cuddy cabin. Galley area with single burner stove.

Mechanical and Rigging

Honda 80hp 115 hours
 Mariner 4hp
 New stainless steel prop
 Lenco Trim tabs
 Stainless steel 126L integral fuel Tank
 50 w solar panel and battery conditioner
 Lewmar electric anchor windlass plus two anchors
 Self stowing anchor roller
 10m chain 100m warp
 Day Angler package
 Live bait tank with aerator pump
 Deck hose
 Electric bilge pump
 Stainless steel push-pit and multiple stainless hand rails
 on coach roof and in cockpit
 Stainless stanchions and guard wire
 Midship cleats
 Dual windscreen wipers
 Helm and navigators seating
 Navigation lights
 Opening helm windows
 Forward deck hatch
 Space for portapotti



Garmin chart plotter /echo sounder/Fish
finder
Full AIS
DSC/VHF
Hand held VHF
Electric and manual bilge pumps
Foghorn
Deck lights
Flare pack4 life jackets
Radar reflectors
Single burner stove
Fenders and warps
Short cockpit awning



Contact

**Breeze Sports Ltd t/a Network Yacht Brokers
Lymington**

LYMINGTON OFFICE

Address:

Howard Ross, Network Yacht Brokers Lymington, Marine House, Quay Road, Lymington, Hants,
SO41 3AT

***Telephone:* 01590 671381**

***Email:* lymington@networkyachtbrokers.co.uk**



NETWORK

ORKNEY BOATS PILOT

www.networkyachtbrokers.com

