

Cornish Shrimper 19

YEAR 2010 | £22,495 | LYMINGTON OFFICE



Summary

Manufacturer: Cornish Shrimper 19

Price: £22,495

Location: lymington OFFICE

Year: 2010

ID no.: 04496

DIMENSIONS

- **LOA:** 22' 6" (6.86m)
- **Beam:** 7' 2" (2.18m)
- **Draft:** 4' 0" (1.22m)
- **Keel:** Centerboard

ACCOMMODATION

- **Berths:** 4
- **Cabins:** 1
- **Heads:** 0
- **Showers:** 0

PERFORMANCE

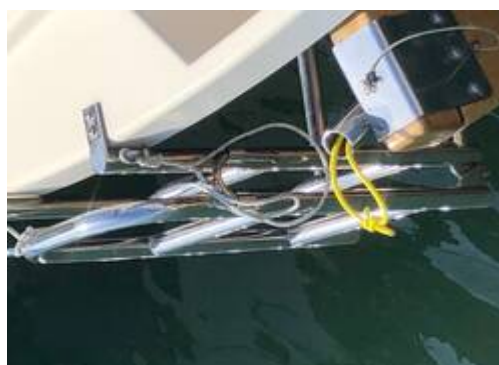
- **Top Speed:**
- **Cruising Speed:**

TANKAGE

- **Fuel:** Petrol
- **Fuel Tank Size:** 4 Gallons
- **Water Tank Size:** 20 Litres

MACHINERY

- **Engine Make:** Mariner
- **Horsepower:** 6
- **Drive Type:** Outboard



Cornish Shrimper 19

Broker Remarks

This Cornish Shrimper was built in 2010 and first launched in 2011. She has been immaculately looked after by her owners who have had her from new. Her top sides and interior are both in excellent condition. She is the outboard version and comes with a Mariner 6hp which has been regularly serviced and is in perfect running order. During the build, her owners had the inboard housing locker lowered so the hatch is at the level of the cockpit floor this means she has a much larger cockpit than normal and a huge locker underneath. Her sails are the traditional tan colour and are in very good condition. The bowsprit is the cantilever type and makes raising and lowering the mast very easy. Her hull has been copper coated so no messy antifouling every year. The Shrimper 19 has a draft of 1.22m but with the keel up it is .46m which means she can go almost anywhere there is water. She can also easily take the ground. This Cornish Shrimper 19 comes with a fully roadworthy trailer which has never been used to launch the boat, so is in great condition. She is afloat in Lymington and can be viewed 7 days a week.

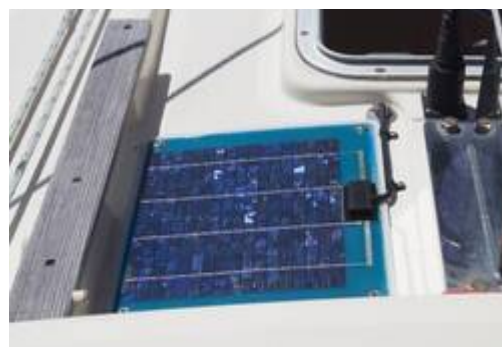


Accommodation

The Shrimper 19 has four berths. Her upholstery is all in very condition and she comes with a gimbaled single burner gas stove.
She has plenty of locker space.

Mechanical and Rigging

Mariner 6 regularly serviced
 Remote fuel tank
 Copper coated
 Main (Tan) with cover
 Sailspar continuous line roller reefing jib
 Harken winch
 Spinlock clutches
 1 x Battery
 Solar panel
 VHF with DSC IC - M411
 Raymarine ST40 Echo Sounder
 Mast head aerial
 Masthead navigation lights
 Wind indicator
 Plough anchor 4m chain and 30m warp
 Tilt-back trailer fully roadworthy with flushing brake system
 Lifting bowsprit to assist in lowering and raising the mast



Removable teak finish table with cabin and
cockpit mounts
Gimballed single burner stove
All over winter cover
Summer boom tent
Warps and fenders
Compass Silva hand held



Contact

Breeze Sports Ltd t/a Network Yacht Brokers
Lymington

LYMINGTON OFFICE

Address:

Howard Ross, Network Yacht Brokers Lymington, Marine House, Quay Road, Lymington, Hants,
SO41 3AT

***Telephone:* 01590 671381**

***Email:* lymington@networkyachtbrokers.co.uk**

