

# Rival Rival 36

**YEAR 1990   |   £49,995   |   LYMINGTON OFFICE**



## Summary

**Manufacturer:** Rival Rival 36

**Price:** £49,995

**Location:** lymington OFFICE

**Year:** 1990

**ID no.:** 04412

### DIMENSIONS

- **LOA:** 35' 10" (10.92m)
- **Beam:** 10' 11" (3.33m)
- **Draft:** 4' 11" (1.5m)
- **Keel:** Fin keel

### ACCOMMODATION

- **Berths:** 5
- **Cabins:** 2
- **Heads:** 1
- **Showers:** 1

### PERFORMANCE

- **Top Speed:**
- **Cruising Speed:**

### TANKAGE

- **Fuel:** Diesel
- **Fuel Tank Size:** 0
- **Water Tank Size:** 200

### MACHINERY

- **Engine Make:** Bukh
- **Horsepower:** 36
- **Drive Type:** Shaft drive





# Rival Rival 36

## Broker Remarks

This Rival 36 for sale in Lymington has been lightly used and is in very good condition. Built by Southern Yachts, she is a high-quality yacht with the ability to make comfortable safe. 'Topaz's' hull was laid down in 1990 but Rossiter's boat yard in Christchurch fitted her out and launched her in 1996. Her sails and engine have been regularly serviced. She is easily sailed either single or short handed as she has a ST 4000 autohelm, Inmast reefing, and all lines lead back to the cockpit. She is set up for comfortable cruising. Topaz has shore power and pressurized hot water, there is a shower in the heads, the galley has a fridge, oven, grill and two burners. The Rival 36 has ample storage throughout. This is a go anywhere cruiser and is available for viewing in Lymington, Hampshire.



## Accommodation

The Rival 36 has a quality teak finished interior which is in very good condition, as is the upholstery throughout. She sleeps 5. The forward main cabin has a en-suite facility, a twin berth with a fill-in to make up a double, and storage around the hull.

The saloon has two settee berths with under seat storage. The dinning table folds and is very large. The galley has hot water, twin sinks, oven ,grill and two burners. There is an Isotherm fridge unit.

The heads has a hot water shower stainless steel sink, and mirror.

## Mechanical and Rigging

Bukh 36

Shore power

Hot and cold pressurized water

Main

Genoa

Spinnaker

Spinnaker pole

Furler roller reefing

In-mast reefing

All lines lead back to the cockpit

Stainless steel pulpit and pushpit

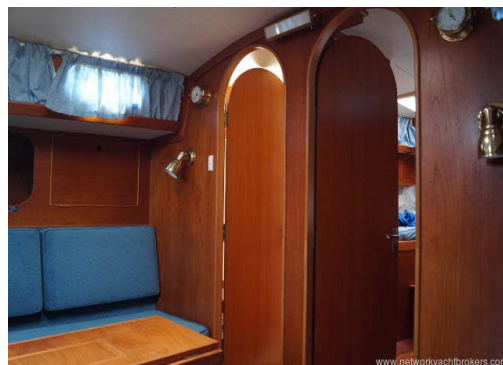
Teak toe rail

Side gates port and starboard

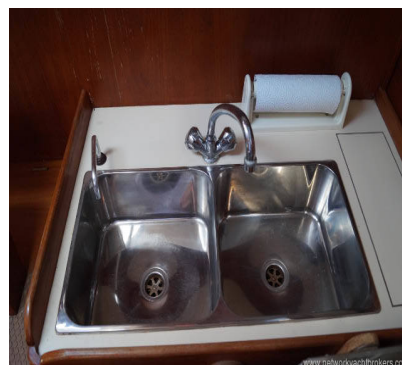
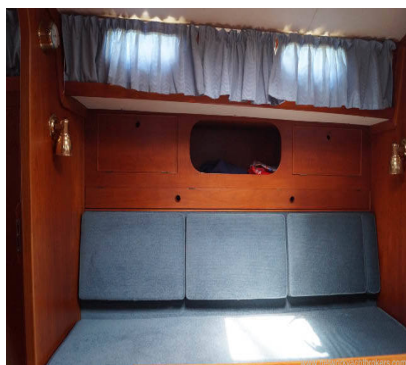
6 Lewmar winches

Folding boarding ladder on stern

Electric bilge



Shore power  
St 4000 Autohelm  
Radar  
Radar reflector  
VHF radio  
Shipmate GPS RS 5700  
Speed /log depth  
Isotherm fridge  
Oven ,grill,two burners  
Binnacle steering compass  
Solar panel battery charger





# Contact

**Breeze Sports Ltd t/a Network Yacht Brokers  
Lymington**

## **LYMINGTON OFFICE**

***Address:***

Howard Ross, Network Yacht Brokers Lymington, Marine House, Quay Road, Lymington, Hants,  
SO41 3AT

***Telephone:* 01590 671381**

***Email:* [lymington@networkyachtbrokers.co.uk](mailto:lymington@networkyachtbrokers.co.uk)**



