



# Moody Moody 31

**YEAR 1986 | £29,990 | VAT PAID | LYMINGTON OFFICE**



# Summary

**Manufacturer:** Moody Moody 31

**Price:** £29,990

**Location:** Lymington

**Year:** 1986

**ID no.:** 04408

## DIMENSIONS

- **LOA:** 30' 9" (9.37m)
- **Beam:** 10' 6" (3.20m)
- **Draft:**
- **Keel:** Bilge Keel

## ACCOMMODATION

- **Berths:** 6
- **Cabins:** 2
- **Heads:** 1
- **Showers:** 1

## PERFORMANCE

- **Top Speed:**
- **Cruising Speed:**

## TANKAGE

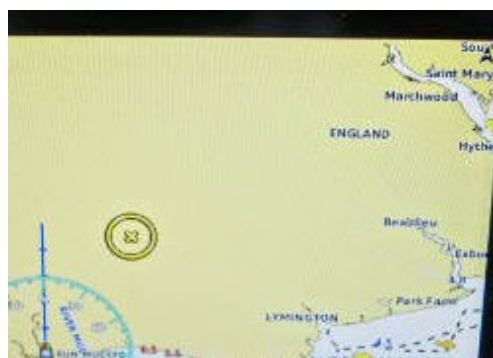
- **Fuel:** 0
- **Fuel Tank Size:** 91 Litres
- **Water Tank Size:** 136 Litres

## MACHINERY

- **Engine Make:** Volvo 2003
- **Horsepower:** 28
- **Drive Type:** Shaft drive

## OTHERS

- **Aircon:**
- **Heating:**



# Moody Moody 31

## Broker Remarks

'Pearl' is a very good example of the popular Moody 31 MK11 with bilge keels. She sleeps 6 in two cabins including the saloon which is light and bright with excellent wood fittings. She has shore power, a hot water system, a great galley with fridge, a large heads and a full cockpit tent everything necessary to keep the most demanding crew happy on extended cruises.

She is very easily sailed single or short handed having in-mast reefing, roller genoa and a Raymarine ST 2000 autohelm.

Her cockpit is deep and dry and the Mark 11 has a sugar scoop with folding boarding/swimming ladder.

She has a full array of modern navigation equipment including radar, AIS (receiving) colour plotter and DSC VHF radio

She is powered by a freshwater cooled Volvo 2003 which has been well cared for.

She is currently ashore for viewing.

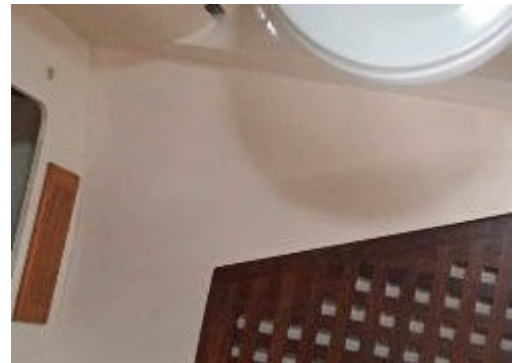


## Accommodation

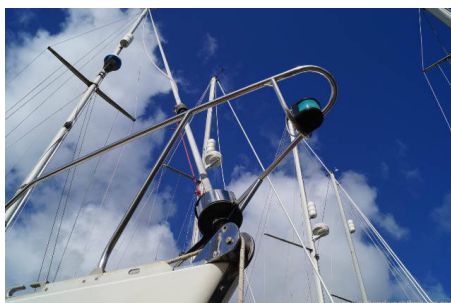
The Moody 31 MK2 offers good cruising accommodation and sleeps six. The forward cabin has twin berths with a fill in to make a double. There is a hanging cupboard and storage. She has good head height in the saloon two berths and a large folding dinning table. Her interior has very nice wood fittings which are in good condition. The galley has a stainless steel sink with hot water. There is a fridge and oven with grill and two burners in excellent condition. The heads are a good size with Jabsco heads. The sink has a shower attachment and hot water. There is a vanity unit and a wet locker. The rear cabin is a full double berth with hatches and hanging storage.

## Mechanical and Rigging

28hp Volvo fresh water cooled. Full head service 2018 Volvo MS2B gearbox with drive shaft mod 2015 New Dripless PSS shaft seal 2016 New P bracket and cutlass bearing 2016 New shaft 2016 New exhaust elbow 2016 Two bladed prop Ambassador rope cutter Main winches two Lewmar 40 self-tailing Manual bilge pump Shore power 3 x batteries (switched engine start and domestic cct) Waeco intelligent battery management system Nasa BM-1 battery monitor 'Mainreef' in-mast furling main Hood roller reefing Spare genoa Whisker pole Cruising chute Spare Standard rig mainsail Masthead LED tri-colour/anchor lighth Anchor chain and warp Manual anchor windlass Fenders and warps Stainless steel pulpit and pushpit, guardrails. Sprayhood Spray dodgers Folding boarding ladder Tiller extension



Presurized hot and cold water (calorifier)  
Shore power Full cockpit tent Neptune 4500  
oven, grill, two burners Refrigerator ST2000  
auto-tiller pilot Garmin EchoMap 75S chart  
plotter integrated with digital cockpit repeat  
position, course, track, and distance Standard  
Horizon DSC VHF with AIS receive VHF and  
AIS repeater in cockpit Navtex New Plastimo  
cockpit steering compass new 2017 Furuno  
radar Windspeed instrument Depth and log



# Contact

**BREEZE SPORTS LTD T/A NETWORK YACHT BROKERS  
LYMINGTON**

**LYMINGTON OFFICE**

***Address:***

Howard Ross, Network Yacht Brokers Lymington, Marine House, Quay Road, Lymington, Hants, SO41 3AT

***Telephone:*** 01590 671381

***Email:*** [lymington@networkyachtbrokers.co.uk](mailto:lymington@networkyachtbrokers.co.uk)

Disclaimer : Breeze Sports Ltd t/a Network Yacht Brokers Lymington offers the details of this vessel for sale but cannot guarantee or warrant the accuracy of the information contained in the specification or warrant the condition of the vessel or equipment. A buyer should instruct his agents, or surveyors, to investigate such details as the buyer desires validated. This vessel is offered for sale subject to no prior sale, price change, or withdrawal without notice.

