

Etap Etap 21i

YEAR 2000 | £10,999 | LYMINGTON OFFICE



Summary

Manufacturer: Etap Etap 21i

Price: £10,999

Location: lymington OFFICE

Year: 2000

ID no.: 04397

DIMENSIONS

- **LOA:** 21' 6" (6.55m)
- **Beam:** 8' 2" (2.49m)
- **Draft:** 2' 11" (0.89m)
- **Keel:** Shoal keel

ACCOMMODATION

- **Berths:** 4
- **Cabins:** 1
- **Heads:** 0
- **Showers:** 0

PERFORMANCE

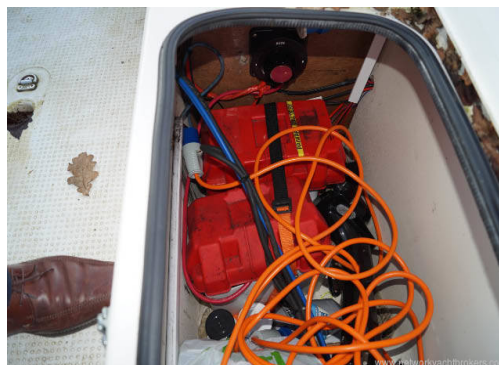
- **Top Speed:**
- **Cruising Speed:**

TANKAGE

- **Fuel:** Petrol 4-stroke
- **Fuel Tank Size:** 25 Litres
- **Water Tank Size:** 0

MACHINERY

- **Engine Make:** Honda
- **Horsepower:** 10
- **Drive Type:**



Etap Etap 21i

Broker Remarks

A very fine example of the unsinkable Etap 21i trailer sailer for sale in Lymington. 'Meerkat' is in very good condition throughout and has been lightly use. She is powered by a Honda 10 hp engine with electric start and power generator. The Etap 21 i sleeps 4 . There are two side by side berths and up forward a twin berth with a fill in to make up a double. The galley area has a two burner stove ,stainless steel sink and storage.The cockpit is large and all lines lead back to it. The Etap 21 i is a capable club racer and proper coastal passage maker.She is double skinned that makes her unsinkable and also makes her cabin quite and reduces condensation.She comes with a colour chart plotter and autohelm.The Etap 21i sails better and has a far higher build quality than the Jeanneau 2000 or Beneteau 211.



Accommodation

The Etap 21 i sleeps four with two side berths and either a twin vv forward berth which can be fillin in to make a double.

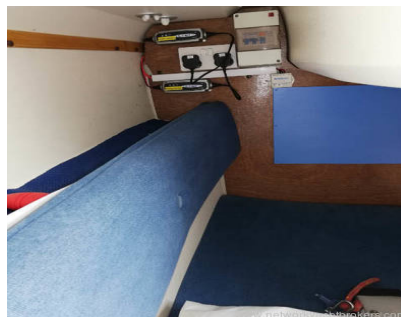
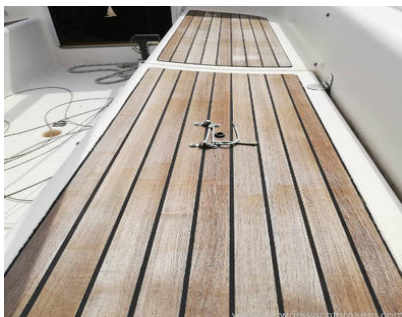
She has a dining table and a sink and two burner stove.

Mechanical and Rigging

Honda 10hp
2 x batteries
Electric start
Engine charger
Four winches
Full navigation lights
Stainless steel pushpit
Stainless steel pulpit
Stainless steel anchor storage
Anchor chain and warp
Radar reflector
Folding stainless steel ladder on stern
Stainless steel Tabernacle
Main
Genoa



ST 1000+ Autohelm
Garmin GPS Map 192 plotter
Cobra DSC/VHF
Two burner stove
Warps & fenders



Contact

**Breeze Sports Ltd t/a Network Yacht Brokers
Lymington**

LYMINGTON OFFICE

Address:

Howard Ross, Network Yacht Brokers Lymington, Marine House, Quay Road, Lymington, Hants,
SO41 3AT

***Telephone:* 01590 671381**

***Email:* lymington@networkyachtbrokers.co.uk**



NETWORK

ETAP ETAP 21I TRAILER

www.networkyachtbrokers.com

