



Cranchi Cranchi Giada

YEAR 1997 | £27,950 | VAT PAID | LYMINGTON OFFICE



Summary

Manufacturer: Cranchi Cranchi Giada

Price: £27,950

Location: Lymington

Year: 1997

ID no.: 04387

DIMENSIONS

- **LOA:** 29' 2" (8.88m)
- **Beam:** 10' 8" (3.26m)
- **Draft:** 2' 0" (0.61m)
- **Keel:** Planing

ACCOMMODATION

- **Berths:** 5
- **Cabins:** 0
- **Heads:** 1
- **Showers:** 0

PERFORMANCE

- **Top Speed:**
- **Cruising Speed:**

TANKAGE

- **Fuel:** 0
- **Fuel Tank Size:** 380 Litres
- **Water Tank Size:** 110 Litres

MACHINERY

- **Engine Make:** Volvo AD31P DPE
- **Horsepower:** 300hp
- **Drive Type:**

OTHERS

- **Aircon:**
- **Heating:**



Cranchi Cranchi Giada

Broker Remarks

She makes a comfortable weekender and is suitable for more extended cruising. She has a large aft cabin with large double berth with two opening port holes, a hanging wardrobe, a small cushioned seat and reading lights.

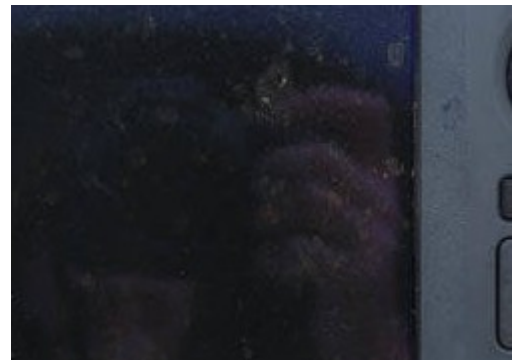
Her heads compartment has a sea toilet, hot and cold shower and window.

The saloon dinning table converts when needed into a large double berth. The helm position has full instrumentation and both a GPS chart plotter and fish finder.

For entertainment she has a Sony sound system and TV with DVD player.

Her out drives have recently been off and refurbished.

The Cranchi Giada 30 is a well built, stylish motor cruiser easily handled and perfect for having fun on the water. The owners will consider offers on the listed price.



Accommodation

The Cranchi Giada 30 sleeps 4 in comfort. Two in a large rear cabin which has a seat and hanging locker and the saloon converts into a double.

The galley has a refrigerator ,twin gas burners and a stainless steel sink and dry storage

Mechanical and Rigging

Twin Volvo AD31P DPE 150hp each

Duoprops

Power steering

Hydraulic trim tabs

Full instrumentation at helm including gauges for Oil pressure, voltmeter, water temperature, rev counter, trim indicator, fuel also at the helm nav lights, 12v socket, document holder and all instruments are lighted.

Bathing platform

Folding boarding ladder

Cockpit shower

Removable bow extension

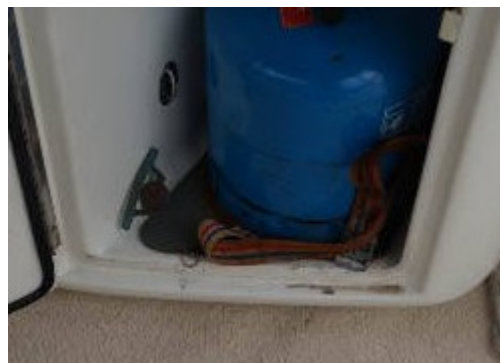
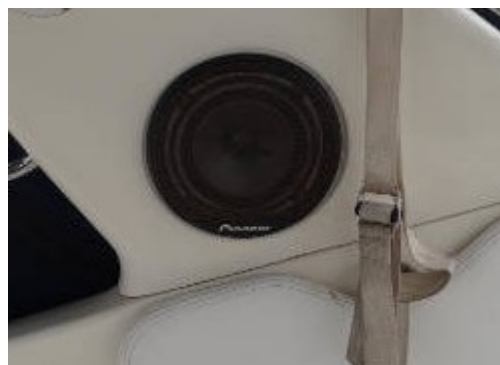
Electric windlass

Anchor chain and warp

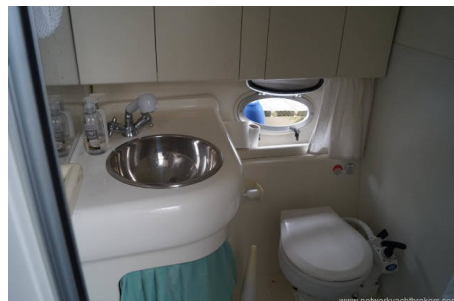
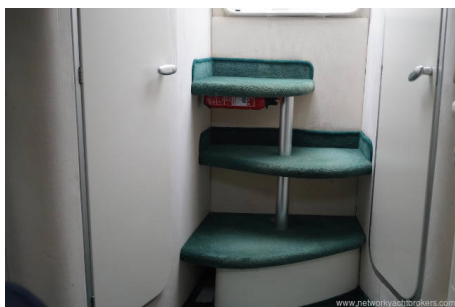
Engine compartment blower

Electrical bilge pump

New cockpit tent 2015



Full cockpit canopy new 2015
Tonneau cover
Stereo radio/cd
Sharp Microwave oven
Immersion heater
Besenzoni telescopic davits
Lowrance Elite 5m chartplotter
Lowrance Elite 5x HDI fishfinder.



Contact

BREEZE SPORTS LTD T/A NETWORK YACHT BROKERS
LYMINGTON

LYMINGTON OFFICE

Address:

Howard Ross, Network Yacht Brokers Lymington, Marine House, Quay Road, Lymington, Hants, SO41 3AT

Telephone: 01590 671381

Email: lymington@networkyachtbrokers.co.uk

Disclaimer : Breeze Sports Ltd t/a Network Yacht Brokers Lymington offers the details of this vessel for sale but cannot guarantee or warrant the accuracy of the information contained in the specification or warrant the condition of the vessel or equipment. A buyer should instruct his agents, or surveyors, to investigate such details as the buyer desires validated. This vessel is offered for sale subject to no prior sale, price change, or withdrawal without notice.

