

Rossiter Pintail 27

YEAR 1974 | £11,995 | LYMINGTON OFFICE



Summary

Manufacturer: Rossiter Pintail 27

Price: £11,995

Location: lymington OFFICE

Year: 1974

ID no.: 04347

DIMENSIONS

- **LOA:** 27' 0" (8.23m)
- **Beam:** 8' 9" (2.67m)
- **Draft:** 3' 6" (1.07m)
- **Keel:**

ACCOMMODATION

- **Berths:** 4
- **Cabins:** 2
- **Heads:** 1
- **Showers:** 0

PERFORMANCE

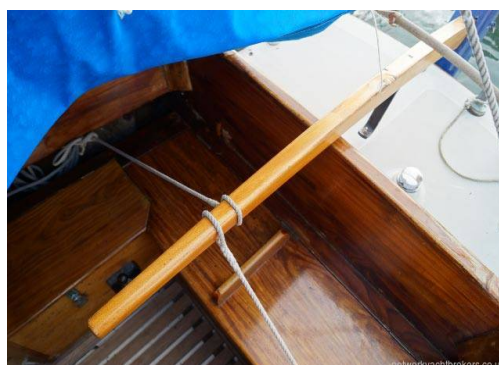
- **Top Speed:**
- **Cruising Speed:**

TANKAGE

- **Fuel:** Diesel
- **Fuel Tank Size:** 14 Gallons
- **Water Tank Size:** 30 Gallons

MACHINERY

- **Engine Make:** Beta 25
- **Horsepower:** 25
- **Drive Type:** Shaft drive



Rossiter Pintail 27

Broker Remarks

The Rossiter Pintail has won a great reputation for being a safe, sturdy, shallow draft cruiser and with traditional looks and high build quality. She has excellent quality joinery which gives her a warm quality feel throughout. She had a new Beta 25 engine installed in 2015 and a new prop in 2016. Roamer has shore power fitted with an intelligent battery charger system. She sleeps four, has a comfortable deep cockpit and a folding dining table in the saloon. She has ample storage for extended cruising and her shallow draft triple keel allows her to take the ground and explore the shallowest of anchorages. The Pintail's are built by the famous Rossitors yard of Christchurch. Anyone looking for a capable traditional cruising yacht with bags of character she view this at, which is afloat in Lymington and can be viewed 7 days a week.



Accommodation

The Rossiter Pintail sleeps 4, the foreward cabin has a twin v berth and the saloon has full length settee berths. She has a separate heads cabin with a sink. The galley has a two burner stove ,cool box and dry storage. There is good head height throughout and the use of quality joinery gives her a quality warm feel.

Mechanical and Rigging

Built to Lloyds Class +100A1

Beta 25 Engine New in 2015

3 Bladed prop New in 2016

Encapsulated lead keel

Afrormosia topstrakes, toerails, hatches, and rails

Sparlight mast ,Solid spruce boom

Inmast reefing

Colnebrook roller reefing on genoa

Main sail

Genoa

Storm sail

2 x spinnaker poles

Stainless steel fuel tank

Shore power

2 x Batteries

Adverc battery management system

Tricolour at mast head

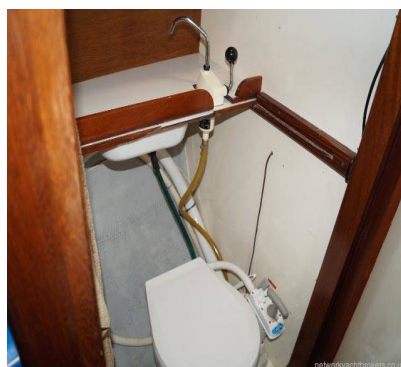
2 bilge pumps

2 Lewmar winches

2 Gibb Halyard winches



Garmin GPS
Navtex
Echo sounder- Autonnac AR130
USF 11 Solar panel
35lbs CQR anchor
25 lbs kedge anchor
Compass
Navco tiller pilot
Fire blanket
Boarding ladder
Cool box
Radar reflector
Brass clock / barometer
Warps and fenders
Cabin heater



Contact

Breeze Sports Ltd t/a Network Yacht Brokers
Lymington

LYMINGTON OFFICE

Address:

Howard Ross, Network Yacht Brokers Lymington, Marine House, Quay Road, Lymington, Hants,
SO41 3AT

***Telephone:* 01590 671381**

***Email:* lymington@networkyachtbrokers.co.uk**

