

Elan Marine 30



YEAR 2015 | £139,950 | VAT PAID | CHICHESTER OFFICE



Summary

Manufacturer: Elan Marine 30

Price: £139,950

Location: Chichester

Year: 2015

ID no.: 03960

DIMENSIONS

- **LOA:** 31' 8" (9.66m)
- **Beam:** 11' 5" (3.47m)
- **Draft:** 3' 2" (0.97m)
- **Keel:**

ACCOMMODATION

- **Berths:** 4
- **Cabins:** 2
- **Heads:** 1
- **Showers:** 1

PERFORMANCE

- **Top Speed:** 33 approx.
- **Cruising Speed:** 25 approx.

TANKAGE

- **Fuel:** Diesel
- **Fuel Tank Size:** 500 Litres
- **Water Tank Size:** 200 Litres

MACHINERY

- **Engine Make:** Volvo Penta D3
- **Horsepower:** 440
- **Drive Type:** Sterndrive

OTHERS

- **Aircon:**
- **Heating:** Webasto



Elan Marine 30

Broker Remarks

With sparkling performance from the twin Volvo D3 220hp engines plus a remarkable and very clever double cabin layout, the Elan Power 30 is a true sports cruiser.

This example has 180 hours run and is extremely well equipped with full Raymarine electronics including radar, bowthruster, heating throughout with an extra cockpit outlet plus much more.

Described in a recent MBY review as 'an excellent set up for a family who want to spend more time on the water together' and going on to say 'The driving experience is fun and enjoyable but you can also shut the roof, slow down a touch and the mature Castro hull will get you home even if it really turns nasty'.

Overall, the Elan Power 30 is an excellent combination of fresh thinking, good looks, performance and value.



Accommodation

Sleeps up to four in two double cabins

The forward cabin offers a very spacious layout and boasts a comfortable double berth with plenty of storage; the cabin feels light and airy due to the use of bright upholstery fabrics and the skylight above.

Access to the heads is gained via the door from the forward cabin.

The second cabin offers a double berth and boasts a bright and clever layout with excellent storage.

Heads compartment benefits from an electric flush toilet connected to holding tank, sink with mixer tap (pull out shower head) and ample storage; the toilet can be accessed via the saloon and the forward cabin.

The saloon with overhead skylights, pale oak carpentry and light fabrics create a feeling of space and light. Here you will find overhead lockers and a dinette with folding table which faces the galley.

The galley is split in two with a separate induction hob, fridge and plenty of storage one side and a stainless steel sink with mixer tap on the other; plenty of storage below.

Cockpit offers a central helm position giving you a great panoramic view; a double bench seat with a chart table to starboard; sliding roof above the helm position. To the rear you find a large seating area to starboard with a fold out table and bar area/seating to port and a wetbar with sink, mixer tap and Kerrock top surface. Door to bathing platform with steps to the side decks.

Webasto heating throughout

Mechanical and Rigging

ENGINES:

Twin Volvo Penta D3 220hp Diesel engines, to outdrives

Engine hours: 180 approximately

Max speed approx: 33 knots

Cruising speed approx: 25 knots

Trim tabs with LED indicators

Bowthruster

Full engine/leg service along with bellow change, antifoul and new anodes July 2019

ELECTRICS

Victron Battery Charger

240v Shore power

TANKAGE

Fuel capacity 1 x 500 litres

Fresh water capacity 1 x 200 litres



NAVIGATION AIDS

Steering compass
Raymarine i50 tridata (log, speed & depth)
Raymarine p70r autopilot
Raymarine C125 chartplotter
AIS receiver
Raymarine digital radar
Raymarine Ray260 DSC VHF
Rudder reference indicator
Navigation lights

GROUND TACKLE

Anchor with chain and warp
Electric anchor windlass

GENERAL EQUIPMENT

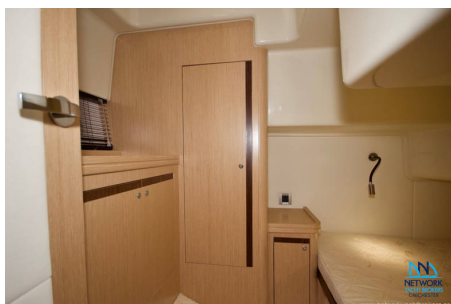
Bilge pump
Water heater
H&C Water System
Webasto heating
Electric toilet connected to holding tank
Pioneer mixtrax CD Player
Artex flatscreen television to saloon

BUILD

ELAN POWER 30 BUILT IN 2015
Built to the design of Tony Castro

CONSTRUCTION

White GRP hull, deck and superstructures
Electric blue vinyl wrap to topsides
Teak laid cockpit
Teak laid bathing platform



Contact

BLACKROCK YACHTING LIMITED T/A NETWORK YACHT BROKERS CHICHESTER CHICHESTER OFFICE

Address:

Network Yacht Brokers Chichester Unit D3 Chichester Marina Chichester PO20 7EJ

Telephone: 01243 550042

Email: chichester@networkyachtbrokers.co.uk

Disclaimer : Blackrock Yachting Limited t/a Network Yacht Brokers Chichester offers the details of this vessel for sale but cannot guarantee or warrant the accuracy of the information contained in the specification or warrant the condition of the vessel or equipment. A buyer should instruct his agents, or surveyors, to investigate such details as the buyer desires validated. This vessel is offered for sale subject to no prior sale, price change, or withdrawal without notice.

