

# Nicholson 32 Mk

**YEAR 1964   |   £22,000   |   CHICHESTER OFFICE**



## Summary

**Manufacturer:** Nicholson 32 Mk

**Price:** £22,000

**Location:** Chichester OFFICE

**Year:** 1964

**ID no.:** 03181

### DIMENSIONS

- **LOA:** 32' " (9.76m)
- **Beam:** 9' 3" (2.82m)
- **Draft:**
- **Keel:** Long

### ACCOMMODATION

- **Berths:** 5
- **Cabins:** 0
- **Heads:** 0
- **Showers:** 0

### PERFORMANCE

- **Top Speed:**
- **Cruising Speed:**

### TANKAGE

- **Fuel:** Diesel
- **Fuel Tank Size:** 0
- **Water Tank Size:** 0

### MACHINERY

- **Engine Make:** Bukh DV24 ME 1992
- **Horsepower:**
- **Drive Type:**



# Nicholson 32 Mk

## Broker Remarks

A lovely example of this classic heavyweight long-keeled cruiser from the drawing board of Peter and Charles Nicholson. Nicholson 32s have a well-deserved reputation for good sea-keeping ability. They are well-balanced and easy to sail. Morning Sky has been owned by her current owner for 4 years. Her previous owner carefully maintained and improved her for 35 years. Morning Sky has been laid up ashore each winter. With her increased storage space she is well set up for long distance cruising.



## Accommodation

5 berths in 2 cabins. Baby Blake WC installed with easy-access stopcock. Removed and stripped every winter. New wash basin and teak surround fitted (2005). New Whale pump installed in heads compartment (2005). Taylors twin burner + grill paraffin stove. Force 10 paraffin cabin heater. Stainless steel sink and ice-box. Much additional stowage. Several fiddles and grab pole fitted in galley. Saloon table with removable fiddles. Red vinyl upholstery.



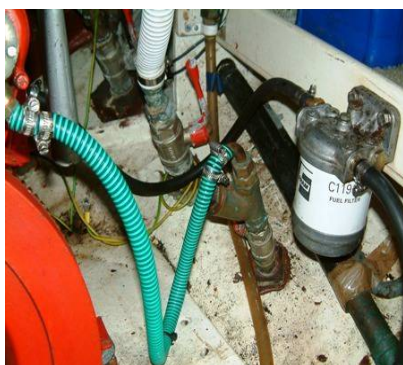
## Mechanical and Rigging

White GRP hull, pale grey decks. Tiller steering and spare tiller. Varnished bright work. New Vetus fore hatch with teak surround (2005). Hull gel coat peeled and blasted, then coated with West Epoxy + International Gelshield pre-coat, with Toplac to topsides (2005). Deck painted in 2008 with Blakes MultiCoat - pale grey, with non-slip surface on non-slip patterning. Cockpit locker tops and cockpit coaming in teak or afromosia (repaired 2007). Six additional cleats fitted to cockpit coaming; aft fairleads refastened and strengthened. Interior wood surfaces are all finished in a satin varnish, except for the cabin sole. Saloon locker covers below berths replaced. Aluminium framed windows. Bukh DV24 ME engine (fitted 1992) - professionally maintained. Self-lubricating stern tube (2001); Cooling water anti-siphon fitting. Spurs rope cutter on prop shaft. Fuel tank capacity: 13 Gallons. Water tank capacity: approx. 40 gallons. The GRP water tank was repainted in 2007 with SP Systems SP106 paint and International Water Tank black paint. 2 x batteries (new 2008). In-mast furling mainsail with Rotostay furling genoa system. Aluminium mast and boom. Spinnaker pole and gear; Jockey pole. New standing rigging (2005). New furling mainsail by Richardson Sails (2008). Genoa; No1 Jib; Ghoster; Storm Jib; Trysail; Spinnaker.



ICOM M601 VHF/DSC radio, with remote control hand-mike (+ cockpit mounting); Furuno GP 32 GPS with NASA repeater display in cockpit; Furuno Navtex NX300. Silva bulkhead compass; Hand-bearing compass; Original Sestrel compass and light. Autohelm 2000. Raymarine Tri-data display (speed and depth). Original B&G Log has been refurbished and is also available. Clocks and barometer. Charts and pilot books. ACR Sat 2 EPIRB (2007). Lewmar ST40 self-tailing winches x 2 for genoa and spinnaker. Two original bronze winches. Plough anchor (56lb); Bruce anchor (22 lb); Fishermans anchor (22 lb); 5/16 galvanized chain; 20lb Angel and chum; SL Anchorman windlass. Firdell radar reflector on mast; offshore Dan Buoy and light (2005); Plastimo Cruiser ORC 6-man life-raft in canister (2006); 2 x horseshoe life buoys; MOB throw line MOB recovery equipment; 2 x strobe light armbands; 2 x secure points in cockpit for lifelines; new webbing jackstays. Canvas spray hood (new 2008); spray dodgers; cockpit cushions; flax winter cover. 2 x boat hooks; warps and fenders; pile plank; water hose; bosun's chair; mooring line snubbers; beaching legs (oak); and boarding ladder. Henderson Mk V Chimp bilge pump (cockpit), with a second manual bilge pump mounted inside. Electric dinghy inflator; tools; first aid kit; pots & pans; 3 x fire extinguishers; fire blanket; 2x fog horns. Spare tiller. Portable 12v electric coolbox; Cockpit table. Set of coding flags, assorted ensigns and courtesy flags. Available separately: Lodestar inflatable dinghy and 3.5hp Tohatsu outboard (2007).





# Contact

**Blackrock Yachting Limited t/a Network Yacht  
Brokers Chichester**

## **CHICHESTER OFFICE**

***Address:***

Network Yacht Brokers Chichester Unit D3 Chichester Marina Chichester PO20 7EJ

***Telephone:* 01243 550042**

***Email:* [chichester@networkyachtbrokers.co.uk](mailto:chichester@networkyachtbrokers.co.uk)**



